



Stock No. 26273

U.S. PUBLIC LAND SURVEY MONUMENT RECORD

Index No. P-21

State of Wisconsin

County of Oneida

ss.

I, William B. Cochran, do hereby certify that on the 26th day of June, 19 89, I found evidence of the West Quarter corner of Section 24 Township 38 North, Range 11 East, Fourth Principal Meridian, as described hereon; and that from this evidence I established a new monument and accessories as described hereon to perpetuate the original location of this corner.

Resident witnesses:

History of original corner establishment: Dependent Resurvey in 1941 by Hugh B. Crawford. North between Sections 23 and 24, at 40.30 1/2 chains proportionate distance, set a concrete monument, 24 inches long, 6 inches in diameter, with a brass cap marked; 1/4, S23, S24, 1941. From which the following bear:

Poplar	6"	N60°30'E	12 1/2 links
Jack Pine	8"	S17°00'W	70 links

Description of corner evidence found:

Found monument as described and in place, from which the following bear;

Jack Pine (Stump)	S17°00'W	46.20 feet
-------------------	----------	------------

Description of monument and accessories I established to perpetuate the original location of this corner.

Blazed and scribed a new bearing tree;

Balsam	7"	N10°E	144.76 feet
--------	----	-------	-------------

No other bearing trees available.

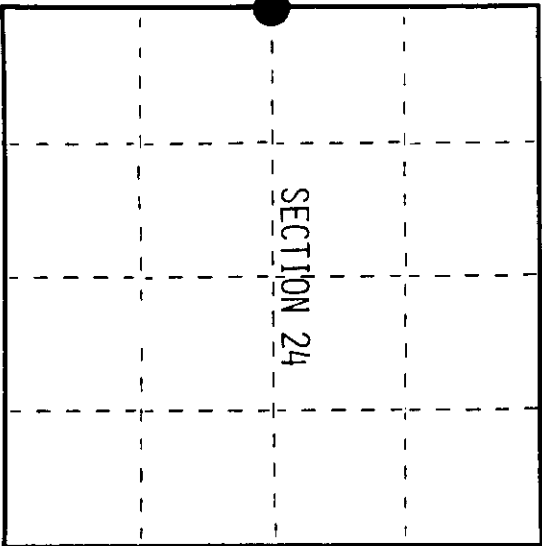
Dated at Hiles, Wis., this 28th day of August, 19 89

Signature: William B. Cochran, Land Surveyor (County Surveyor, Registered Land Surveyor, or other duly authorized official) Registration No. S-1107

Office of Register of Deeds, County of Oneida, I hereby certify that the within instrument was filed in this office for record on the 28th day of August, 19 89 at 10:00 o'clock A.M.

(Register of Deeds)

By: Deputy



● = Corner monument restored.

3811232000

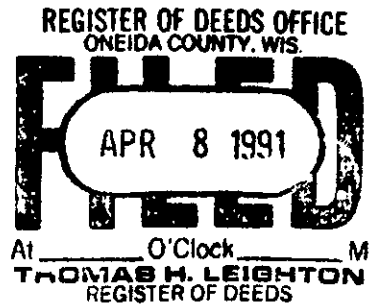
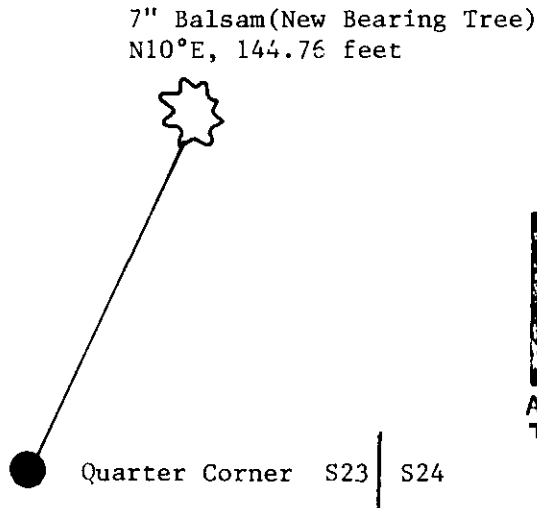
(e) Describe any material discrepancy between the location of the corner as restored or reestablished and the location of that corner as previously restored or reestablished by distance and direction. Show the discrepancy on the plan view drawing under (d), above. Show the distances between the corner as previously restored or reestablished and (1) the corner as restored or reestablished, and (2) to at least 2 of the witness monuments shown on the drawing in (d), above.

See drawing below.

(f) Was the corner restored through acceptance of (1) an obliterated evidence location, or, (2) a found perpetuated location?

Restored through acceptance of a found perpetuated location.

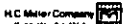
(g&h) Was the corner reestablished through lost corner proportionate methods? If so, show the method, including the directions and distances to other public land survey corners used as evidence or used for proportioning in determining the corner location?



(1) I, William B. Cochrane
(type or print name) certify that the corner location shown on this record was determined by me or under my direction and control and that this U.S. Public Land Survey Monument Record is correct and complete to the best of my knowledge and belief

William B. Cochrane August 28, 1989
Signature Date

Survey requested by: Tom Jordan 2/8/70
District Ranger Date



Stock No. 26273

U.S. PUBLIC LAND SURVEY MONUMENT RECORD

Index No. P-21

State of Wisconsin

County of Oneida } ss.

I, William B. Cochran, do hereby certify that on the 14th day of February, 1990, I found evidence of the West Quarter corner of Section 24 Township 38 North, Range 11 East, Fourth Principal Meridian, as described hereon; and that from this evidence I established a new monument and accessories as described hereon to perpetuate the original location of this corner.

Resident witnesses:

History of original corner establishment:

Dependent Resurvey in 1941 by Hugh B. Crawford. N00°09'W between Sections 23 and 24, at 40.30 1/2 chains restored corner position at proportionate distance. At the corner point, set a 6 inch diameter concrete monument, 2 feet long, with an iron post in center and a brass cap marked; 1/4, S23, S24, 1941. From which the following bear:

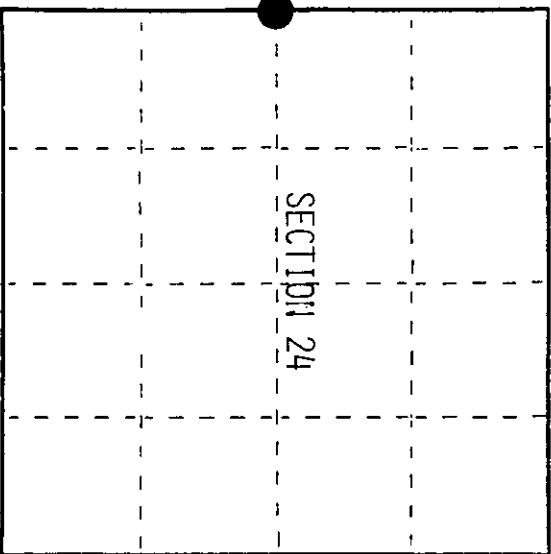
Poplar	6"	N60°30'E	12 1/2 links
Jack Pine	8"	S17°00'W	70 links
In 1967, Bill Cochran, a surveyor with the U.S. Forest Service, made the following new bearing trees;			
Balsam	3"	N18°E	10.27 feet
Balsam	5"	S71°W	37.45 feet
Spruce	8"	N13°W	42.58 feet
4"x4" Cedar Sign Post	NW		1.50 feet

Found monument as described and in place. All bearing trees were destroyed by a party in the process of establishing a wildlife opening.

Description of monument and accessories I established to perpetuate the original location of this corner.

Blazed and scribed the following new bearing trees;

Balsam	7"	N10°E	144.76 feet
Aspen	4"	S45°W	2.81 feet



Dated at Hills, Wis., this 15th day of February, 1990

Signature: William B. Cochran Title Land Surveyor (County Surveyor, Registered Land Surveyor, or other duly authorized official) Registration No. S-1107

Office of Register of Deeds, County of Oneida, I hereby certify that the within instrument was filed in this office for record on the 15th day of February, 1990 at 10:00'clock A.M.

(Register of Deeds)

By Deputy

3811232000

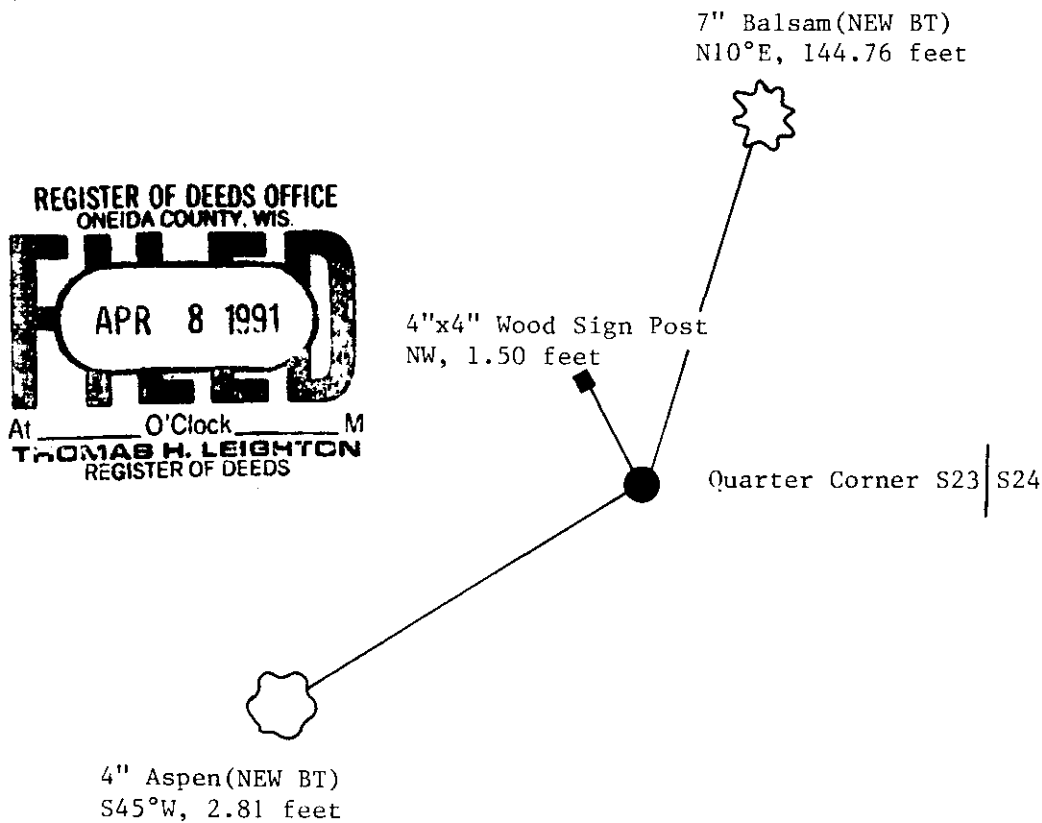
e) Describe any material discrepancy between the location of the corner as restored or reestablished and the location of that corner as previously restored or reestablished by distance and direction. Show the discrepancy on the plan view drawing under (d), above. Show the distances between the corner as previously restored or reestablished and (1) the corner as restored or reestablished, and (2) to at least 2 of the witness monuments shown on the drawing in (d), above.

See drawing below.

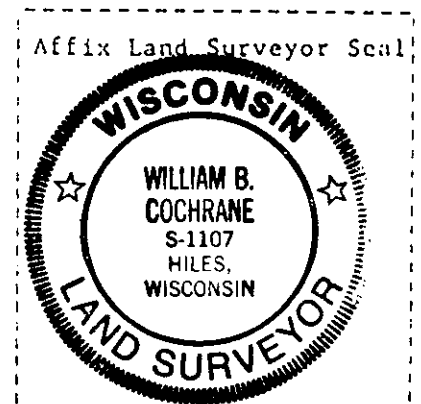
(f) Was the corner restored through acceptance of (1) an obliterated evidence location, or, (2) a found perpetuated location?

Restored through acceptance of a found perpetuated location.

(g&h) Was the corner reestablished through lost corner proportionate methods? If so, show the method, including the directions and distances to other public land survey corners used as evidence or used for proportioning in determining the corner location?



REGISTER OF DEEDS OFFICE
ONEIDA COUNTY, WIS.
FILED
APR 8 1991
At _____ O'Clock _____ M
THOMAS H. LEIGHTON
REGISTER OF DEEDS



(i) William B. Cochrane
(type or print name) certify that the corner location shown on this record was determined by me or under my direction and control and that this U.S. Public Land Survey Monument Record is correct and complete to the best of my knowledge and belief.

William B. Cochrane Feb. 20, 1990
Signature Date

Survey requested by; Carol Jordan 3/1/90
District Ranger Date