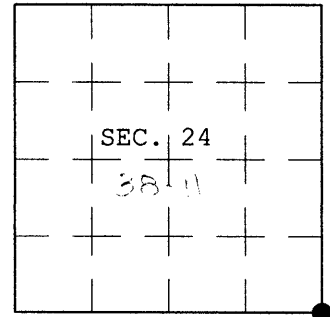


U.S. PUBLIC LAND SURVEY MONUMENT RECORD

Note: This form is intended and designed to fulfill all requirements of Wisconsin Administrative Code, Chapter A-E 7.08 U.S. Public Land Survey Monument Record (3) (a) (b) (c) (d) (e) (f) (g) (h) (i). An additional sheet may be added if necessary to conform with said requirements.

(a) CORNER LOCATION: Plane Coordinates
 Corner of Secs. 19, 24, 25 & 30 X:
 Township 38 North Y:
 Range 11 & 12 East, 4th P.M. Datum:
 Town of Three Lakes County of Oneida



(b) HISTORY OF ORIGINAL CORNER ESTABLISHMENT

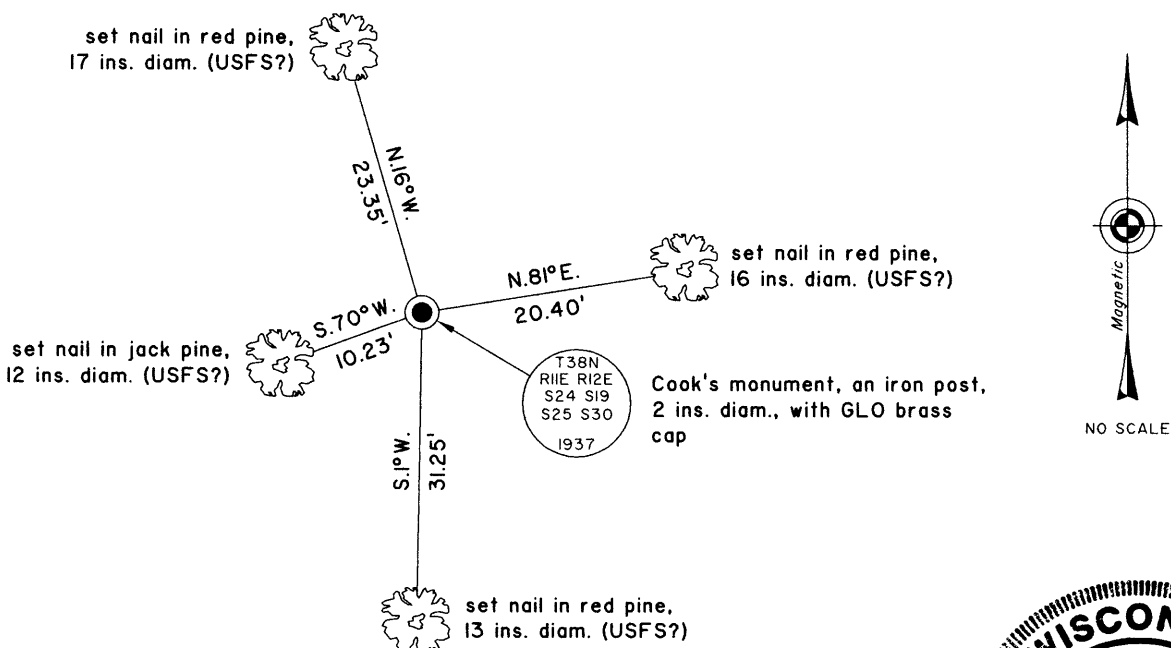
Original Surveyor: Alfred Millard Original Accessories:
 Date of Survey: Commenced June, 1858 white pine 26" N.57°W., 59 lks.
 Completed June, 1858 white pine 24" N.52°E., 20 lks.
 white birch 12" S.62°E., 57 lks.
 white birch 10" S.16°W., 46 lks.

(b) (f) (g) (h) Description of monument found at this corner and if it was accepted, state all evidence (material, testimonial, occupational, plats, records, other monuments) used as a basis for accepting. If not accepted or if nothing was found, state evidence used as basis for establishing location. If re-established through lost corner proportionate methods, indicate all monuments, distances and directions used to establish. Indicate type of monument and sign post found or set.

June 1937 - Sept. 1938: Wesson Cook, General Land Office surveyor, set an iron post with brass cap, 36 ins. long, 2 ins. diam., from the remains of the original bearing trees. He established new bearing trees: a poplar, 8 ins. diam., bears N.21-1/2°E., 51 lks. dist., a poplar, 6 ins. diam., bears S.50-1/4°E., 85 lks. dist., a poplar, 7 ins. diam., bears S.70-1/2°W., 43 lks. dist., and a poplar, 6 ins. diam., bears N.31-1/2°W., 85 lks. dist.

12 November 2003: I found and accepted Cook's monument, a 2 ins. diam. iron post, projecting 10 ins. above the ground with GLO brass cap mkd. as shown below. I established accessories as shown below and set a plastic sign post bearing South, 1 ft. dist.

(c) (d) (e) Plan view of corner with ties to at least 4 witness monuments. If in disagreement with previously established corner, show the distances between the two corners and also indicate the ties to the disputed.



(i) I, Jeffrey W. Austin, Registered Land Surveyor No. S-1885, hereby certify upon honor that the corner location on this record was determined by me or under my direction and control and that this U.S. Public Land Survey Monument Record is correct and complete to the best of my knowledge and belief.

Signature:  Date: 5 MAR 2004



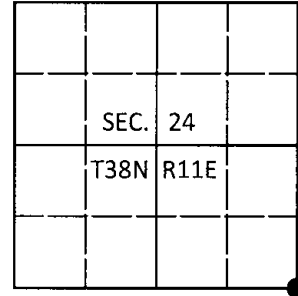
3811240000

U.S. PUBLIC LAND SURVEY MONUMENT RECORD

Note: This form is intended and designed to fulfill all requirements of Wisconsin Administrative Code, Chapter A-E 7.08 U.S. Public Land Survey Monument Record (3)(a-1).

(a) CORNER LOCATION
Cor. of Secs. 19, 24, 25 & 30
Township 38 North
Range 11 & 12 East of the 4th P.M.
Town of Three Lakes
County of Oneida

WISCRS - Oneida County
N: 206,907.61 USft
E: 356,886.84 USft
Datum: NAD 83(1991)
GNSS Method: Static - Offset
GNSS Control: Unknown (by AME)



(b) HISTORY OF ORIGINAL CORNER ESTABLISHMENT

Original Surveyor: _____ Original Accessories: _____
Date of Survey _____ Commenced: _____
Completed: _____

(b)(f)(g)(h) Description of monument found at this corner and if it was accepted, state all evidence (material, testimonial, occupational, plats, records, other monuments) used as a basis for accepting. If not accepted or if nothing was found, state evidence used as basis for establishing location. If re-established through lost corner proportionate methods, indicate all monuments, distances and directions used to establish. Indicate type of monument and sign post found or set.

This is a perpetuation of a previous USPLS Monument Record by Jeffrey W. Austin, RLS dated March 5, 2004 and filed in the office of the Oneida County Register of Deeds. A complete history of the corner can be found on the previous monument record. I accept the previous location as a true and faithful perpetuation or reestablishment of the original corner location and further perpetuate it as follows.

August 21, 2016: I found and accepted the record monument, a 2" diam. iron pipe with a 2-1/2" diam. GLO brass cap projecting 10" above the ground surface. The existing accessories were found in substantial agreement with the record and were not remeasured as the sole purpose of this work is to report the coordinates of the corner point.

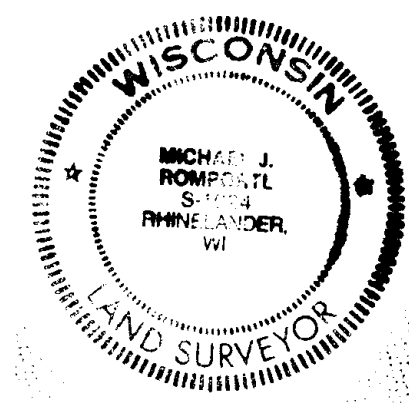
The coordinate value shown has been verified by at least one of the following methods: 1) comparison to a previously GPS determined published value; 2) the value is the average of two or more GPS observations at a markedly different time; 3) one or more distances were measured back to the GPS observed corner from temporary GPS observed offset locations.

(c)(d)(e) Plan view of corner with ties to at least 4 witness monuments. If in disagreement with previously established corner, show the distances between the two corners and also indicate the ties to the disputed.

REGISTER OF DEEDS OFFICE
ONEIDA COUNTY
FILED

DEC 28 2016

AT _____ O'CLOCK _____ M
KYLE J. FRANSON
REGISTER OF DEEDS



(i) I, Michael J. Romportl, Professional Land Surveyor No. S-1624, hereby certify that the corner location on this record was determined by me or under my direction and control and that this U.S. Public Land Survey Monument Record is correct and complete to the best of my knowledge and belief.

Michael J Romportl 12/23/2016
Signature Date