

U.S. PUBLIC LAND SURVEY MONUMENT RECORD

Index No. R-23

State of Wisconsin }
County of Onieda } ss.

I, William B. Cochran, do hereby certify that on the 14th day of February, 19 90, I found evidence of the South Quarter corner of Section 24 Township 38 North, Range 11 East, Fourth Principal Meridian, as described hereon; and that from this evidence I established a new monument and accessories as described hereon to perpetuate the original location of this corner.

Resident witnesses:

History of original corner establishment:

Dependent Resurvey in 1941 by Hugh B. Crawford. N83°24'W between Sections 24 and 25, at proportionate distance of 41.18 chains, set a concrete monument, 2 feet long, 6 inches in diameter, with an iron post in center and a brass cap marked; 1/4, S24, S25, 1941. From which the following bear;

White Birch 6" N37°45'W 53 links
White Birch 5" S41°30'W 43½ links

In 1962, Jean Resvick, surveyor with the U.S. Forest Service cut the following new BT's.

Description of corner evidence found:
White Birch 7" N88°30'E 35.80 feet
White Birch 9" N45°30'W 62.85 feet

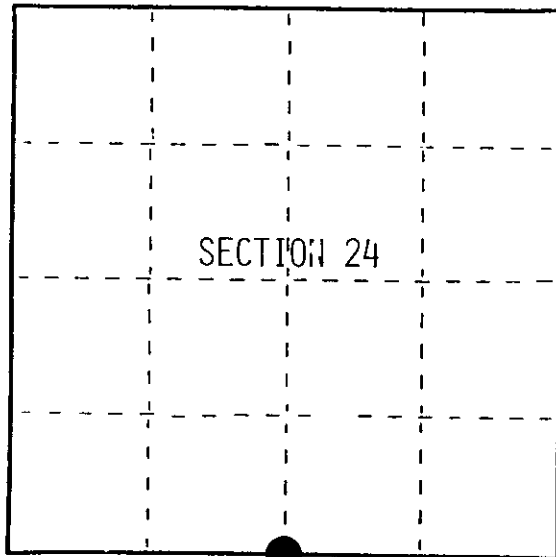
Found monument as described and in place, from which the following bear;

White Birch 14" N88°30'E 35.80 feet
White Birch 14" N45°30'W 62.85 feet

Description of monument and accessories I established to perpetuate the original location of this corner.

Blazed and scribed a new bearing tree;

Spruce 13" N7°E 53.82 feet



● = Corner monument restored.

Dated at Hiles, Wis., this 15th day of February, 1990.

Signature William B. Cochran Title Land Surveyor Registration No. S-1107
(County Surveyor, Registered Land Surveyor, or other duly authorized official)

Office of Register of Deeds, County of _____, I hereby certify that the within instrument was filed in this office for record on the _____ day of _____, 19____ at _____ o'clock _____ M.

(Register of Deeds)

By _____ Deputy

FORM NO. 985-A

U.S. GOVERNMENT PRINTING OFFICE: 1985

Stock No. 26273

3811240026

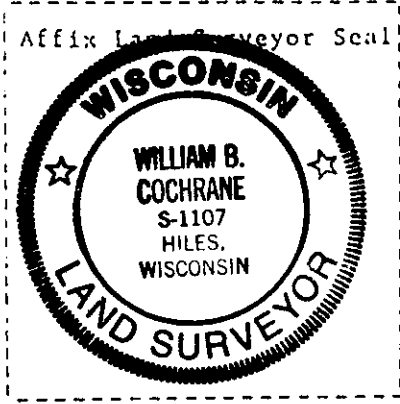
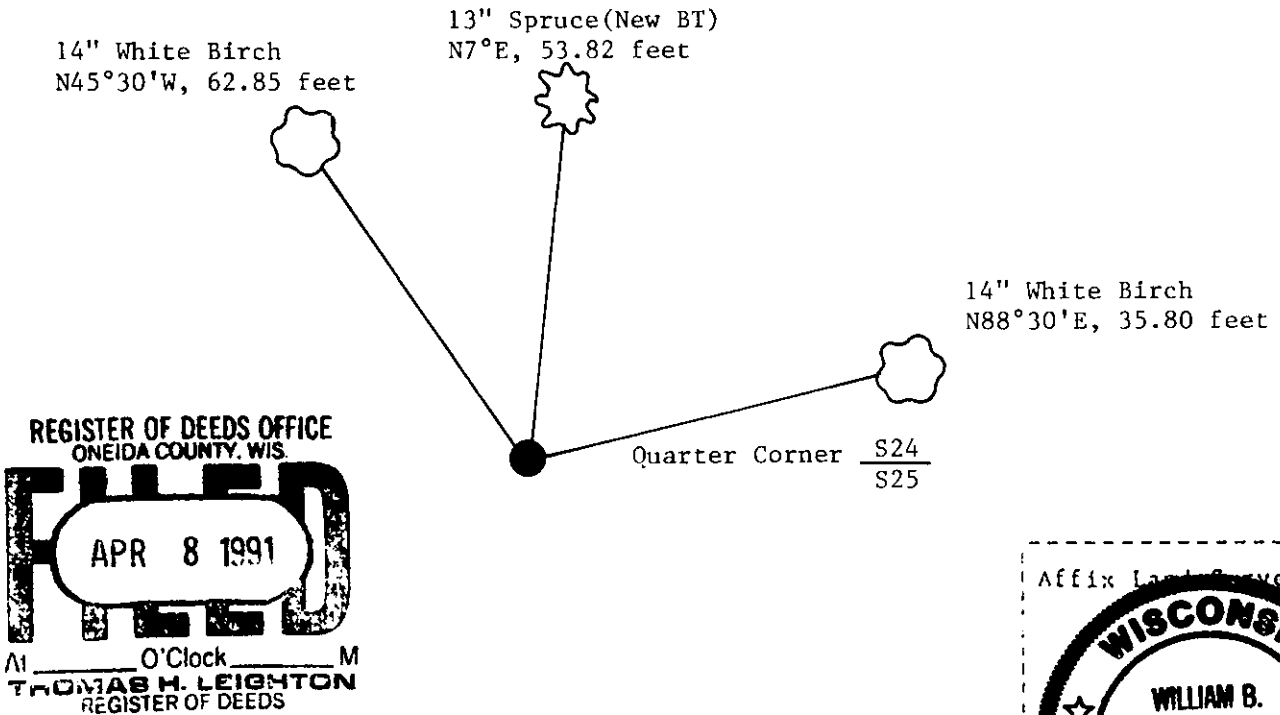
e) Describe any material discrepancy between the location of the corner as restored or reestablished and the location of that corner as previously restored or reestablished by distance and direction. Show the discrepancy on the plan view drawing under (d), above. Show the distances between the corner as previously restored or reestablished and (1) the corner as restored or reestablished, and (2) to at least 2 of the witness monuments shown on the drawing in (d), above.

See drawing below.

(f) Was the corner restored through acceptance of (1) an obliterated evidence location, or, (2) a found perpetuated location?

Restored through acceptance of a found perpetuated location.

(g&h) Was the corner reestablished through lost corner proportionate methods? If so, show the method, including the directions and distances to other public land survey corners used as evidence or used for proportioning in determining the corner location?



(i) I, William B. Cochrane (type or print name) certify that the corner location shown on this record was determined by me or under my direction and control and that this U.S. Public Land Survey Monument Record is correct and complete to the best of my knowledge and belief.

William B. Cochrane Signature Feb. 20, 1990 Date

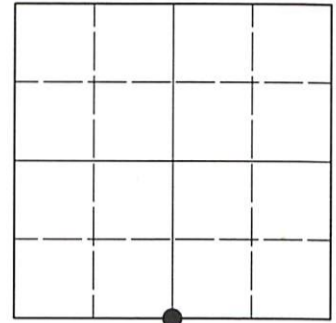
Survey requested by; Pam Gordon District Ranger 3/1/90 Date

U.S. PUBLIC LAND SURVEY MONUMENT RECORD

Note: This form is intended and designed to fulfill all requirements of Wisconsin Administrative Code, Chapter A-E 7.08 U.S. Public Land Survey Monument Record (3)(a-i).

(a) CORNER LOCATION
 1/4 Cor. of Secs. 24 & 25
 Township 38 North
 Range 11 East of the 4th P.M.
 Town of Three Lakes
 County of Oneida

WISCRS - Oneida County
 N: 207,203.40 USft
 E: 354,185.15 USft
 Datum: NAD 83(2011) ep. 2010.00
 GNSS Method: RTN - Offset
 GNSS Control: WISCRS VRS



Sec. 24, T. 38 N., R. 11 E.

(b)(f)(g)(h) Description of monument found at this corner and if it was accepted, state all evidence (material, testimonial, occupational, plats, records, other monuments) used as a basis for accepting. If not accepted or if nothing was found, state evidence used as basis for establishing location. If re-established through lost corner proportionate methods, indicate all monuments, distances and directions used to establish. Indicate type of monument and sign post found or set.

This record is a perpetuation of the following land corner document(s):

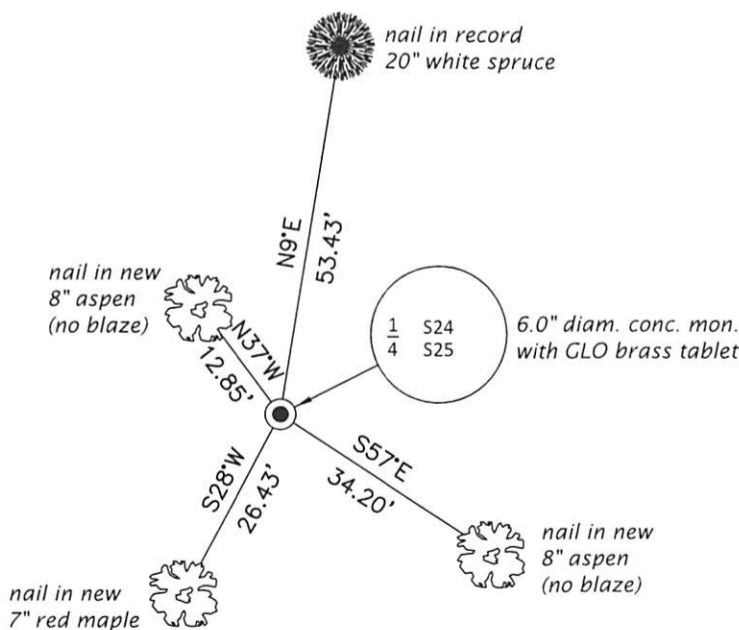
February 15, 1990: USPLS Monument Record by William B. Cochrane, filed in Oneida County

A complete history of the corner can be found on the previous land corner document(s). I accept the record activity as a true and faithful perpetuation or reestablishment of the original corner location and further perpetuate it as described below.

July 29, 2021: I found and accepted the record monument, a 6.0" diam. concrete monument, firmly set, with a 2.5" diam. GLO brass tablet projecting 3" above the ground surface. Both record birch bearing trees are standing dead. I found or established accessories as shown below. I set a white vinyl sign post bearing NW, 0.9 ft.

The coordinate value shown has been verified by at least one of the following methods: 1) comparison to a previously GNSS determined published value; 2) the value is the average of two or more GNSS observations at a markedly different time; 3) one or more distances were measured back to the GNSS observed corner from temporary GNSS observed offset locations.

(c)(d)(e) Plan view of corner with ties to at least 4 witness monuments. If in disagreement with previously established corner, show the distances between the two corners and also indicate the ties to the disputed.



REGISTER OF DEEDS OFFICE
 ONEIDA COUNTY
 FILED

SEP 27 2021

KYLE J. FRANSON
 REGISTER OF DEEDS

(i) I, Jeffrey W. Austin, Professional Land Surveyor No. S-1885, hereby certify that the corner location on this record was determined by me or under my direction and control and that this U.S. Public Land Survey Monument Record is correct and complete to the best of my knowledge and belief.

[Handwritten Signature]
 Signature

[Handwritten Date]
 Date