

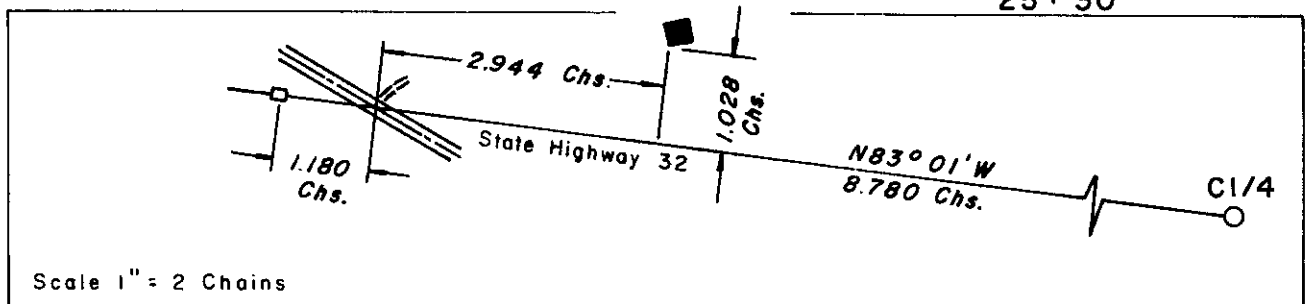
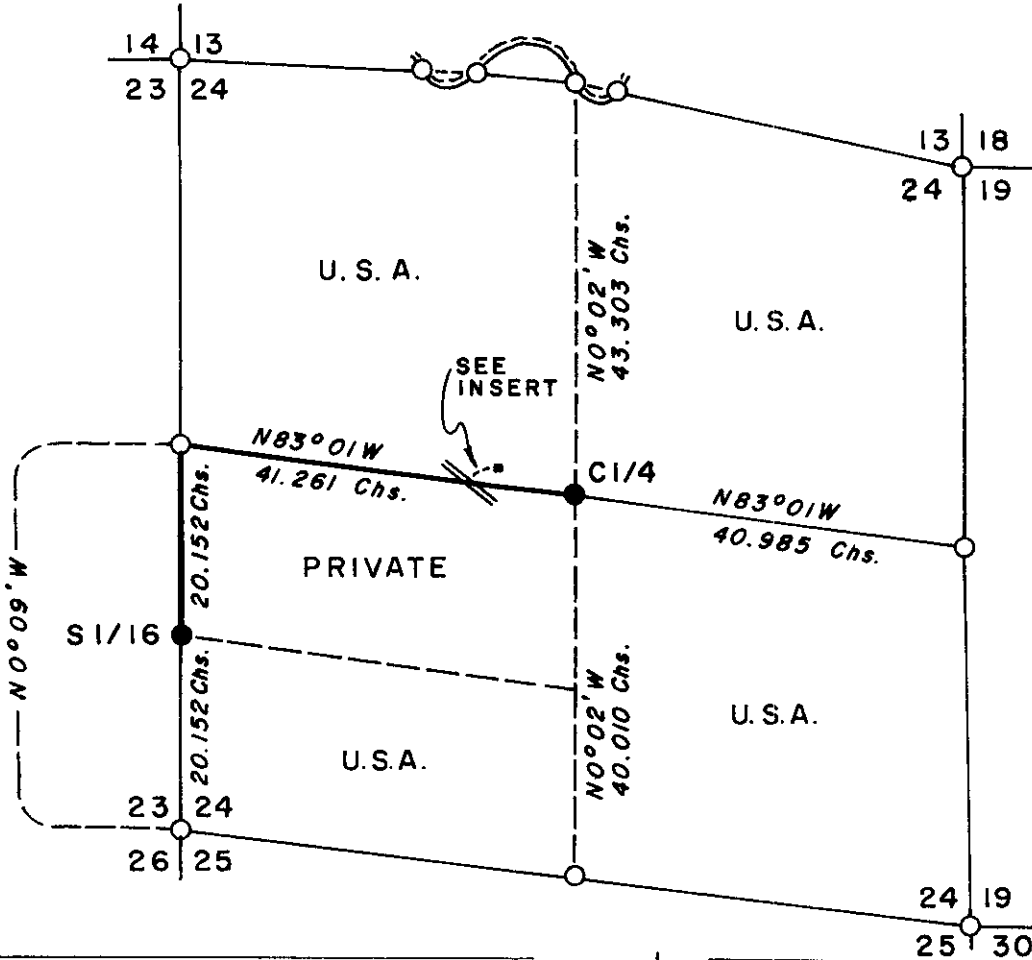
REGISTER'S OFFICE
 Oneida County, Wis.
 Received for Record the 12th day of
January A. D. 19 76 at
2:00 o'clock P. M. and recorded in
 Vol 101 Page 100
Doris Herge Ruetz
 Register

PLAT OF SURVEY U. S. GOVERNMENT LAND

Sheet 1 of 3

Being all of Section 24 except the North half of SW 1/4
 Section 24, T. 38 N. R. 11 E. 4th P. M.

Oneida County, Wisconsin



Scale 1" = 2 Chains

LEGEND

- BLM Monuments, 1941 Dependent Resurvey
- 2 Inch I.D. by 5 foot long iron pipe capped with 3 inch brass tablet stamped to identify corner
- Unsurveyed Section Subdivision Line
- Boundary U.S. Government Land Marked
- 4" x 4" Cedar Line Post
- 20' x 22' Cabin

3811231000
 3811242020

P-23