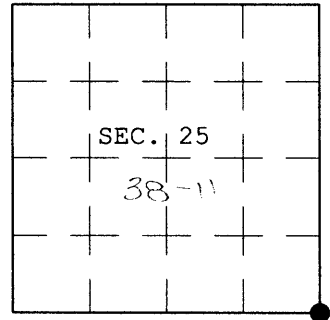


U.S. PUBLIC LAND SURVEY MONUMENT RECORD

Note: This form is intended and designed to fulfill all requirements of Wisconsin Administrative Code, Chapter A-E 7.08 U.S. Public Land Survey Monument Record (3) (a) (b) (c) (d) (e) (f) (g) (h) (i). An additional sheet may be added if necessary to conform with said requirements.

(a) CORNER LOCATION: Plane Coordinates
 Corner of Secs. 25, 30, 31 & 36 X:
 Township 38 North Y:
 Range 11 & 12 East, 4th P.M. Datum:
 Town of Three Lakes County of Oneida



(b) HISTORY OF ORIGINAL CORNER ESTABLISHMENT

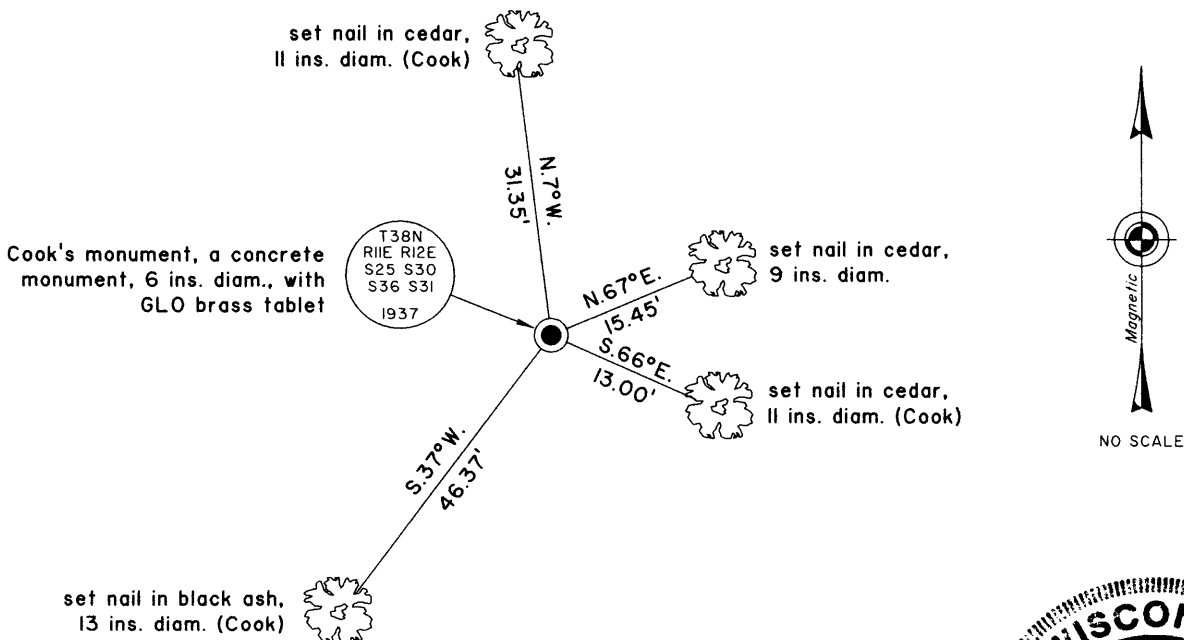
Original Surveyor: Alfred Millard Original Accessories:
 Date of Survey: Commenced June, 1858 black ash 10" N.88°W., 17 lks.
 Completed June, 1858 tamarack 14" N.54°E., 36 lks.
 tamarack 12" S.56°E., 21 lks.
 black ash 8" S.55°W., 28 lks.

(b) (f) (g) (h) Description of monument found at this corner and if it was accepted, state all evidence (material, testimonial, occupational, plats, records, other monuments) used as a basis for accepting. If not accepted or if nothing was found, state evidence used as basis for establishing location. If re-established through lost corner proportionate methods, indicate all monuments, distances and directions used to establish. Indicate type of monument and sign post found or set.

June 1937 - Sept. 1938: Wesson Cook, General Land Office surveyor, set a concrete monument with brass tablet, 24 ins. long, 6 ins. diam., from the remains of the original bearing trees. He established new bearing trees: a cedar, 8 ins. diam., bears N.9-1/4°E., 42 lks. dist., a cedar, 6 ins. diam., bears S.73-3/4°E., 20 lks. dist., an ash, 9 ins. diam., bears S.35-1/4°W., 70 lks. dist., and a cedar, 8 ins. diam., bears N.8-1/2°W., 48 lks. dist.

2 November 2003: I found and accepted Cook's monument, a 6 ins. diam. concrete monument, projecting 6 ins. above the ground with GLO brass tablet mkd. as shown below. I found Cook's cedar standing dead, bears N.9°E., 42 lks. dist. I found and established accessories as shown below and set a plastic sign post bearing West, 1 ft. dist.

(c) (d) (e) Plan view of corner with ties to at least 4 witness monuments. If in disagreement with previously established corner, show the distances between the two corners and also indicate the ties to the disputed.



(i) I, Jeffrey W. Austin, Registered Land Surveyor No. S-1885, hereby certify upon honor that the corner location on this record was determined by me or under my direction and control and that this U.S. Public Land Survey Monument Record is correct and complete to the best of my knowledge and belief.



INDEX NO. V-25

Signature [Handwritten Signature] Date 5 MAR 2004

381250000