

U.S. PUBLIC LAND SURVEY MONUMENT RECORD

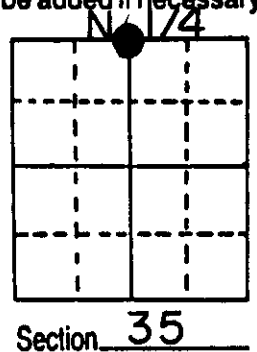
Note: This form is intended and designed to fulfill all requirements of Wisconsin Administrative Code, Chapter A-E 5.02, U.S. Public Land Survey Monument Record (3) (a) (b) (c) (d) (e) (f) (g) (h) (i). An additional sheet may be added if necessary to conform with said requirements.

(a) Corner location: Township 38 North

Range 11 East ~~West~~

Town/City/Village of THREE LAKES

County of ONEIDA

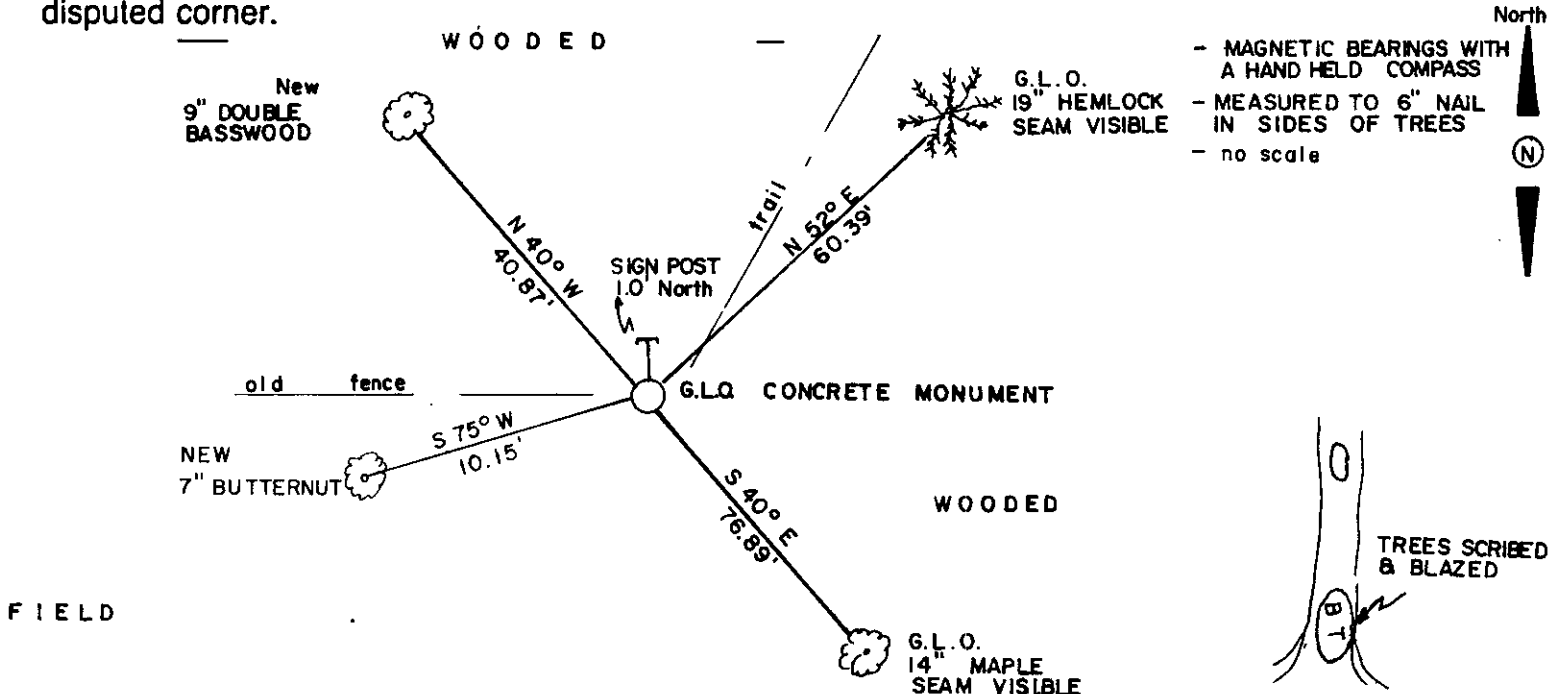


(b) (f) (g) (h) Description of monument found at this corner and if it was accepted, state all evidence (material, testimonial, occupational, plats, records, other monuments) used as a basis for accepting. If not accepted or if nothing was found, state evidence used as basis for establishing location. If reestablished through lost corner proportionate methods, indicate all monuments, distances and directions used to establish.

-1859 William E. Daugherty established original corner @ 40.00 chains
 B.T.s Birch 14 N 73 W 12lks.; Hemlock 14 S 57 E 27
 -1941 Hugh B Crawford a surveyor with the General Land Office executed a resurvey of Sec. 35 and at the N $\frac{1}{4}$ cor. found the remains of the original bearing trees and set a 24" x 6" concrete monument for the corner and made the following B.T.s;
 Hemlock 10 N 52° E 27 lks.; Maple 9 S 40° E 116 $\frac{1}{2}$ lks.

-At this corner I found the G.L.O. monument disturbed and the bearing trees in place. The monument was in good condition so I straightened the monument up setting it from the G.L.O. bearing trees and also made the bearing trees as shown below.

(c) (d) (e) Plan view of corner with ties to at least 4 witness monuments. If in disagreement with previously established corner, show the distances between the two corners and also indicate the ties to the disputed corner.



(i) I, MICHAEL J. ROMPORTL R.L.S. 1624
 (type or print name) certify that the corner location on this record was determined by me or under my direction and control and that this U.S. Public Land Survey Monument Record is correct and complete to the best of my knowledge and belief.

Michael J Romportl Date MAY 31, 1985
 Signature Date
 GENISOT. & ASSOCIATES, INC - 1512 EAGLE ST. - RHINELANDER, WIS.