

U.S. PUBLIC LAND SURVEY MONUMENT RECORD

Note: This form is intended and designed to fulfill all requirements of Wisconsin Administrative Code, Chapter A-E 5.02, U.S. Public Land Survey Monument Record (3) (a) (b) (c) (d) (e) (f) (g) (h) (i). An additional sheet may be added if necessary to conform with said requirements.

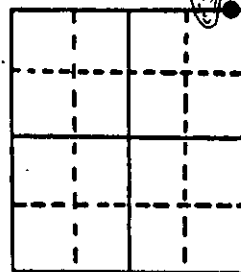
(a) Corner location: Township 38 North

MC ON EAST SIDE CROOKED LK.

Range 11 East ~~West~~

Town/City/Village of THREE LAKES

County of ONEIDA

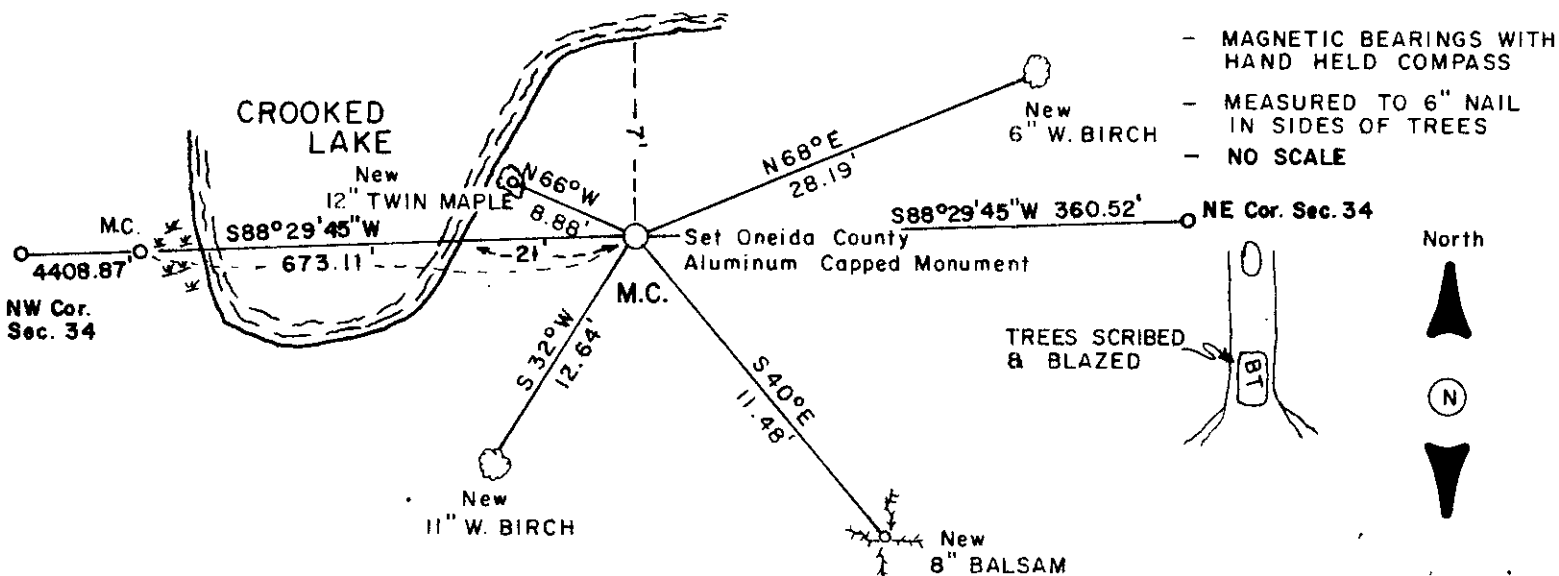


Section 34

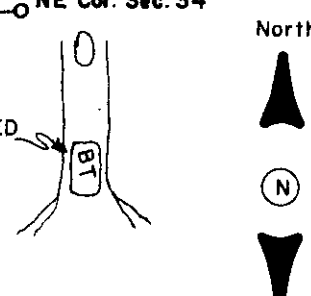
(b) (f) (g) (h) Description of monument found at this corner and if it was accepted, state all evidence (material, testimonial, occupational, plats, records, other monuments) used as a basis for accepting. If not accepted or if nothing was found, state evidence used as basis for establishing location. If reestablished through lost corner proportionate methods, indicate all monuments, distances and directions used to establish.

- 1859 William E. Daugherty established original corner @ 6.40 chains west of NW corner. B.T.s; Tam. 10 N 45 E 10 , Hemlock 12 S 85 E 9.
- 1918 D.H. Vaughn, while establishing the NE corner did not find the M.C.
- I established this corner by setting it on a straight line between the NE corner and the NW corner on the east side of Crooked Lake. There appears to be quite a bit of erosion of the banks of Crooked Lake, apparently accounting for the difference in the recorded distances from the NE corner to the lake. I set an Oneida County Aluminum Capped Monument and witnessed it as shown below. No evidence of original found.

(c) (d) (e) Plan view of corner with ties to at least 4 witness monuments. If in disagreement with previously established corner, show the distances between the two corners and also indicate the ties to the disputed corner.

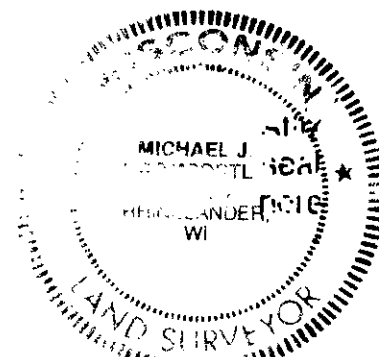


- MAGNETIC BEARINGS WITH HAND HELD COMPASS
- MEASURED TO 6" NAIL IN SIDES OF TREES
- NO SCALE



(i) I, MICHAEL J. ROMPORTL R.L.S. 1624
 (type or print name) certify that the corner location on this record was determined by me or under my direction and control and that this U.S. Public Land Survey Monument Record is correct and complete to the best of my knowledge and belief.

Michael J. Romportl MAY 31, 1985
 Signature Date
 GENISOT & ASSOCIATES, INC. - 1512 EAGLE ST. - RHINELANDER, WIS.



Index No. V-17

3811270003

U S PUBLIC LAND SURVEY MONUMENT RECORD

NOTE: This form is intended and designed to fulfill all requirements of Wisconsin Administrative Code, Chapter A-E 7.08 U.S. Public Land Survey Monument Record (3) (a-i)

A-E 7.08(3)(a) Identity of corner:
MEANDER CORNER SOUTH LINE OF
SECTION 27, TOWNSHIP 38 NORTH,
RANGE 11 EAST OF THE 4TH PM,
TOWN OF THREE LAKES,
COUNTY OF ONEIDA

WISCRS - ONEIDA COUNTY
N: 202,338.289 USft (XXX,XXX.XXX)
E: 345,811.454 USft (XXX,XXX.XXX)
Datum: NAD83 (2011)
GNSS Method RTK
GNSS Control WISCORS VRS



The coordinate value shown has been verified by the average of two or more GPS observations at a markedly different time. Coordinates shown in parenthesis are previously published values.

A-E 7.08(3)(b)

Original Surveyor: William E. Daugherty - August 30 - September 5, 1859

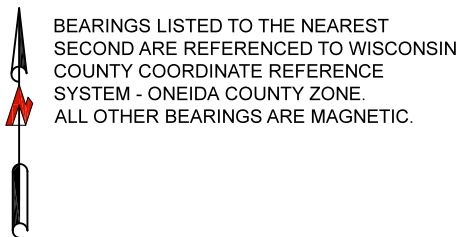
Original Accessories:

Tamarac	12	N 45° E	10 links
Hemlock	10	S 85° E	9 links

See previous U.S.Public Land Survey Monument Location Record - V-17 - May 31, 1985 - Surveyor 1624 - Michael J. Romportl - THENCE:

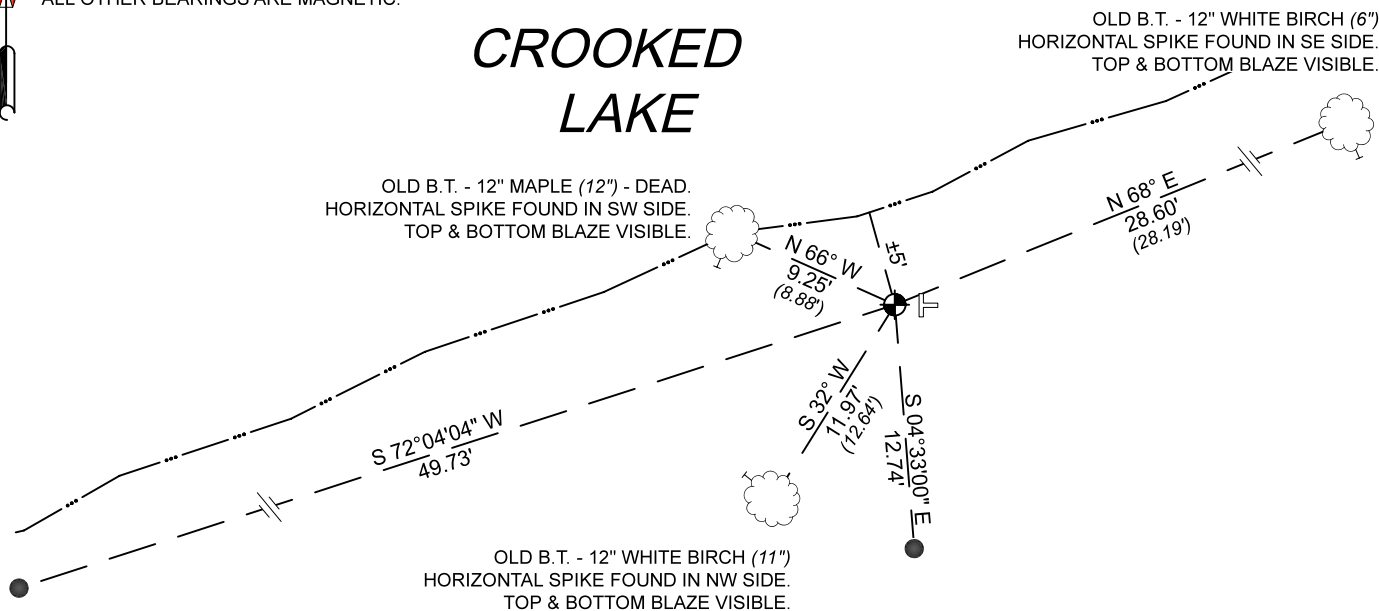
December 27, 2023 - I found an Oneida County aluminum monument, being a 2.25" diameter aluminum pipe with a 3.25" diameter aluminum cap stamped to identify the corner location. The monument extends ±6" above grade and is ±5 feet from the shore of Crooked Lake. I also found 2 of Romportl's bearing trees standing and in good condition, and 2 dead. I established 2 new witnesses as shown below.

A-E 7.08(3)(c)(d) Plan view of corner with references to at least 4 witness monuments.



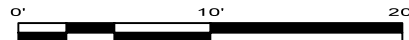
BEARINGS LISTED TO THE NEAREST
SECOND ARE REFERENCED TO WISCONSIN
COUNTY COORDINATE REFERENCE
SYSTEM - ONEIDA COUNTY ZONE.
ALL OTHER BEARINGS ARE MAGNETIC.

CROOKED LAKE



LEGEND

- This Corner
- 0.75" diameter X 18" long iron rod, set
- Vinyl t-post, set ±1 foot east of corner



A-E 7.08(3)(e) 1985 Surveyor set an Oneida County aluminum capped monument, I found the same in 2023.

A-E 7.08(3)(f) I accept this monument as a FOUND PERPETUATED LOCATION of the corner.

A-E 7.08(3)(g)(h) This corner was not determined through lost-corner-proportionate methods.

A-E 7.08(3)(i) I, Jeffrey L. DeMuth, Professional Land Surveyor No. S-2656, hereby certify that the corner location on this record was determined by me or under my direction and control, and that this U.S. Public Land Survey Monument Record is correct and complete to the best of my knowledge, and belief.



Handwritten signature of Jeffrey L. DeMuth

December 29, 2023

SIGNATURE

DATE

43811270003