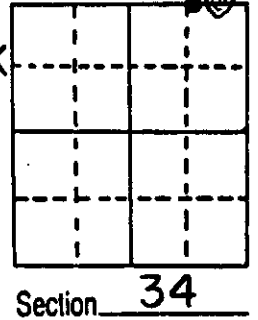


# U.S. PUBLIC LAND SURVEY MONUMENT RECORD

**Note:** This form is intended and designed to fulfill all requirements of Wisconsin Administrative Code, Chapter A-E 5.02, U.S. Public Land Survey Monument Record (3) (a) (b) (c) (d) (e) (f) (g) (h) (i). An additional sheet may be added if necessary to conform with said requirements.

(a) Corner location: Township 38 North  
 Range 11 East/West  
 Town/City/Village of THREE LAKES  
 County of ONEIDA

MC ON WEST  
SIDE CROOKED LK

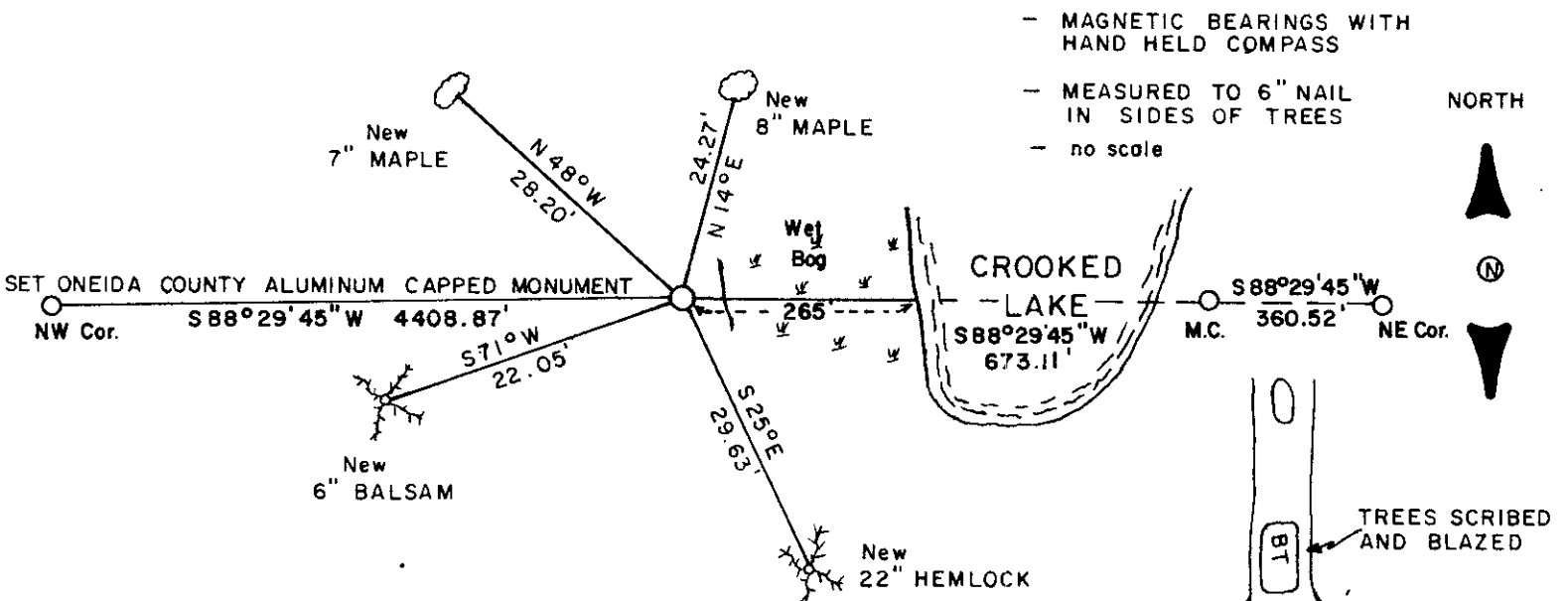


(b) (f) (g) (h) Description of monument found at this corner and if it was accepted, state all evidence (material, testimonial, occupational, plats, records, other monuments) used as a basis for accepting. If not accepted or if nothing was found, state evidence used as basis for establishing location. If reestablished through lost corner proportionate methods, indicate all monuments, distances and directions used to establish.

- 1859 William E. Daugherty established original corner 15.51 chains west of NE corner. B.T.s; W. Birch 6 N 47 W 6, Cedar 6 S 40 W 15.
- 1918 D.H. Vaughn, while establishing the NE corner did not find this M.C. and states he could not locate the west shore of the lake as the lake has grown over, and west shore is swampy; but the shore corresponds closely with the distance given in the U.S. notes.
- I established this corner by setting it on a straight line between the NE corner and the NW corner on the west side of Crooked Lake on solid ground. I set an Oneida County Aluminum Capped Monument and witnessed it as shown below. No evidence of original found.

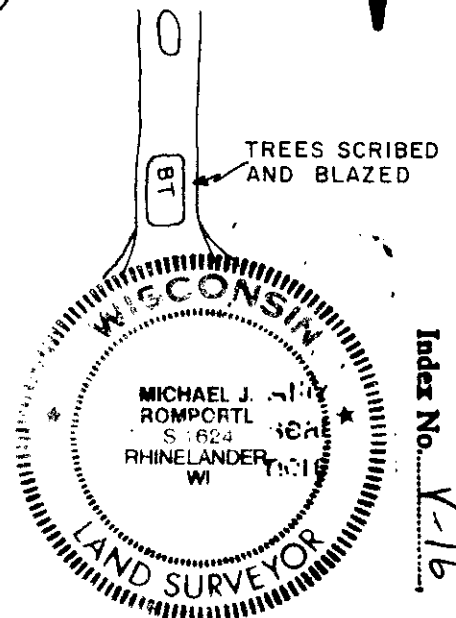
(c) (d) (e) Plan view of corner with ties to at least 4 witness monuments. If in disagreement with previously established corner, show the distances between the two corners and also indicate the ties to the disputed corner.

Note: Old, downed fence runs E-W  
35' north of corner.



(i) I, MICHAEL J. ROMPORTL R.L.S 1624  
 (type or print name) certify that the corner location on this record was determined by me or under my direction and control and that this U.S. Public Land Survey Monument Record is correct and complete to the best of my knowledge and belief.

Michael J. Romportl Date MAY 31, 1985  
 Signature  
 GENISOT & ASSOCIATES, INC. - 1512 EAGLE ST., RHINELANDER, WIS.



3811270007

# U S PUBLIC LAND SURVEY MONUMENT RECORD

NOTE: This form is intended and designed to fulfill all requirements of Wisconsin Administrative Code, Chapter A-E 7.08 U.S. Public Land Survey Monument Record (3) (a-i)

A-E 7.08(3)(a) Identity of corner:  
MEANDER CORNER SOUTH LINE OF  
SECTION 27, TOWNSHIP 38 NORTH,  
RANGE 11 EAST OF THE 4TH PM,  
TOWN OF THREE LAKES,  
COUNTY OF ONEIDA

WISCRS - ONEIDA COUNTY  
N: 202,318.135 USft (XXX,XXX.XXX)  
E: 345,139.167 USft (XXX,XXX.XXX)  
Datum: NAD83 (2011)  
GNSS Method RTK  
GNSS Control WISCORS VRS



The coordinate value shown has been verified by the average of two or more GPS observations at a markedly different time. Coordinates shown in parenthesis are previously published values.

A-E 7.08(3)(b)

Original Surveyor: William E. Daugherty - August 30 - September 5, 1859

Original Accessories:

Birch	6	N 47° W	6 links
Cedar	6	S 40° W	15 links

See previous U.S.Public Land Survey Monument Location Record - V 16 - May 31, 1985 - Surveyor 1624 - Michael J. Romportl - THENCE:

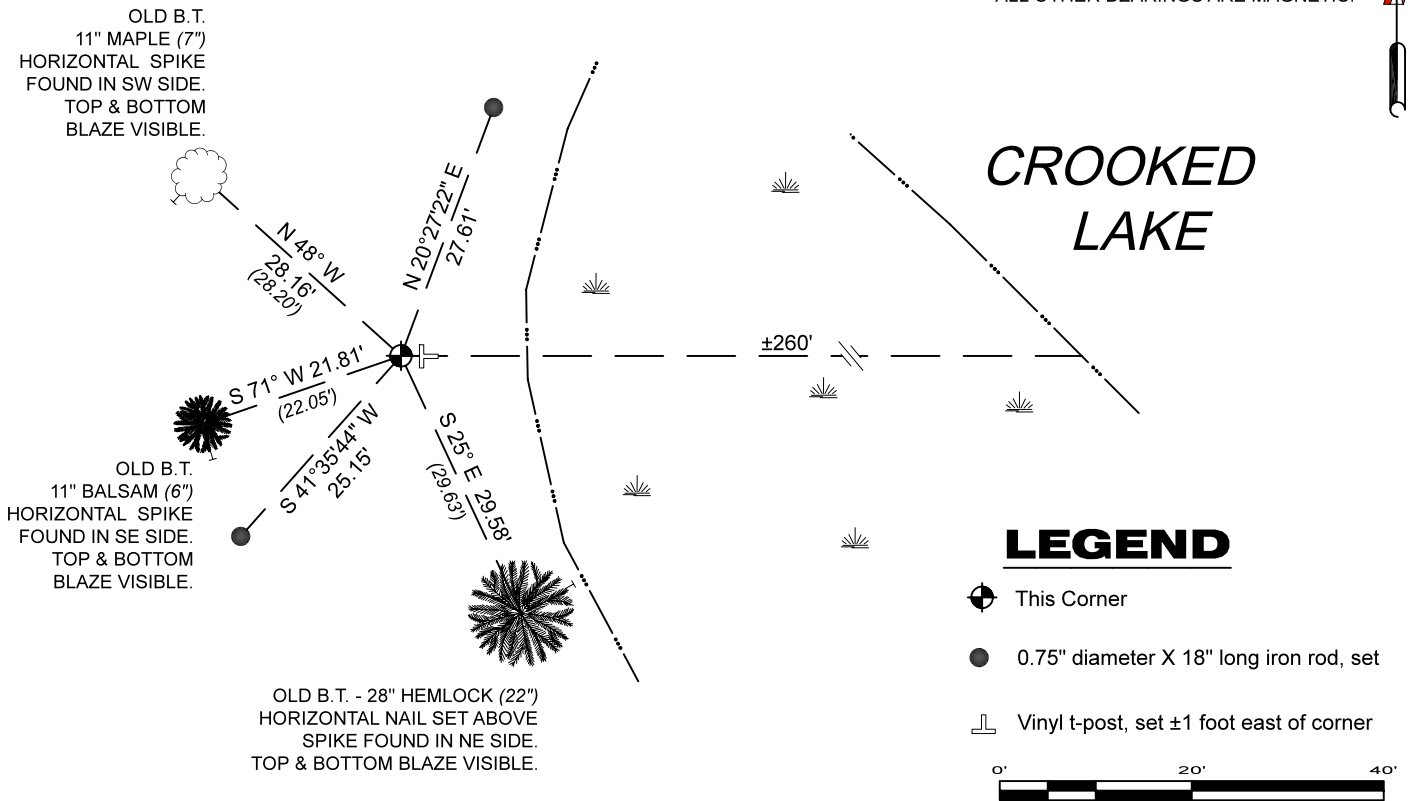
July 1, 1991 - Surveyor 1763 - Thomas A. Boettcher - indicates this position as "Oneida County aluminum monument in place" on Oneida County Map #B7440.

October 17, 1994 - Surveyor 2070 - Michael E. Weber - indicates this position as "Oneida County aluminum monument found in place" on Oneida County Map #B2998.

December 27, 2023 - I found an Oneida County aluminum monument, being a 2.25" diameter aluminum pipe with a 3.25" diameter aluminum cap stamped to identify the corner location. The monument extends ±12" above grade and is near the edge of a low wet area, and ±260 feet from the shore of Crooked Lake. The monument was leaning east, and I straightened to be plumb. I also found 3 of Romportl's bearing trees alive and in good condition, and 1 dead. I established 2 new witnesses as shown below.

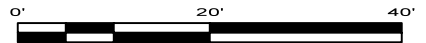
A-E 7.08(3)(c)(d) Plan view of corner with references to at least 4 witness monuments.

BEARINGS LISTED TO THE NEAREST  
SECOND ARE REFERENCED TO WISCONSIN  
COUNTY COORDINATE REFERENCE  
SYSTEM - ONEIDA COUNTY ZONE.  
ALL OTHER BEARINGS ARE MAGNETIC.



## LEGEND

- This Corner
- 0.75" diameter X 18" long iron rod, set
- Vinyl t-post, set ±1 foot east of corner



A-E 7.08(3)(e) 1985 Surveyor set an Oneida County aluminum capped monument, subsequent surveyors found the same, as did I in 2023.

A-E 7.08(3)(f) I accept this monument as a FOUND PERPETUATED LOCATION of the corner.

A-E 7.08(3)(g)(h) This corner was not determined through lost-corner-proportionate methods.

A-E 7.08(3)(i) I, Jeffrey L. DeMuth, Professional Land Surveyor No. S-2656, hereby certify that the corner location on this record was determined by me or under my direction and control, and that this U.S. Public Land Survey Monument Record is correct and complete to the best of my knowledge, and belief.



SIGNATURE

December 29, 2023

DATE

43811270007