

U.S. PUBLIC LAND SURVEY MONUMENT RECORD

Note: This form is intended and designed to fulfill all requirements of Wisconsin Administrative Code, Chapter A-E 5.02, U.S. Public Land Survey Monument Record (3) (a) (b) (c) (d) (e) (f) (g) (h) (i). An additional sheet may be added if necessary to conform with said requirements.

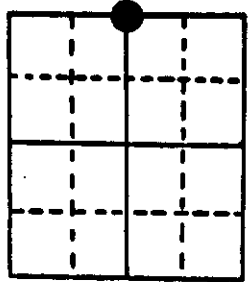
(a) Corner location: Township 38 North

N 1/4

Range 11 East

Town/City/Village OF THREE LAKES

County OF ONEIDA

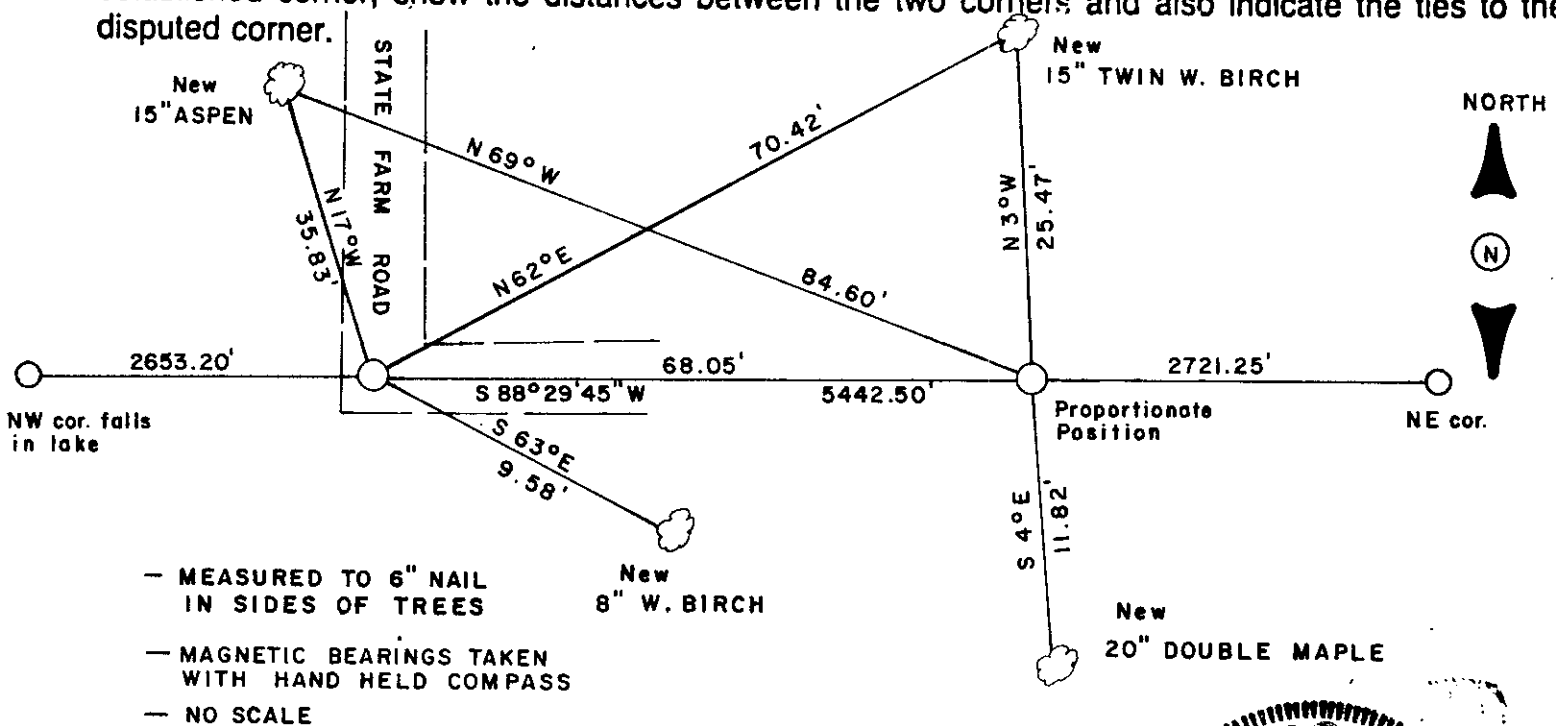


Section 34

(b) (f) (g) (h) Description of monument found at this corner and if it was accepted, state all evidence (material, testimonial, occupational, plats, records, other monuments) used as a basis for accepting. If not accepted or if nothing was found, state evidence used as basis for establishing location. If reestablished through lost corner proportionate methods, indicate all monuments, distances and directions used to establish.

- William E. Daugherty established original corner @ 39.96 chains west of NE corner. No trees for B.T.s.
- 1918 D.H. Vaughn measured from NW corner ... 40.00 leave field...68.00 wet bog... 80.41 NE corner sets $\frac{1}{4}$ @ $40.20\frac{1}{2}$ E of NW corner., nothing for bearings.
- 1950 F.R. Wincentsen indicates an iron pipe at the $N\frac{1}{4}$. It appears he set this pipe @ 40.20 chains E of NW corner. B.T.s; Aspen 12 N 32 E 69lks.
- At this corner I found a pipe laying alongside a tree, there has been some grading around the position and someone must dug the pipe out. I did not find a bearing tree that would have satisfied F.R.W.s position. When I measured between the section corners I discovered there may have been an error in Vaughns recording of , or measuring of the distance between the section corners. I set a 1" iron pipe at F.R.W.s position which is close to Vaughns, and also @ the proportion distance between the sec. cor. See Genisot map # 7600 for details on the North line. I witnessed the corners as shown below.

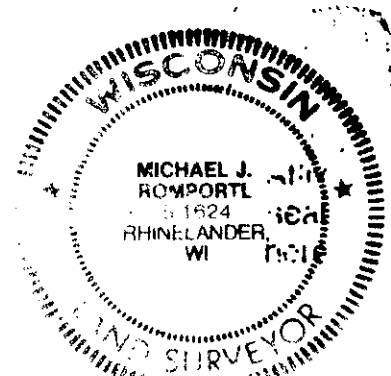
(c) (d) (e) Plan view of corner with ties to at least 4 witness monuments. If in disagreement with previously established corner, show the distances between the two corners and also indicate the ties to the disputed corner.



- MEASURED TO 6" NAIL IN SIDES OF TREES
- MAGNETIC BEARINGS TAKEN WITH HAND HELD COMPASS
- NO SCALE

(i) I, MICHAEL J. ROMPORTL R.L.S. 1624
 (type or print name) certify that the corner location on this record was determined by me or under my direction and control and that this U.S. Public Land Survey Monument Record is correct and complete to the best of my knowledge and belief.

Michael J. Romportl MAY 31, 1985
 Signature Date
 GENISOT & ASSOCIATES INC. - 1512 EAGLE ST. - RHINELANDER, WIS.



Index No. 1-15

3811270020

capped monument stamped to identify corner. Made new B.T.'s and set plastic sign post 3.0' south of corner.

REGISTER OF DEEDS OFFICE
ONEIDA COUNTY, WIS.
FILED
DEC 17 1999
At _____ O'Clock _____ M
THOMAS J. LEIGHTON