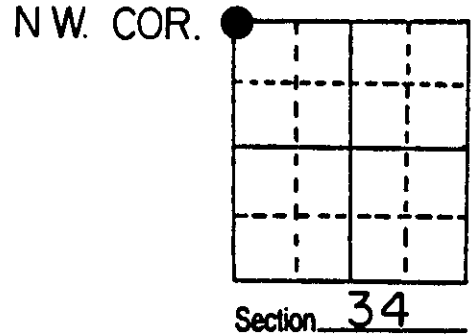


# U.S. PUBLIC LAND SURVEY MONUMENT RECORD

**Note:** This form is intended and designed to fulfill all requirements of Wisconsin Administrative Code, Chapter A-E 5.02, U.S. Public Land Survey Monument Record (3) (a) (b) (c) (d) (e) (f) (g) (h) (i). An additional sheet may be added if necessary to conform with said requirements.

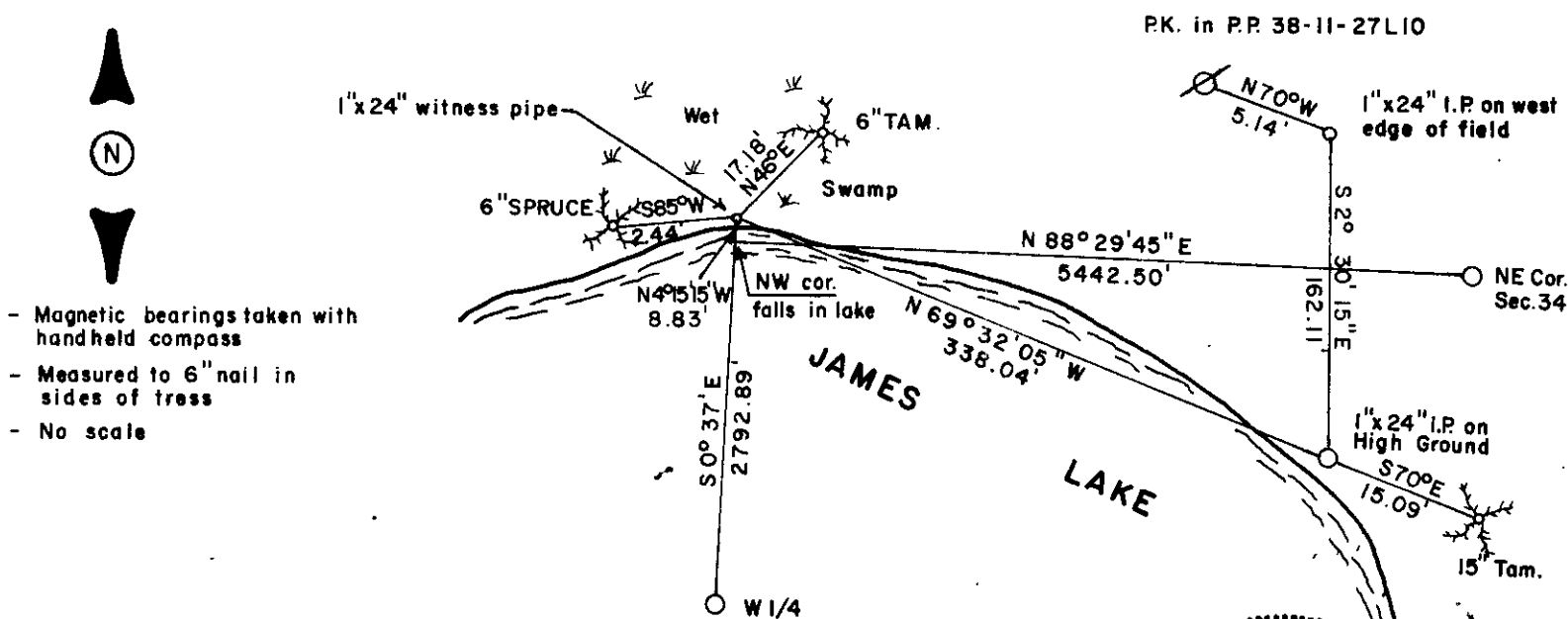
(a) Corner location: Township 38 North  
 Range 11 East/West  
 Town/City/Village THREE LAKES  
 County ONEIDA



(b) (f) (g) (h) Description of monument found at this corner and if it was accepted, state all evidence (material, testimonial, occupational, plats, records, other monuments) used as a basis for accepting. If not accepted or if nothing was found, state evidence used as basis for establishing location. If reestablished through lost corner proportionate methods, indicate all monuments, distances and directions used to establish.

- 1859 William E. Daugherty established original corner @ 80 chains north of SW corner, just over lake, B.T.s; Spruce 6 N 37 E 39, Spruce 6 N 27 W 77.
- 1918 D.H. Vaughn states in his notes he found post which he believes is the original. Found trees with old marks. He set a new post at NW cor.
- 1950 F.R. Wincentzen indicates a 4"x4" post(D.H.V.) at the corner position.
- 1979 Genisot & Associates from Eagle River found a wood post at the corner position while working in Sec. 28.
- At the corner position I found that the water level was high and the wood post could not be recovered so I established the position from Eagle Rivers control and checked it with the info. of F.R.W. measurements of 1950 and found that it checked closely with his data, so I accepted the wood post location for the cor. The corner falls in the lake due to erosion as indicated by the dead trees and stumps standing in the water, which may be due to the activity of the Cran. Bog in the area. I witnessed the corner as shown below.

(c) (d) (e) Plan view of corner with ties to at least 4 witness monuments. If in disagreement with previously established corner, show the distances between the two corners and also indicate the ties to the disputed corner.

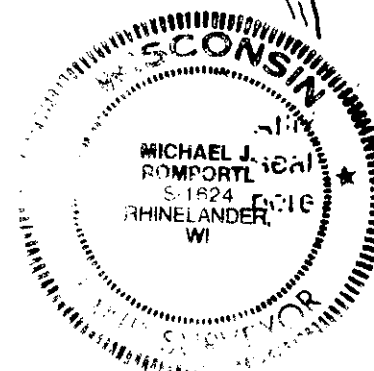


- Magnetic bearings taken with handheld compass
- Measured to 6" nail in sides of tress
- No scale

(i) I, MICHAEL J. ROMPORTL R.L.S. 1624  
 (type or print name) certify that the corner location on this record was determined by me or under my direction and control and that this U.S. Public Land Survey Monument Record is correct and complete to the best of my knowledge and belief.

Michael J. Romportl MAY 31, 1985  
 Signature Date

GENISOT & ASSOCIATES INC. - 1512 EAGLE ST. - RHINELANDER, WIS.



Index No. V-13

3811280000