

U.S. PUBLIC LAND SURVEY MONUMENT RECORD

REGISTER OF DEEDS OFFICE
ONEIDA COUNTY
FILED

JUN 01 2017

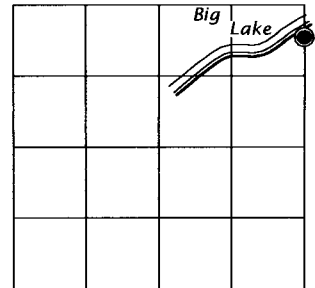
Note: This form is intended and designed to fulfill all requirements of the Wisconsin Administrative Code, Chapter A-E 7.08 U.S. Public Land Monument Record (3)(a)(b)(c)(d)(e)(f)(g)(h)(i). An additional sheet may be added if necessary to conform with said requirements.

(a) CORNER LOCATION: WISCRS - Oneida County
 M. C. east line of Section 28 North: 206588.160 USft
 Township 38 North East: 340571.351 USft
 Range 11 East Latitude: 45° 45' 06.50325" N
 Town of Three Lakes Longitude: 89° 06' 40.79322" W
 County of Oneida Datum: NAD 83(2011)
 GNSS Method: RTK - Offset
 GNSS Control: WISCRS VRS
 Record North: 206590.148 USft
 Record East: 340569.222 USft
 Record Datum: NAD 83(1991)

AT _____ O'CLOCK _____ M
 KYLE J. FRANSON
 REGISTER OF DEEDS

(RECORDING AREA)

SECTION 28



(b) HISTORY OF ORIGINAL CORNER ESTABLISHMENT

Original Surveyor: William E. Dougherty
 Date of Survey: Commenced August 30, 1859
 Completed September 5, 1859
 Original B.T.'S: Cedar 10" S 22°W, 31 lks.
 Cedar 10" N 42°E 30 lks.

(f)(g)(h) DESCRIPTION OF MONUMENT FOUND AT THIS CORNER AND IF IT WAS ACCEPTED, STATE ALL EVIDENCE (MATERIAL, TESTIMONIAL, OCCUPATIONAL, PLATS, RECORD, OTHER MONUMENTS) USED AS A BASIS FOR ESTABLISHING LOCATION. IF NOT ACCEPTED OR IF NOTHING WAS FOUND, STATE EVIDENCE USED AS BASIS FOR ESTABLISHING LOCATION. IF REESTABLISHED THROUGH LOST CORNER PROPORTIONATE METHODS, INDICATE ALL MONUMENTS, DISTANCES AND DIRECTIONS USED TO ESTABLISH. INDICATE TYPE OF MONUMENT AND SIGN POST FOUND OR SET.

January 24, 1921 - ? Vaughan County Surveyor - Survey notes for survey in Section 27, filed in county surveyor's office "Old Field Book 73, page 107, projected line from SW section corner through the 1/4 corner and set line stakes to the lake. The MC gone, lake is flooded by dam.

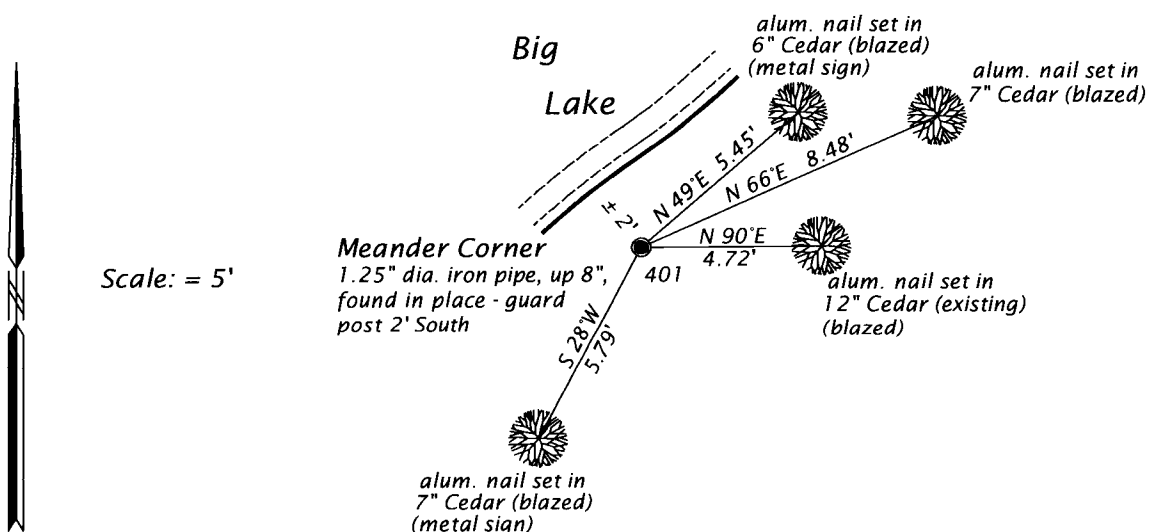
November 22, 1989 - Thomas A. Boettcher, RLS No. 1763, Eagle Landmark Surveying, Inc., survey in Section 28, DWG No. 8898, filed in county surveyor's office as B2107, legends M.C. 1" iron pipe found in place".

August 30, 1990 - Kip W. Soder, RLS No. 1731, Soder Surveying, survey in Section 27, filed in county surveyor's office as B2186, legends M.C. found in place.

March 29, 2017 - James D. Rein, PLS No. 1234, we recovered a 1.25" dia. iron pipe in ice ridge 2 feet from water. We did not replace the iron pipe because it is embeded in a root mass and stable. We made reference ties as shown in plan.

The coordinate value shown has been verified by at least one of the following methods: 1) comparison to a previously GPS determined published value; 2) the value is the average of two or more GPS observations at a markedly different time; 3) one or more distances were measured back to the GPS observed corner from temporary GPS observed offset locations.

(c)(d)(e) PLAN VIEW OF CORNER WITH TIES TO AT LEAST 4 WITNESS MONUMENTS. IF IN DISAGREEMENT WITH PREVIOUSLY ESTABLISHED CORNER, SHOW THE DISTANCE BETWEEN THE TWO CORNERS AND ALSO INDICATE THE TIES TO THE DISPUTED CORNER.



(i) I, JAMES D. REIN, PROFESSIONAL LAND SURVEYOR NO. S-1234 HEREBY CERTIFY THAT THE CORNER LOCATION ON THIS RECORD WAS DETERMINED BY ME OR UNDER MY DIRECTION AND CONTROL AND THAT THIS U.S. PUBLIC LAND SURVEY MONUMENT RECORD IS CORRECT AND COMPLETE TO THE BEST OF MY KNOWLEDGE AND BELIEF.



[Handwritten Signature]
 SIGNATURE

5-24-17
 DATE

INDEX NO. RS - 13
 3811283100