

State of Wisconsin

County of Oreida } ss

I James L. Will do hereby certify that on the 30th day of November, 1989, I found evidence of the Southeast Section corner of Section 29 Township 38 North, Range 11 East, Fourth Principal Meridian, as described hereon; and that from this evidence I established a new monument and accessories as described hereon to perpetuate the original location of this corner.

Resident witnesses:

Thomas A. Boettcher

U. S. Public Land Survey Monument Record

Index No. V-9

History of original corner establishment:

Original corner was established during the course of the subdivision of T 38 N, R 11 E which was done in Aug. & Sept., 1859 by Wm. E. Daugherty, Deputy Surveyor.

Original B.T.'s:

- 7" Tamarack N 75° E 25 lks
- 6" Tamarack S 35° W 30 lks

Description of corner evidence found:

Found wood post established by Robert E. Pandow in 1957 as the corner.

Found bearing tree stump:

- 7" Stump N 80° W 17.40 feet (20' high tall stump)
- 8" Stump N 30° E 23.1 feet (12" high rotted stump)

Description of monument and accessories I established to perpetuate the original location of this corner.

Replaced the wood post with an Oreida County aluminum monument 60" long.

Made the following new bearing trees measured to a nail in the side of the trees:

- 3" Tamarack S 88° W 15.04'
- 3" Tamarack N 60° W 15.88'
- 3" Tamarack S 40° E 6.45'
- 8" Tamarack S 2° W 44.87'

Made wood post and set northeast of the corner.

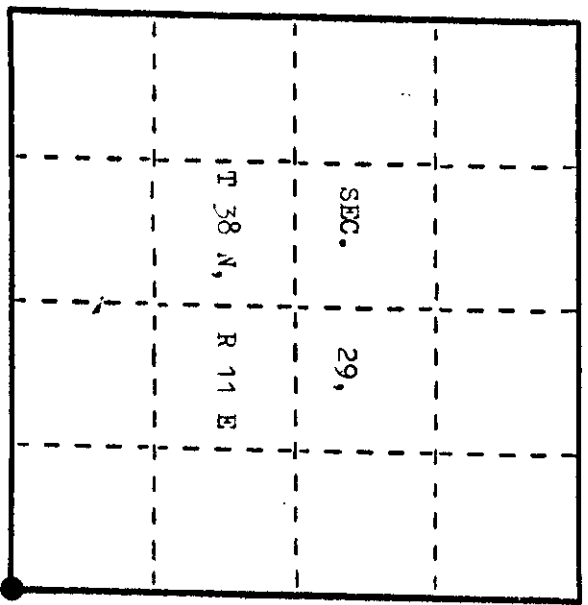
Dated at Eagle River, Wis., this 11th day of December, 1989

Signature James L. Will Title Registered Land Surveyor Registration No. S-1410  
(County Surveyor, Registered Land Surveyor, or other duly authorized official)

Office of Register of Deeds, County of Oreida, I hereby certify that the within instrument was filed in this office for record on the 11th day of December, 1989 at 11 o'clock A. M.

(Register of Deeds)

● - Corner monument restored.



3811290000

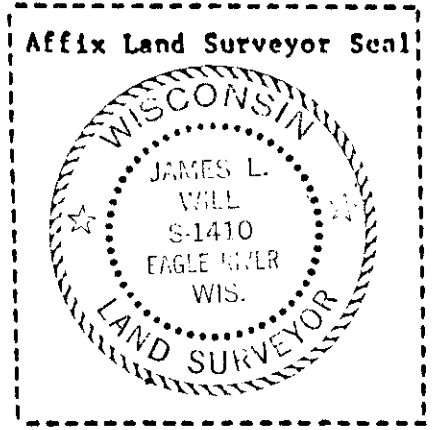
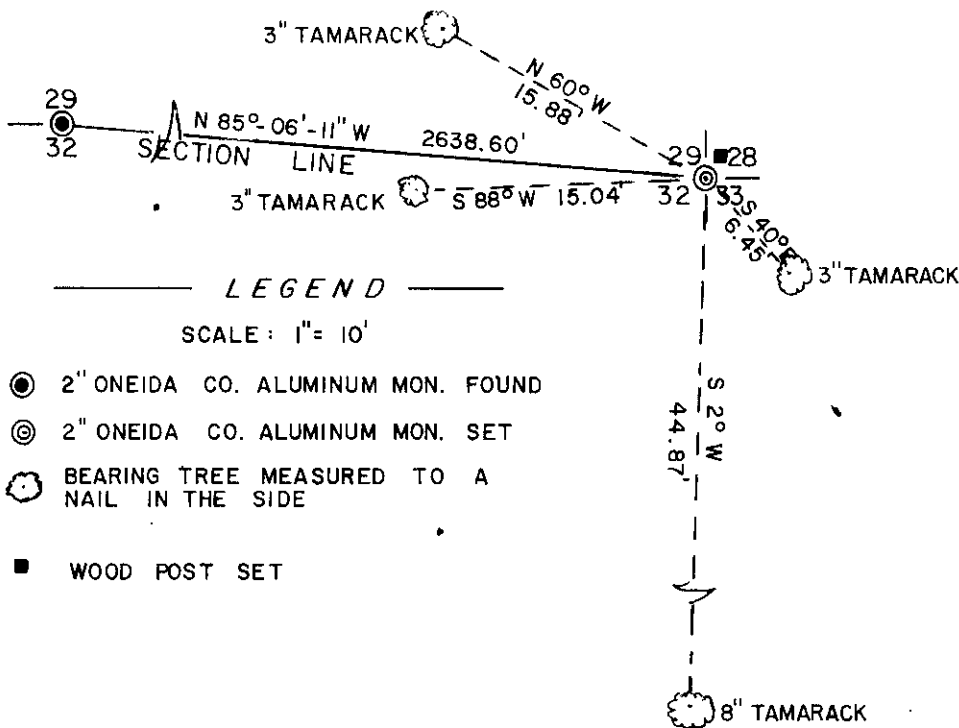
Describe any material discrepancy between the location of the corner as restored or reestablished and the location of that corner as previously restored or reestablished by distance and direction. Show the discrepancy on the plan view drawing under (d), above. Show the distances between the corner as previously restored or reestablished and (1) the corner as restored or reestablished, and (2) to at least 2 of the witness monuments shown on the drawing in (d), above.

None. See sketch below.

Was the corner restored through acceptance of (1) an obliterated evidence location, or, (2) a found perpetuated location?

Corner was restored through acceptance of a found perpetuated location.

Was the corner reestablished through lost corner proportionate methods? If so, show the method, including the directions and distances to other public land survey corners used as evidence or used for proportioning in determining the corner location?



I, James L. Will, R.L.S. # 1410  
 (type or print name) certify that the corner location shown on this record was determined by me or under my direction and control and that this U.S. Public Land Survey Monument Record is correct and complete to the best of my knowledge and belief.

*James L. Will*  
 Signature

December 11, 1989  
 Date