

This form is intended to fulfill the requirements of Chapter A-E7.08 (3)(a) thru (i) U.S. Public Land Survey Monument Location Record, Wisconsin Administrative Code. Use the reverse side of form for continuation.

U.S. PUBLIC LAND SURVEY MONUMENT LOCATION RECORD

USPLS CORNER: NORTH WITNESS MC SECTION: 28 TOWNSHIP: 38 NORTH RANGE: 11 EAST
 NAME OF WATERWAY FOR M.C. CORNER : BIG LAKE SECTION LINE: WEST
 (CITY)(VILLAGE)(TOWN) OF: THREE LAKES COUNTY OF: ONEIDA

Description of monument found or placed and all other evidence used as the basis for monument location; including monuments and measurements required if the corner location was reestablished by lost corner proportionate methods. Also indicate name of the original surveyor, original survey date and the corner monument, bearing trees, witness or other reference monuments established, including measured bearing and distance ties, from available survey records.

Assisted by adjoining owner Robert Jensen, I found and accepted an old 1" dia. iron pipe 2" above grade with an old 3/4" dia. iron pipe along South side at this record Witness MC location. I carefully pulled the iron pipes and drove a standard 2" dia. by 30" long aluminum pipe monument with stamped Oneida County cap 2" above grade into the plumb soil cavity left by the old iron pipes; then I cleared thickly grown small pine limbs around the monument and along lanes to selected BTs.

The corner is 14.5' West of existing lake shoreline bearing S40°W. I left old iron pipe monuments flat on grade nearby.

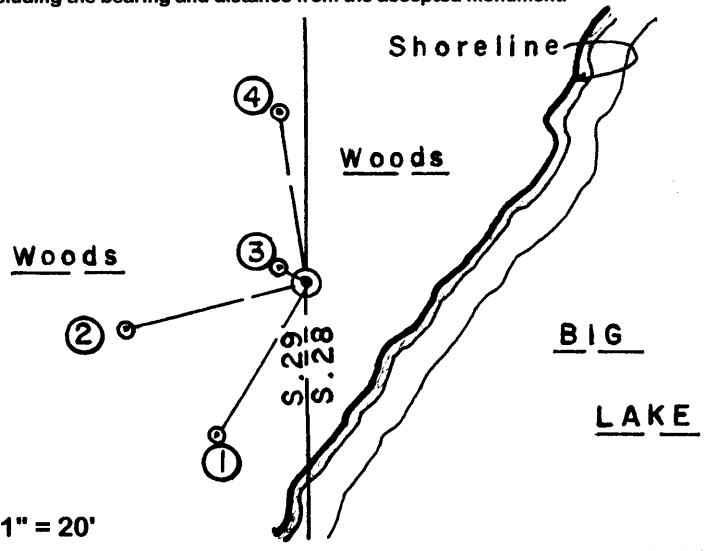
In August-September 1859, William E. Daugherty/GLO did not set a wood post as an MC as the entire West line of Section 28 was noted upon upland, as Big Lake was not impounded at the time by the daming of Eagle River.

In November 1967, Forrest Wincentsen/RLS 155 noted an iron pipe at this Witness MC and an 8" Bw BT S72°W 6.2', now found as a low rotted stump S80°W 6.5'+/-, per Pages 222 & 223 of Wincentsens Book 1 in Oneida County survey records.

This corner also noted as a 1" iron pipe per plats of survey filed as B-1053, B-2382, B-2459, B-2460 and B-2706 in Oneida County survey records from 1979 to 1992.

This recovery completed August 4, 2004 and witnessed by adjoining owner Robert Jensen.

Plan view map of monument location with bearing and distance ties to a minimum of four(4) described witness or reference monuments of concrete, natural stone, iron, live bearing trees or equivalent material. If applicable, also show a minimum of two(2) bearing and distance ties to any other monument found and not accepted; including the bearing and distance from the accepted monument.



WITNESS MONUMENT TIES:

- ① New 10.5" Bw BT S30°W 18.75'.
- ② New 15" West trunk of a double Pw BT S75°W 19.22'.
- ③ New 10" Fir BT N60°W 3.10'.
- ④ New 8.5" Fir BT N10°W 18.32'.

I set a standard white poly 'T' marker post 6" East of the corner monument.
 I flagged the monument, 'T' post and all new BTs blaze orange.

SCALE: 1" = 20'

Unless otherwise indicated, all bearing tree ties are to a .25" dia. by 2.5" long PK nail with a 1.25" dia. steel washer driven into unblazed right face and a .25" dia. by 2.5" long PK nail with a 2" dia. steel washer stamped BT is also driven into unblazed face of bearing tree at DBH; the basis for measured bearings is by compass to nearest degree and all tie distances are measured horizontal by steel tape corrected to nearest 1/100th feet at standard temperature of 68° F.

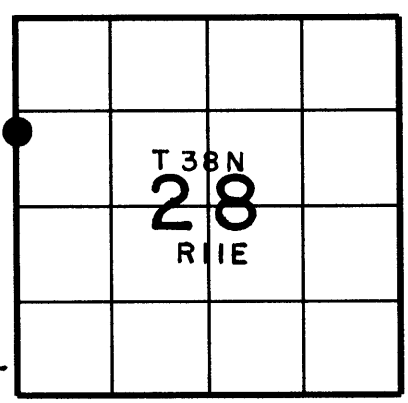
RLS SEAL:



LAND SURVEYOR CERTIFICATE:

I, William C. Rohde, hereby certify that I am duly licensed as a Professional Land Surveyor in the State of Wisconsin; that this USPLS monument location was determined by me and/or under my direct supervision and control; and that this U.S. Public Land Survey Monument Location Record is true and correct to the best of my knowledge and belief.

Signed: *William C. Rohde*
 William C. Rohde RLS 841



SECTION LOCATION MAP
 INDEX NO. S-T 9

Date Signed: September 4, 2004

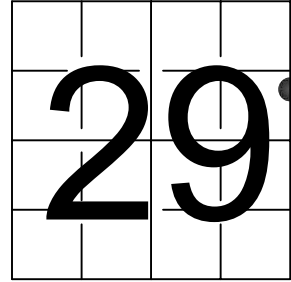
3811292700

U S PUBLIC LAND SURVEY MONUMENT RECORD

NOTE: This form is intended and designed to fulfill all requirements of Wisconsin Administrative Code, Chapter A-E 7.08 U.S. Public Land Survey Monument Record (3) (a-i)

A-E 7.08(3)(a) Identity of corner:
MEANDER CORNER EAST LINE OF
SECTION 29, TOWNSHIP 38 NORTH,
RANGE 11 EAST OF THE 4TH PM,
TOWN OF THREE LAKES,
COUNTY OF ONEIDA

WISCRS - ONEIDA COUNTY
N: 205,952.654 USft (XXX,XXX.XXX)
E: 335,364.142 USft (XXX,XXX.XXX)
Datum: NAD83 (2011)
GNSS Method RTK
GNSS Control WISCRS VRS



The coordinate value shown has been verified by the average of two or more GPS observations at a markedly different time. Coordinates shown in parenthesis are previously published values.

A-E 7.08(3)(b)

Original Surveyor: William E. Daugherty - August 30 - September 5, 1859

Original Accessories:
NONE

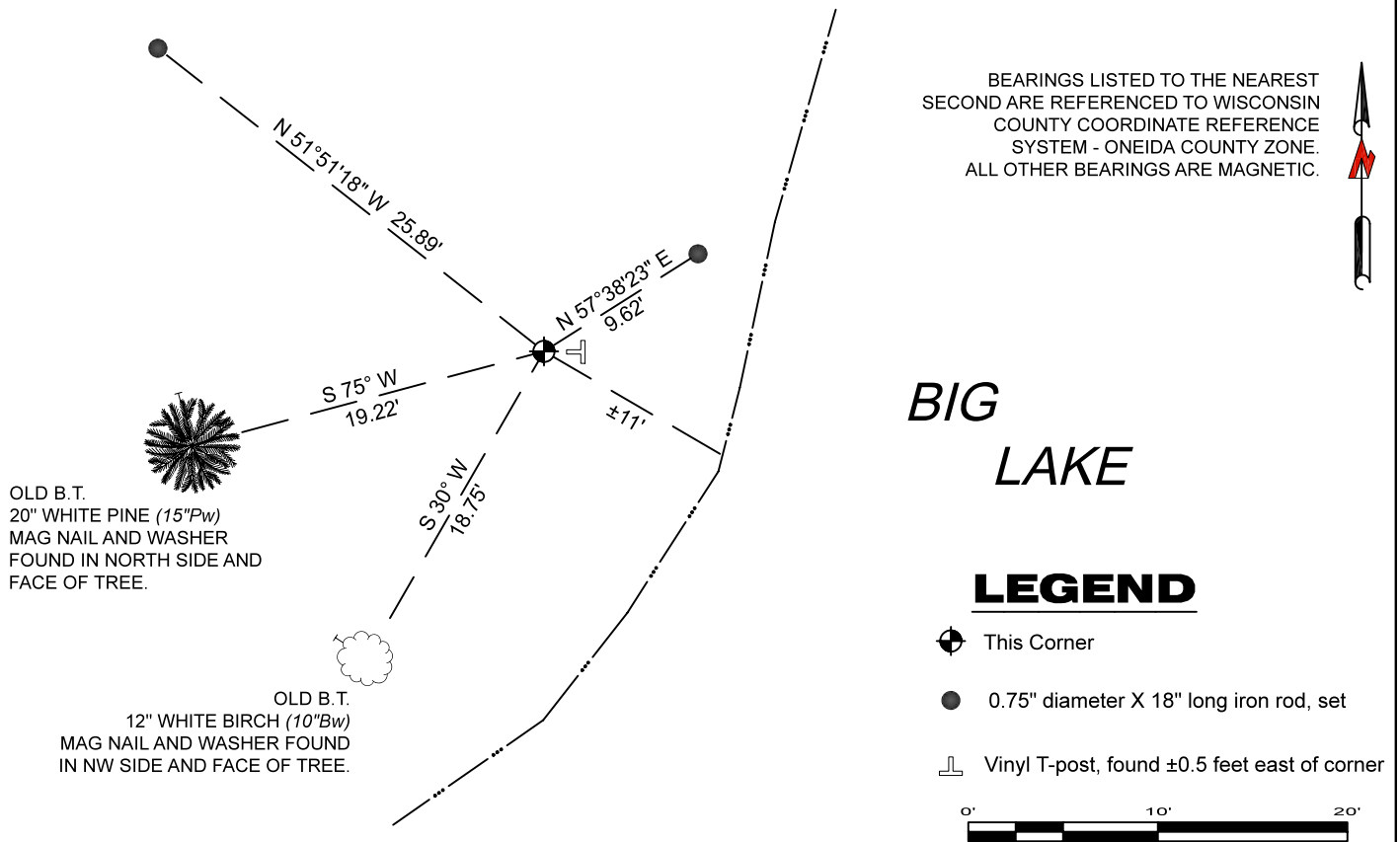
See previous U.S. Public Land Survey Monument Location Record - S - T 9 - September 4, 2004 - Surveyor 0841 - William C. Rohde - THENCE:

August 3, 2022 - Surveyor 1731 - Kip W. Soder - indicates this position as "Oneida County aluminum capped monument found" on Oneida County Map #A3958.

November 18, 2022 - Surveyor 1763 - Thomas A. Boettcher - indicates this position as "Oneida County aluminum cap monument found" on Oneida County Map #A3994.

December 28, 2023 - I found an Oneida County aluminum monument, being 2.25" diameter aluminum pipe with a 3.25" diameter aluminum cap stamped to identify the corner location. The monument is ±11 feet from the shoreline, and is flush with grade. I also found 2 of Rohde's bearing trees standing and in good condition, and established 2 new reference monuments as shown below.

A-E 7.08(3)(c)(d) Plan view of corner with references to at least 4 witness monuments.

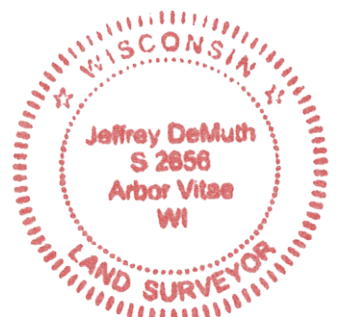


A-E 7.08(3)(e) 2004 Surveyor set aluminum pipe monument with stamped Oneida County cap. Subsequent Surveyors found the same, as did I in 2023.

A-E 7.08(3)(f) I accept this monument as a FOUND PERPETUATED LOCATION of the corner.

A-E 7.08(3)(g)(h) This corner was not determined through lost-corner-proportionate methods.

A-E 7.08(3)(i) I, Jeffrey L. DeMuth, Professional Land Surveyor No. S-2656, hereby certify that the corner location on this record was determined by me or under my direction and control, and that this U.S. Public Land Survey Monument Record is correct and complete to the best of my knowledge, and belief.



SIGNATURE

December 29, 2023
DATE