

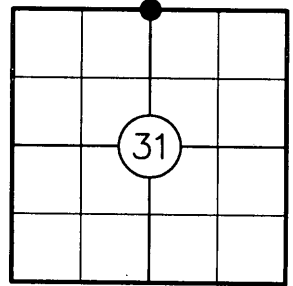
At _____ O'Clock _____ M
THOMAS H. LEIGHTON
REGISTERED SURVEYOR

U.S. PUBLIC LAND SURVEY MONUMENT RECORD

NOTE: THIS FORM IS INTENDED AND DESIGNED TO FULFILL ALL REQUIREMENTS OF WISCONSIN ADMINISTRATIVE CODE CHAPTER A-E 7.08 U.S. PUBLIC LAND SURVEY MONUMENT RECORD (3) (a)(b)(c)(d)(e)(f)(g)(h)(i). AN ADDITIONAL SHEET MAY BE ADDED IF NECESSARY TO CONFIRM WITH SAID REQUIREMENTS.

(a) CORNER LOCATION:

N 1/4 CORNER OF SECTION 31
TOWNSHIP 38 NORTH
RANGE 11 EAST
TOWN OF THREE LAKES
ONEIDA COUNTY



(b) HISTORY OF ORIGINAL CORNER:

ORIGINAL SURVEYOR: WILLIAM E. DAUGHERTY
DATE OF SURVEY: AUG./SEPT. 1859

ORIGINAL BEARING TREES: 10" HEMLOCK N10°E, 10 LKS.
8" HEMLOCK S10°E, 5 LKS.

(f)(g)(h) DESCRIPTION OF MONUMENT FOUND AT THIS CORNER AND IF IT WAS ACCEPTED STATE ALL EVIDENCE (MATERIAL, TESTIMONIAL, OCCUPATIONAL, PLATS, RECORDS, OTHER MONUMENTS) USED AS A BASIS FOR ESTABLISHING LOCATION. IF REESTABLISHING THROUGH LOST CORNER PROPORTIONATE METHODS, INDICATE ALL MONUMENTS, DISTANCES, AND DIRECTIONS USED TO ESTABLISH. INDICATE TYPE OF MONUMENT AND SIGN POST FOUND OR SET.

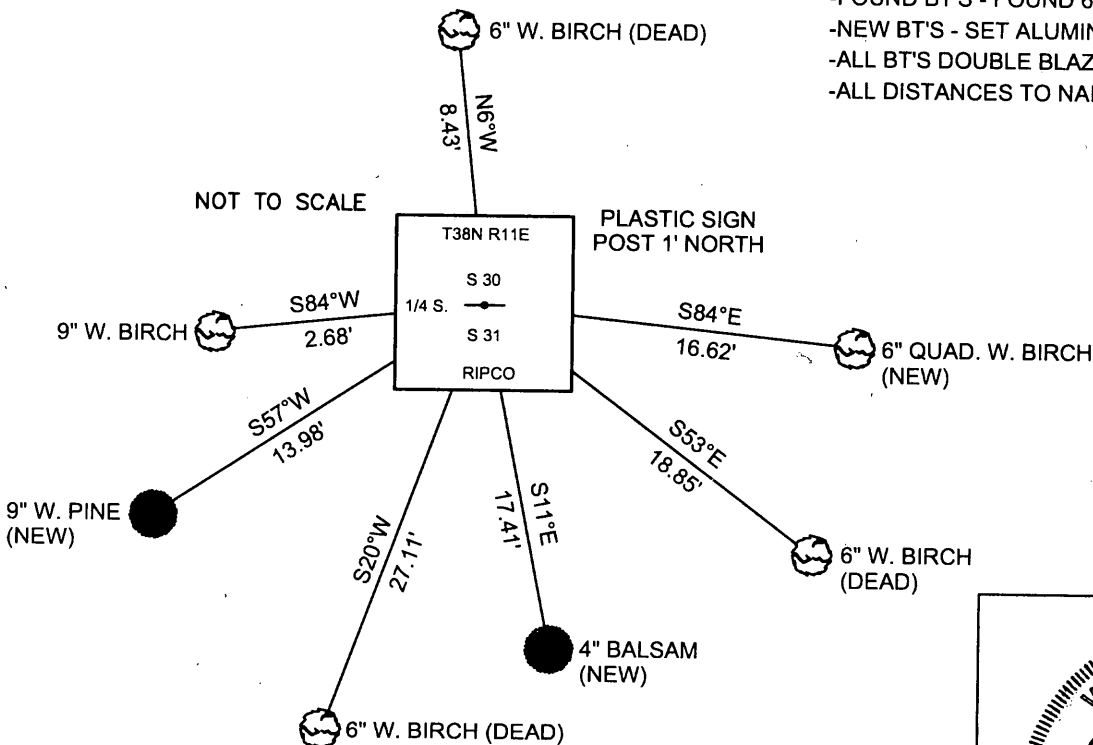
1909: D.H. VAUGHAN'S NOTES STATE HE FOUND N 1/4 POST AND MADE A NEW BT.

RIPCO NOTES (LOFTUS - UNDATED) STATE THEY FOUND VAUGHAN'S 1/4 CORNER AND BT STUMP 40.14 CHAINS WEST OF NE SECTION CORNER. SET NEW POST AND MADE TWO NEW BT'S: Bw 4 S78°W, 4 3/4 LKS & Fb 4 N48°E, 7 LKS.

1995: KIP W. SODER SHOWS A RIPCO IRON PIPE - BRASS CAP MONUMENT FOUND AT THE 1/4 CORNER LOCATION.

2007: I FOUND AND ACCEPTED A 2" DIA IRON PIPE WITH A 4" SQUARE BRASS TABLET. I FOUND FOUR EXISTING BT'S AND MADE THREE NEW BT'S AS SHOWN BELOW.

(c)(d)(e) PLAN VIEW OF CORNER WITH TIES TO AT LEAST FOUR WITNESSES. IF IN DISAGREEMENT WITH PREVIOUSLY ESTABLISHED CORNER, SHOW THE DISTANCES BETWEEN THE TWO CORNERS AND ALSO INDICATE THE TIE TO THE DISPUTED CORNER.



- FOUND BT'S - FOUND 60D SPIKES IN SIDE OF TREE
- NEW BT'S - SET ALUMINUM NAILS IN SIDE OF TREE
- ALL BT'S DOUBLE BLAZED
- ALL DISTANCES TO NAILS

I, JEFFREY D. ANDERSON, REGISTERED LAND SURVEYOR NO. 2697, HEREBY CERTIFY THAT THE CORNER LOCATION ON THIS RECORD WAS REFERENCED BY ME OR UNDER MY DIRECTION AND CONTROL AND THAT THIS U.S. PUBLIC LAND SURVEY MONUMENT RECORD IS COMPLETE TO THE BEST OF MY KNOWLEDGE AND BELIEF.

SIGNATURE Jeffrey D. Anderson DATE 1/25/08



INDEX NO. V-3

3811300020