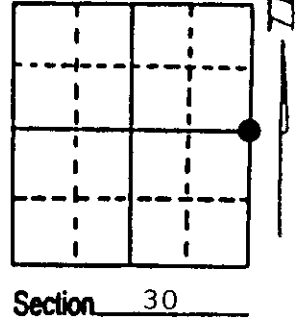
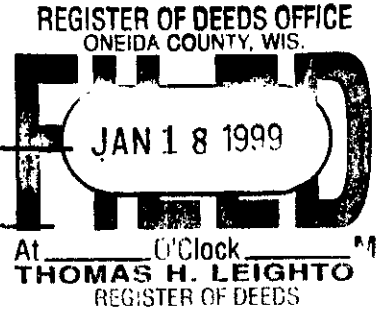


U.S. PUBLIC LAND SURVEY MONUMENT RECORD

Note: This form is intended and designed to fulfill all requirements of Wisconsin Administrative Code, Chapter A-E 7.08 U.S. Public Land Survey Monument Record (3) (a) (b) (c) (d) (e) (f) (g) (h) (i). An additional sheet may be added if necessary to conform with said requirements.

(a) Corner location: Township 38 North
 Range 11 East/West
 Town/City/Village THREE LAKES
 County ONEIDA



(b) (f) (g) (h) Description of monument found at this corner and if it was accepted, state all evidence (material, testimonial, occupational, plats, records, other monuments) used as a basis for accepting. If not accepted or if nothing was found, state evidence used as basis for establishing location. If reestablished through lost corner proportionate methods, indicate all monuments, distances and directions used to establish. Indicate type of monument found or set and sign post.

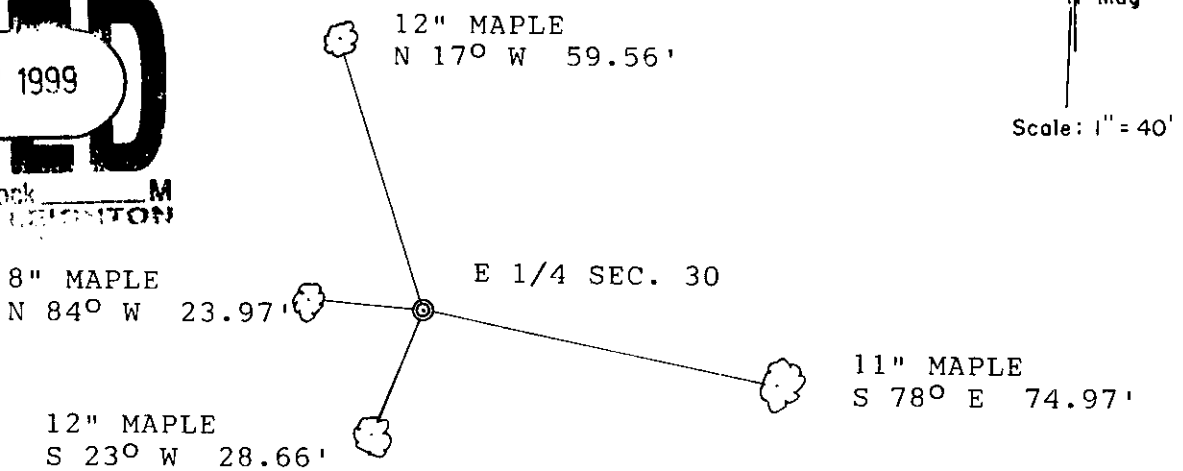
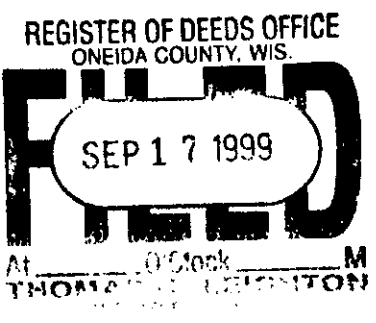
1859- DAUGHERTY SET WOOD POST AT 40 CH.
 ORIGINAL B.T.'s 36" HEMLOCK N 50° E 7 lks.
 10" HEMLOCK N 40° W 10 lks.

1909- VAUGHN FINDS EVIDENCE OF DAUGHERTY'S CORNER AT 38.15 CH.

1958- BRANHAM FINDS VAUGHN'S CORNER AND USES VAUGHN'S EVIDENCE TO RUN SECTION LINES. CANNOT RECOVER ANY EVIDENCE OF ORIGINAL B.T.'s.

FOUND IRON PIPE ASSUMED TO BE $E\frac{1}{4}$, 5' WEST OF $\frac{1}{2}$ OF OLD LOGGING ROAD. PIPE LOCATION CHECKS WITH VAUGHN'S CALLS TO THE SE SECTION CORNER, AND ALSO CHECKS WITH VAUGHN'S MEASUREMENTS TO THE $\frac{1}{2}$ OF C & NW RAILROAD TO THE WEST. CANNOT LOCATE B.T.'s AS AREA HAS BEEN REPEATEDLY LOGGED. IRON PIPE ALSO CHECKS WITH DEEDED CALLS TO THE TOWN ROAD TO THE SOUTH. REPLACED IRON PIPE WITH 2½" X 36" ONEIDA COUNTY ALUMINUM CAPPED (OVER)

(c) (d) (e) Plan view of corner with ties to at least 4 witness monuments. If in disagreement with previously established corner, show the distances between the two corners and also indicate the ties to the disputed corner.



NOTE: ALL MEASUREMENTS ARE TO ALUMINUM NAIL IN SIDE OF TREE.

(i) I, KIP W. SODER S-1731
 (type or print name) certify that the corner location on this record was determined by me or under my direction and control and that this U.S. Public Land Survey Monument Record is correct and complete to the best of my knowledge and belief.
Kip W. Soder Jan. 11, 1999
 Signature Date



3811302000
 Stamp

Index No. T 5

MONUMENT STAMPED TO IDENTIFY CORNER. STEEL SIGN POST 2' WEST OF CORNER.

This form is intended to fulfill the requirements of Chapter A-E 7.08 (3)(a) thru (i) U.S. Public Land Survey Monument Location Record, Wisconsin Administrative Code. Use the reverse side of form for continuation.

U.S. PUBLIC LAND SURVEY MONUMENT LOCATION RECORD

Recorders Data

USPLS CORNER: West 1/4 Corner SECTION: 29 TOWNSHIP: 38 NORTH RANGE: 11 East

NAME OF WATERWAY FOR M.C. CORNER: N/A SECTION LINE: N/A

(CITY)(VILLAGE)(TOWN) OF: Town of Three Lakes COUNTY OF: Oneida

Description of monument found or placed and all other evidence used as the basis for monument location; including monuments and related measurements required if the corner location was reestablished by lost corner proportionate methods. Also indicate name of original surveyor, original survey date and the corner monument, bearing trees, witness or other reference monuments established; including measured bearing and distance ties, from available records.

Found and accepted an undisturbed standard 2" dia. aluminum pipe monument with Oneida County cap 3" above grade and stamped in 1998 by Kip W. Soder, RLS 1731.

In September 1859, William E. Daugherty/GLO set a wood post as the original corner and marked OBTs: a 36" Hemlock N50°E 7 links and a 10" Hemlock N40°W 10 links, all of which are now obliterated.

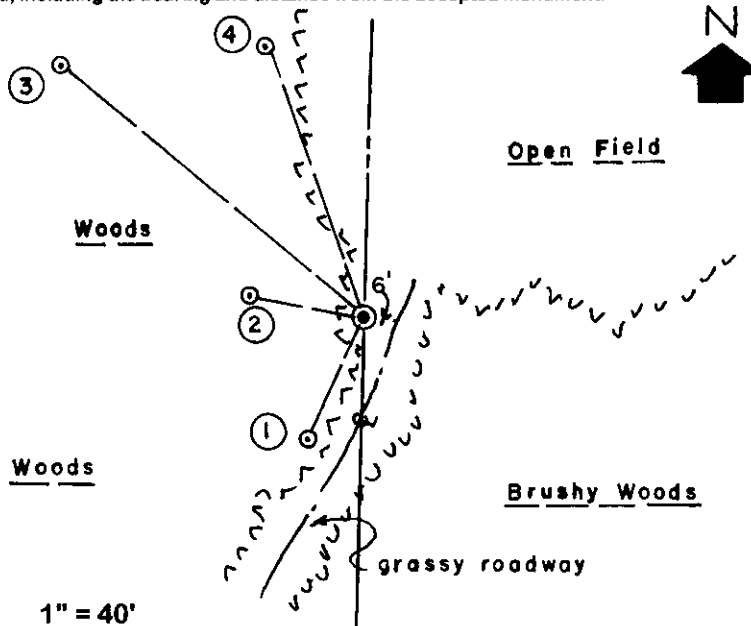
In March 1995, Kip Soder notes a standard Oneida County aluminum monument at this corner per map legend on his Plat of Survey filed as B-3142 in Oneida County survey records; however, he did not stamp the monument cap until 1998.

I only found three(3) BTs marked by Kip Soder at the corner so I selected and marked a new 4th BT as noted below. All of the older BTs by Soder have an open upper and lower face blaze painted yellow and a 20d nail set in left face at root crown as tie point.

I also found a white painted steel 'T' fence post with red top N70°W 16" and set a standard white poly 'T' marker post 6" East of the corner monument. Corner is about 200' North of a locked gate across an existing gravel roadway running South and NW and about 6' West of the center of an unimproved grassy roadway running northerly from the gate.

This recovery completed July 27, 1999; there were no direct witnesses.

Plan view map of monument location with bearing and distance ties to a minimum of four(4) described witness or reference monuments of concrete, natural stone, iron, live bearing trees or equivalent material. If applicable, also show a minimum of two(2) bearing and distance ties to any other monument found and not accepted; including the bearing and distance from the accepted monument.



WITNESS MONUMENT TIES:

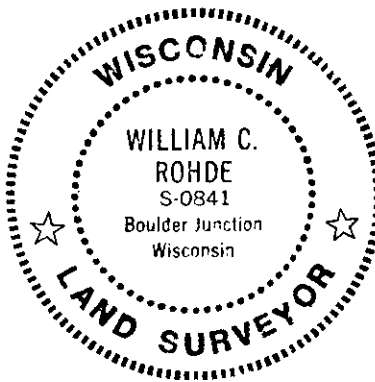
- ① Older BT 14" Mr S24°W 28.60'.
- ② Older BT 9" Mr N80°W 23.75'.
- ③ New BT 12" Mr N51°W 81.56'.
- ④ Older BT 12" Mr N20°W 59.40'.

Note: See above history for older BT markings and corner marker posts found or set.

SCALE: 1" = 40'

Unless otherwise indicated, all bearing tree ties are to a .25" dia. by 2.5" long PK nail with a 1.25" dia. steel washer driven into unblazed right face and a .25" dia. by 2.5" long PK nail with a 2" dia. steel washer stamped BT is also driven into unblazed face of bearing tree at DBH; the basis for measured bearings is by compass to nearest degree and all tie distances are measured horizontal by steel tape corrected to nearest 1/100th feet at standard temperature of 68° F.

RLS SEAL:



LAND SURVEYOR CERTIFICATE:

I, William C. Rohde, hereby certify that I am duly licensed as a Professional Land Surveyor in the State of Wisconsin; that this USPLS monument location was determined by me and/or under my direct supervision and control; and that this U.S. Public Land Survey Monument Location Record is true and correct to the best of my knowledge and belief.

Signed: *William C. Rohde*
William C. Rohde RLS 841

	T 38N		
	29		
	R 11E		

SECTION LOCATION MAP

INDEX NO. T-5

3811302000

U.S. PUBLIC LAND SURVEY MONUMENT RECORD

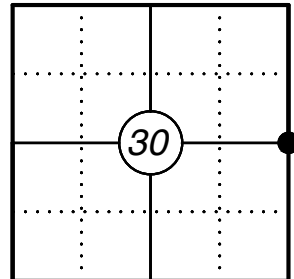
This form is intended and designed to fulfill all requirements of Wisconsin Administrative Code, Chapter A-E 7.08 U.S. Public Land Survey Monument Record (3) (a)(b)(c)(d)(e)(f)(g)(h)(i). An additional sheet may be added if necessary to confirm with said requirements.

Oneida County
Land Information Office
Filed
2/25/2025

(a) Corner Location:

E 1/4 Corner Section 30
Township 38 North
Range 11 East
Township of Three Lakes
County of Oneida

Corner ID: 3811302000



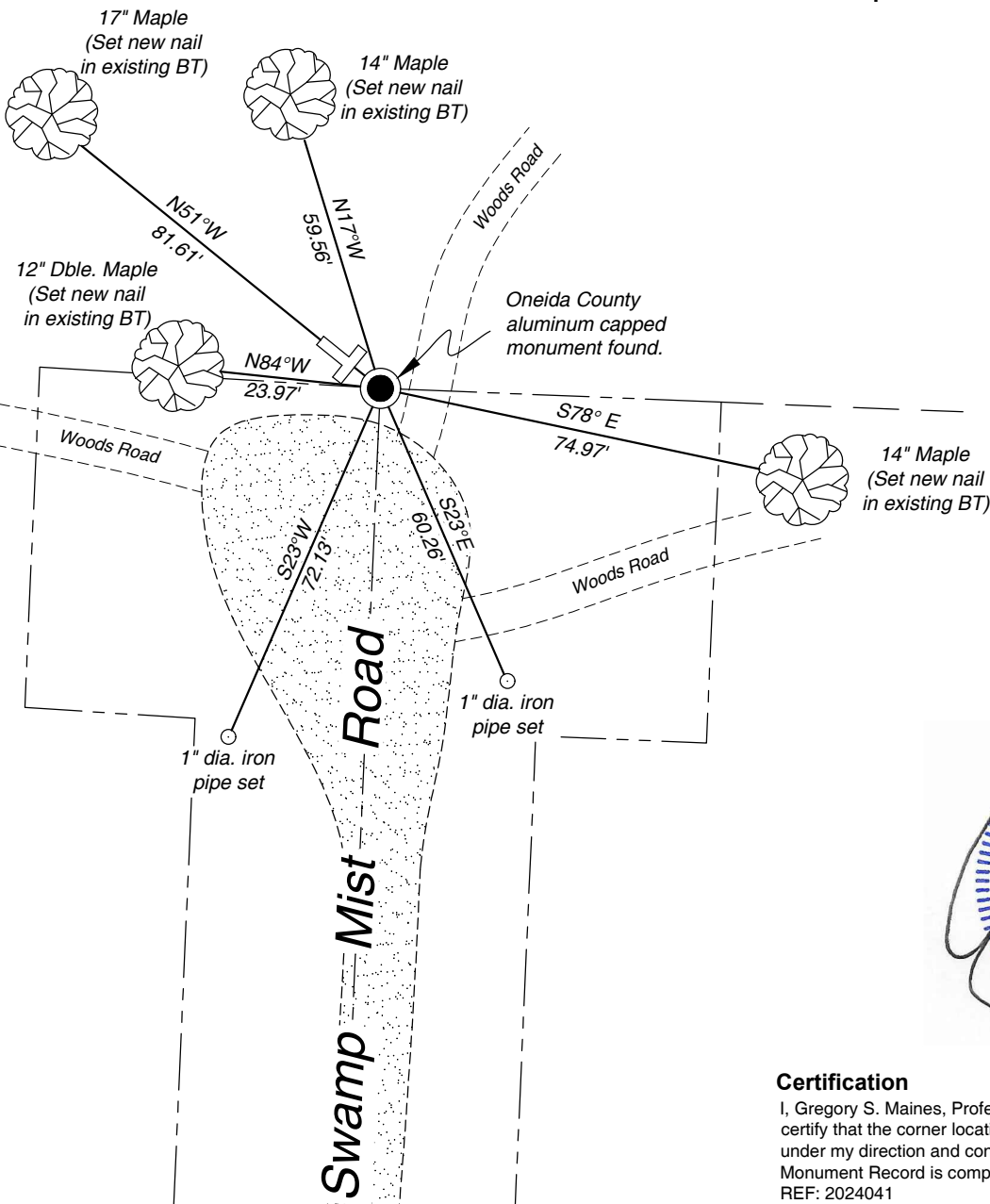
(b) History of Original Corner:

For corner history, see previous U.S. Public Land Survey Monument Record by Kip Soder dated January 11, 1999 and by William Rohde dated July 27, 1999.

(f)(g)(h) Description of monument found at this corner and if it was accepted, state all evidence (material, testimonial, occupational, plats, records, other monuments) used as a basis for establishing location. If reestablishing through lost corner proportionate methods, indicate all monuments, distances, and directions used to establish. Indicate type of monument and sign post found or set.

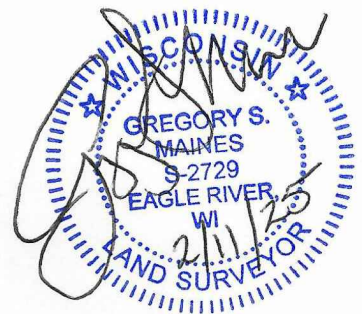
02/11/2025 - I found and accepted an Oneida County aluminum capped monument at the corner location 3" below grade near the end of Swamp Mist Road and witnessed the corner as shown below.

(c)(d)(e) Plan view of corner with ties to at least four witnesses. If in disagreement with previously established corner, show the distances between the two corners and also indicate the tie to the disputed corner.



Magnetic Bearings
Not to scale

* Vinyl "T" post 1.3' northwest of monument.
* Distances to bearing trees are to nail in side.



Certification

I, Gregory S. Maines, Professional Land Surveyor No. 2729, hereby certify that the corner location on this record was referenced by me or under my direction and control and that this U.S. Public Land Survey Monument Record is complete to the best of my knowledge and belief. REF: 2024041

Index No.: