

This form is intended to fulfill requirements of Chapter A-E 7.08 (3)(a) thru (i) U.S. Public Land Survey Monument Location Record, Wisconsin Administrative Code. Use reverse side for geodetic location data and/or other continuation purposes.

# U.S. PUBLIC LAND SURVEY MONUMENT LOCATION RECORD

Recorders Data

USPLS CORNER: NW Section Corner SECTION: 5 TOWNSHIP: 37 NORTH RANGE: 11 EAST

NAME OF WATERWAY FOR M.C. CORNER: N/A SECTION LINE: N/A

~~(CITY/VILLAGE/TOWN)~~ OF: Piehl COUNTY OF: Oneida

Description of monument found or placed and all other evidence used as the basis for monument location; including monuments and related measurements required if the corner location was reestablished by lost corner proportionate methods. Also indicate name of original surveyor, original survey date and the corner monument, bearing trees, witness or other reference monuments established; including measured bearing and distance ties, from available records.

Found and accepted an old 2" dia. iron pipe monument of record with stamped iron pipe cap 16" above surface of bog/marsh; I could not readily remove the iron pipe due to soil anchor rod and rooting below grade, so I carefully plumbed and secured the monument for new ties indicated below. I also found the remains of a 4" square wood corner post, with scribing on all faces near pointed top, lying flat on bog marsh surface NW of iron pipe monument found. I delivered the old wood post as a good display sample same day to Oneida County Land Information office.

In July 1859, Fellows set a wood post as the original section corner and marked OBTs, a 6" Hemlock N15°W 31 links, an 8" Cedar N70°E 20 links, a 10" Cedar S25°E 18 links and a 6" Cedar S20°W 35 links, all of which are now obliterated.

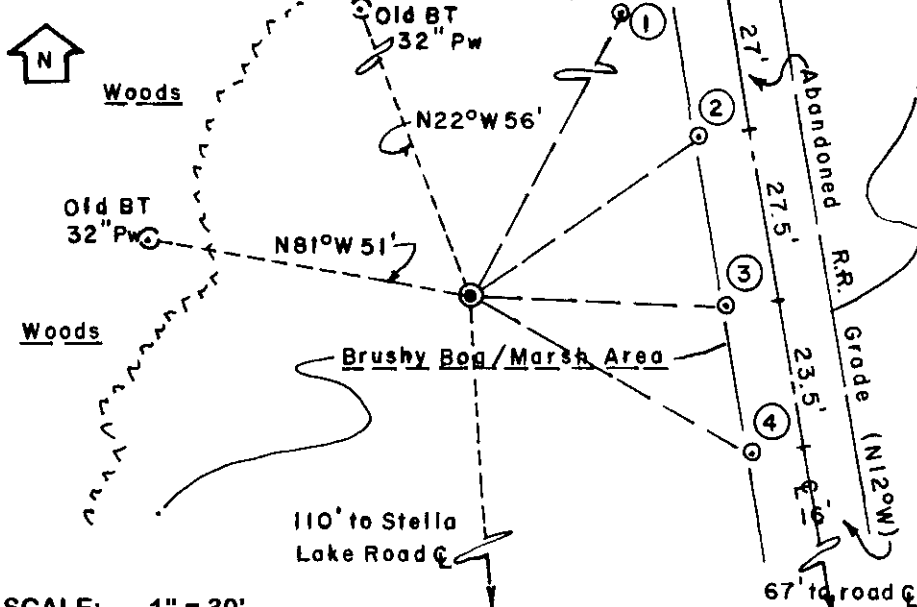
In 1935, Maine/Oneida County, found a scribed wood post by Vaughn at the corner location and nearly gone stump remains of the 6" GLO Cedar OBT N70°E 20 links. Maine replaced the old wood post with a 2" dia. iron pipe with stamped pipe cap and marked new BTs, a 14" Pw N27°W 86.5 links, now found as a 32" Pw with face blaze above root crown shut but indented scar overgrowth plain, and an 18" Pw N85°W 79.5 links, also found as a 32" Pw with face blaze above root crown shut but plain and a standard aluminum locator tag nailed to south face above a 6' high by 1.5' wide open lightning scar; locator tag also initialed by Meyer/CPI in 1970.

I believe that the old scribed wood post by Vaughn, and found by Maine in 1935, is the same post found this date and given to the Oneida County Land Information Office.

I set a standard white poly 'T' corner marker post along the NW side of iron pipe corner monument found.

This recovery completed November 3, 1998; there were no direct witnesses.

Plan view map of monument location with bearing and distance ties to a minimum of four(4) described witness or reference monuments of concrete, natural stone, iron, live bearing trees or equivalent material. If applicable, also show a minimum of two(2) bearing and distance ties to any other monument found and not accepted; including the bearing and distance from the accepted monument.



### WITNESS MONUMENT TIES:

- ① 5/8" dia. by 24" long rebar set with a standard yellow poly Reference Mark cap at top 1" or so above top of West edge of old abandoned RR grade bed embankment, N27°E 58.05'.
- ② Same monument set N54°E 43.45'.
- ③ Same monument set S88°E 39.90'.
- ④ Same monument set S61°E 50.70'.

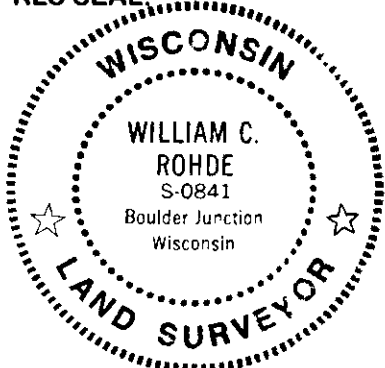
Note: The centerline of old abandoned 16' wide railroad grade bears N12°W with an overgrown grassy surface evidencing use as a woods trail.

I also set a fluorescent orange wire stake flag at each witness monument set to aid future recovery. Corner monument was also found painted with blue tree marking paint.

SCALE: 1" = 30'

Unless otherwise indicated, all bearing tree ties are to a .25" dia. by 2.5" long PK nail with a 1.25" dia. steel washer driven into unblazed right face and a .25" dia. by 2.5" long PK nail is also driven into unblazed face of bearing tree at DBH; the basis for measured bearings is by magnetic compass to nearest degree and all tie distances are measured horizontal by steel tape corrected to nearest 1/100th feet at standard temperature of 68 degrees Fahrenheit.

RLS SEAL:



### LAND SURVEYOR CERTIFICATE:

I, William C. Rohde, hereby certify that I am duly licensed as a Professional Land Surveyor in the State of Wisconsin; that this USPLS monument location was determined by me and/or under my direct supervision and control; and that this U.S. Public Land Survey Monument Location Record is true and correct to the best of my knowledge and belief.

Signed: William C. Rohde  
William C. Rohde RLS 841

