

CERTIFIED LAND CORNER RESTORATION

A 7 Index No. **A-7**

State of Wisconsin

County of Oneida } ss.

I Phillip T. Hansen

do hereby certify that on the 2nd day

of May, 19 75, I found

evidence of the Quarter

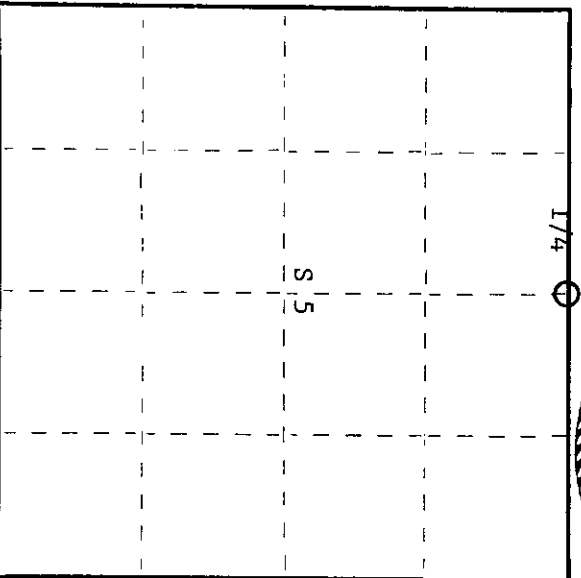
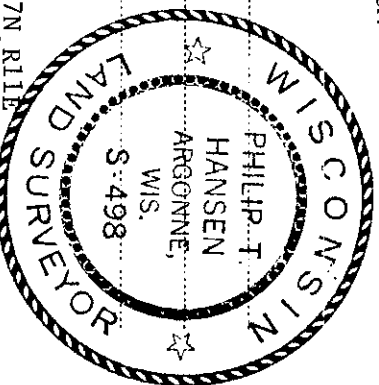
corner of Between Sections 5 and 32

Township 38 and 37, North, Range

11 East, Fourth Principal Meridian,

as described hereon; and that from this evidence I established a new monument and accessories as described hereon to perpetuate the original location of this corner.

Resident witnesses:



○ = Corner monument restored.

CERTIFIED LAND CORNER RESTORATION

History of original corner establishment:

Original corner established by Hiram C. Fellows, Govt. Deputy Surveyor, in 1859 from which sugar 6" bears N75°W, 10 links and birch 18" bears S10°W, 12 links.

Corner recovered by V.M. Maine, County Surveyor. Set a 4" cedar post, squared and scribed S5, 1/4 Maine, S32, 1/4 projecting 2' above ground.

Description of corner evidence found:

Recovered 4" cedar post, squared and scribed S5, 1/4 Maine; S32, 1/4 in poor condition. Also recovered a 2-1/2" iron pipe with brass cap scribed - T38 R11

A rock carron was piled around base of both stakes.

Another old post lying on rock carron.

Recovered ORT: White birch 14" S65°E 31.4 links scribed 1/4 S. T37 R11

Description of monument and accessories I established to perpetuate the original location of this corner.

As iron pipe was in good condition, it was left in place. Pipe was painted blue.

NBT's: Cedar 7" S39°W 39 links scribed 1/4 BT
Cedar 9" S14°W 60.8 links scribed 1/4 BT.

Dated at Rhineland, Wis., this 25th day of June, 19 75.

Signature Phillip T. Hansen Title Registered Land Surveyor Registration No. S-498
(County Surveyor, Registered Land Surveyor, or other duly authorized official)

Office of Registrar of Deeds, County of Oneida I hereby certify that the within instrument was filed in this office for record on the 1st day of October, 19 75 at 3:00 o'clock P.M.

Donna Verage Fuchs
(Registrar of Deeds)

By: _____ Deputy

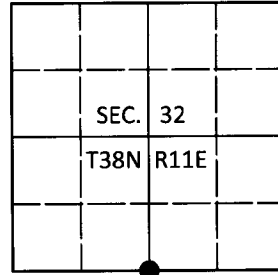
381132020

U.S. PUBLIC LAND SURVEY MONUMENT RECORD

Note: This form is intended and designed to fulfill all requirements of Wisconsin Administrative Code, Chapter A-E 7.08 U.S. Public Land Survey Monument Record (3)(a-i).

(a) CORNER LOCATION
 1/4 Cor. of Secs. 5 & 32
 Township 37 & 38 North
 Range 11 East of the 4th P.M.
 Town of Three Lakes/Piehl
 County of Oneida

WISCRS - Oneida County
 N: 197,220.62 USft
 E: 332,616.00 USft
 Datum: NAD 83(1991)
 GNSS Method: Aero-Metric Offset
 GNSS Control: Unknown



(b) HISTORY OF ORIGINAL CORNER ESTABLISHMENT

Original Surveyor: _____ Original Accessories: _____
 Date of Survey _____ Commenced: _____
 Completed: _____

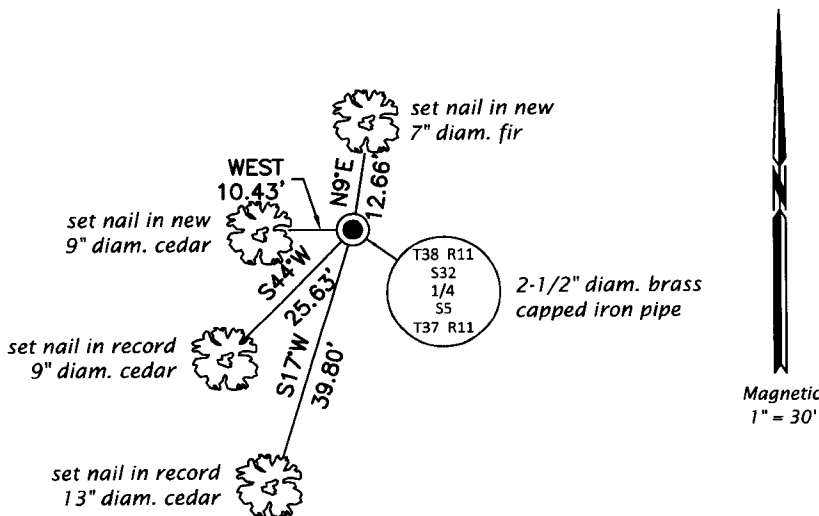
(b)(f)(g)(h) Description of monument found at this corner and if it was accepted, state all evidence (material, testimonial, occupational, plats, records, other monuments) used as a basis for accepting. If not accepted or if nothing was found, state evidence used as basis for establishing location. If re-established through lost corner proportionate methods, indicate all monuments, distances and directions used to establish. Indicate type of monument and sign post found or set.

This is a perpetuation of a previous USPLS Monument Record by Philip T. Hansen, RLS dated June 25, 1975 and filed in the office of the Oneida County Register of Deeds. A complete history of the corner can be found on the previous monument record. I accept the previous location as a true and faithful perpetuation or reestablishment of the original corner location and further perpetuate it as follows.

June 22, 2017: Jeff Austin visited the corner and recovered the record monument, a 2-1/2" diam. iron pipe with a 2-1/2" diam. brass cap projecting 30" above a collar of stone. Accessories were found or established as shown below. A white vinyl sign post was found Northwest, 2.5 ft.

The coordinate value shown has been verified by at least one of the following methods: 1) comparison to a previously GPS determined published value; 2) the value is the average of two or more GPS observations at a markedly different time; 3) one or more distances were measured back to the GPS observed corner from temporary GPS observed offset locations.

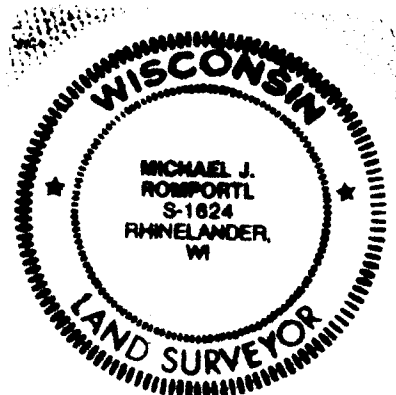
(c)(d)(e) Plan view of corner with ties to at least 4 witness monuments. If in disagreement with previously established corner, show the distances between the two corners and also indicate the ties to the disputed.



REGISTER OF DEEDS OFFICE
 ONEIDA COUNTY
 FILED

JUL 11 2017

AT _____ O'CLOCK _____ M
 KYLE J. FRANSON
 REGISTER OF DEEDS



(i) I, Michael J. Romportl, Professional Land Surveyor No. S-1624, hereby certify that the corner location on this record was determined by me or under my direction and control and that this U.S. Public Land Survey Monument Record is correct and complete to the best of my knowledge and belief.

Michael J. Romportl
 Signature

7/11/2017
 Date