

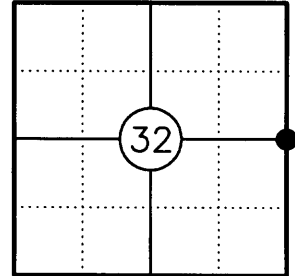
U.S. PUBLIC LAND SURVEY MONUMENT RECORD

NOTE: THIS FORM IS INTENDED AND DESIGNED TO FULFILL ALL REQUIREMENTS OF WISCONSIN ADMINISTRATIVE CODE CHAPTER A-E 7.08 U.S. PUBLIC LAND SURVEY MONUMENT RECORD (3) (a)(b)(c)(d)(e)(f)(g)(h)(i). AN ADDITIONAL SHEET MAY BE ADDED IF NECESSARY TO CONFIRM WITH SAID REQUIREMENTS.

(a) CORNER LOCATION:

EAST 1/4 CORNER OF SECTION 32
 TOWNSHIP 38 NORTH
 RANGE 11 EAST
 TOWN OF THREE LAKES
 ONEIDA COUNTY

ONEIDA COUNTY COORDINATES (FEET)
 NORTHING: 199634.973
 EASTING: 335322.029



(b) HISTORY OF ORIGINAL CORNER:

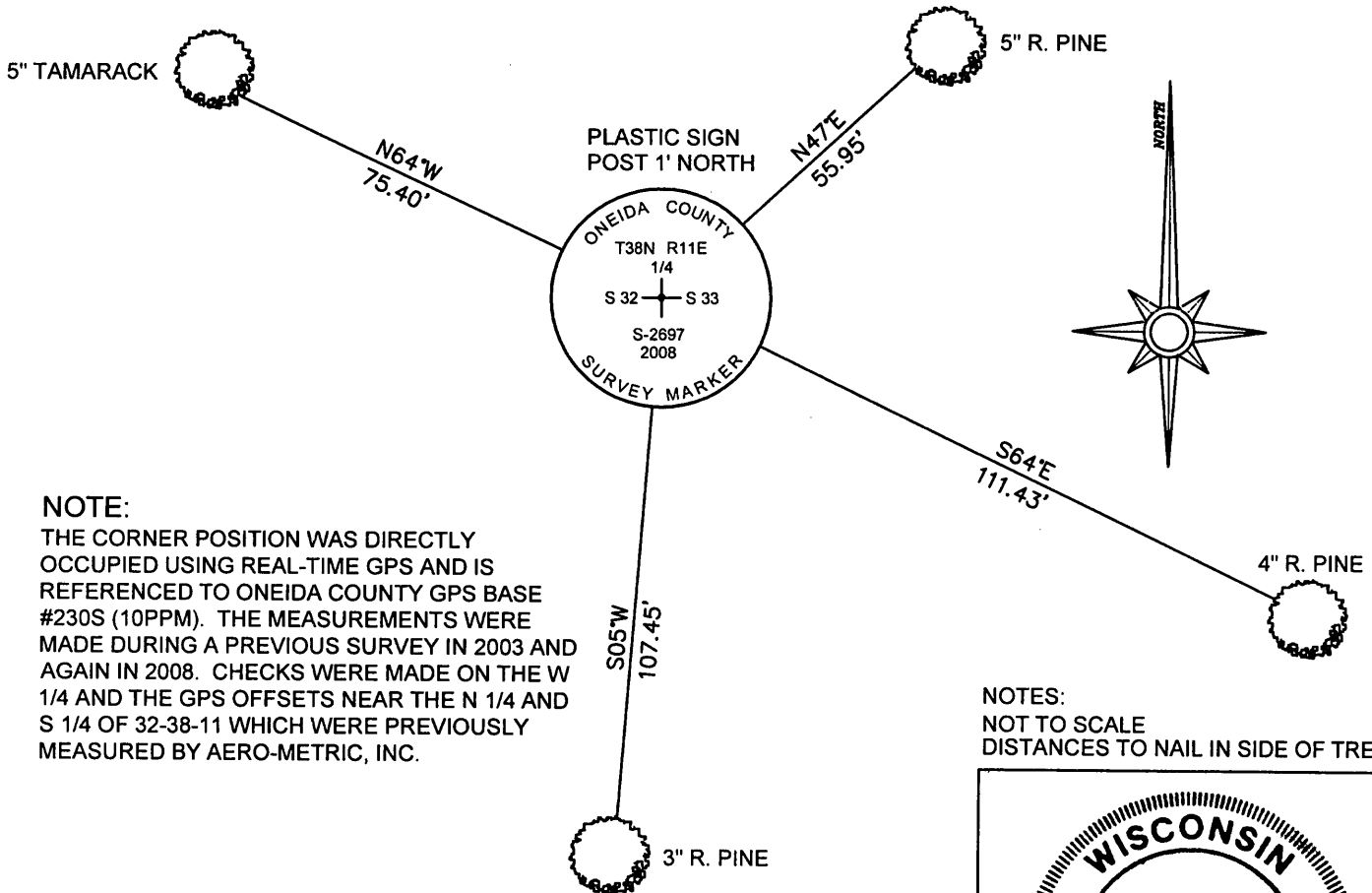
ORIGINAL SURVEYOR: WILLIAM E. DAUGHERTY
 DATE OF SURVEY: AUG. 1863 - SEPT. 1859

ORIGINAL BEARING TREES: 8" SPRUCE - N85°W, 15 LKS.
 8" SPRUCE - S65°E, 5 LKS.

(f)(g)(h) DESCRIPTION OF MONUMENT FOUND AT THIS CORNER AND IF IT WAS ACCEPTED STATE ALL EVIDENCE (MATERIAL, TESTIMONIAL, OCCUPATIONAL, PLATS, RECORDS, OTHER MONUMENTS) USED AS A BASIS FOR ESTABLISHING LOCATION. IF REESTABLISHING THROUGH LOST CORNER PROPORTIONATE METHODS, INDICATE ALL MONUMENTS, DISTANCES, AND DIRECTIONS USED TO ESTABLISH. INDICATE TYPE OF MONUMENT AND SIGN POST FOUND OR SET.

- 1950'S: F.R. WINCENTSEN SET A 5" SQUARE WOOD POST AT 39.00 CHAINS BETWEEN THE OPPOSING SECTION CORNERS TO THE NORTH AND SOUTH. THE CORNER IS IN AN OPEN MARSH WITH NO BT'S NEAR.
- 05/04/89: LEONARD L. LAMPERT, RLS NO. S-129, FOUND A 5" SQUARE WOOD POST DURING HIS SURVEY IN SECTION 33. HE SET A 3/4" DIA. IRON ROD ON THE SOUTH EDGE OF THE WOOD POST.
- 11/11/03: STEVEN J. FAVORITE, RLS NO. S-1616 FOUND LAMPERT'S IRON ROD DURING HIS SURVEY IN SECTION 32.
- 11/20/08: I FOUND LAMPERT'S 3/4" DIA. IRON ROD IN GOOD CONDITION AND THE WOOD POST, NOW DOWN AND ROTTED. I REPLACED THE IRON ROD WITH A 2-1/2" DIA. ONEIDA COUNTY ALUMINUM MONUMENT AND MADE ACCESSORIES AS SHOWN BELOW.

(c)(d)(e) PLAN VIEW OF CORNER WITH TIES TO AT LEAST FOUR WITNESSES. IF IN DISAGREEMENT WITH PREVIOUSLY ESTABLISHED CORNER, SHOW THE DISTANCES BETWEEN THE TWO CORNERS AND ALSO INDICATE THE TIE TO THE DISPUTED CORNER.



NOTE:
 THE CORNER POSITION WAS DIRECTLY OCCUPIED USING REAL-TIME GPS AND IS REFERENCED TO ONEIDA COUNTY GPS BASE #230S (10PPM). THE MEASUREMENTS WERE MADE DURING A PREVIOUS SURVEY IN 2003 AND AGAIN IN 2008. CHECKS WERE MADE ON THE W 1/4 AND THE GPS OFFSETS NEAR THE N 1/4 AND S 1/4 OF 32-38-11 WHICH WERE PREVIOUSLY MEASURED BY AERO-METRIC, INC.

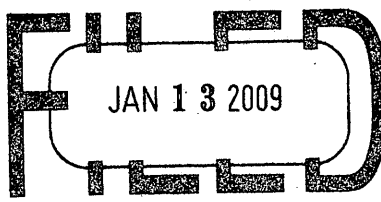
NOTES:
 NOT TO SCALE
 DISTANCES TO NAIL IN SIDE OF TREE



INDEX NO. X-9

I, JEFFREY D. ANDERSON, REGISTERED LAND SURVEYOR NO. 2697, HEREBY CERTIFY THAT THE CORNER LOCATION ON THIS RECORD WAS REFERENCED BY ME OR UNDER MY DIRECTION AND CONTROL; THAT THE POSITIONAL ACCURACY OF COORDINATES DOES NOT EXCEED 50PPM AND THAT THIS U.S. PUBLIC LAND SURVEY MONUMENT RECORD IS COMPLETE TO THE BEST OF MY KNOWLEDGE AND BELIEF.

Jeffrey D. Anderson
 SIGNATURE 12/5/08
 DATE 3811322000



At _____ O'Clock _____ M
THOMAS H. LEIGHTON
REGISTER OF DEEDS

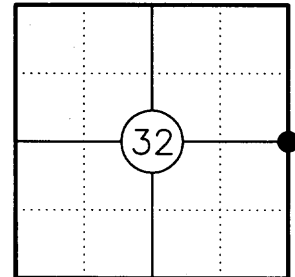
U.S. PUBLIC LAND SURVEY MONUMENT RECORD

NOTE: THIS FORM IS INTENDED AND DESIGNED TO FULFILL ALL REQUIREMENTS OF WISCONSIN ADMINISTRATIVE CODE CHAPTER A-E 7.08 U.S. PUBLIC LAND SURVEY MONUMENT RECORD (3) (a)(b)(c)(d)(e)(f)(g)(h)(i). AN ADDITIONAL SHEET MAY BE ADDED IF NECESSARY TO CONFIRM WITH SAID REQUIREMENTS.

(a) CORNER LOCATION:

EAST 1/4 CORNER OF SECTION 32
TOWNSHIP 38 NORTH
RANGE 11 EAST
TOWN OF THREE LAKES
ONEIDA COUNTY

ONEIDA COUNTY COORDINATES (FEET)
NORTHING: 199634.973
EASTING: 335322.029



(b) HISTORY OF ORIGINAL CORNER:

ORIGINAL SURVEYOR: WILLIAM E. DAUGHERTY
DATE OF SURVEY: AUG. 1863 - SEPT. 1859

ORIGINAL BEARING TREES: 8" SPRUCE - N85°W, 15 LKS.
8" SPRUCE - S65°E, 5 LKS.

(f)(g)(h) DESCRIPTION OF MONUMENT FOUND AT THIS CORNER AND IF IT WAS ACCEPTED STATE ALL EVIDENCE (MATERIAL, TESTIMONIAL, OCCUPATIONAL, PLATS, RECORDS, OTHER MONUMENTS) USED AS A BASIS FOR ESTABLISHING LOCATION. IF REESTABLISHING THROUGH LOST CORNER PROPORTIONATE METHODS, INDICATE ALL MONUMENTS, DISTANCES, AND DIRECTIONS USED TO ESTABLISH. INDICATE TYPE OF MONUMENT AND SIGN POST FOUND OR SET.

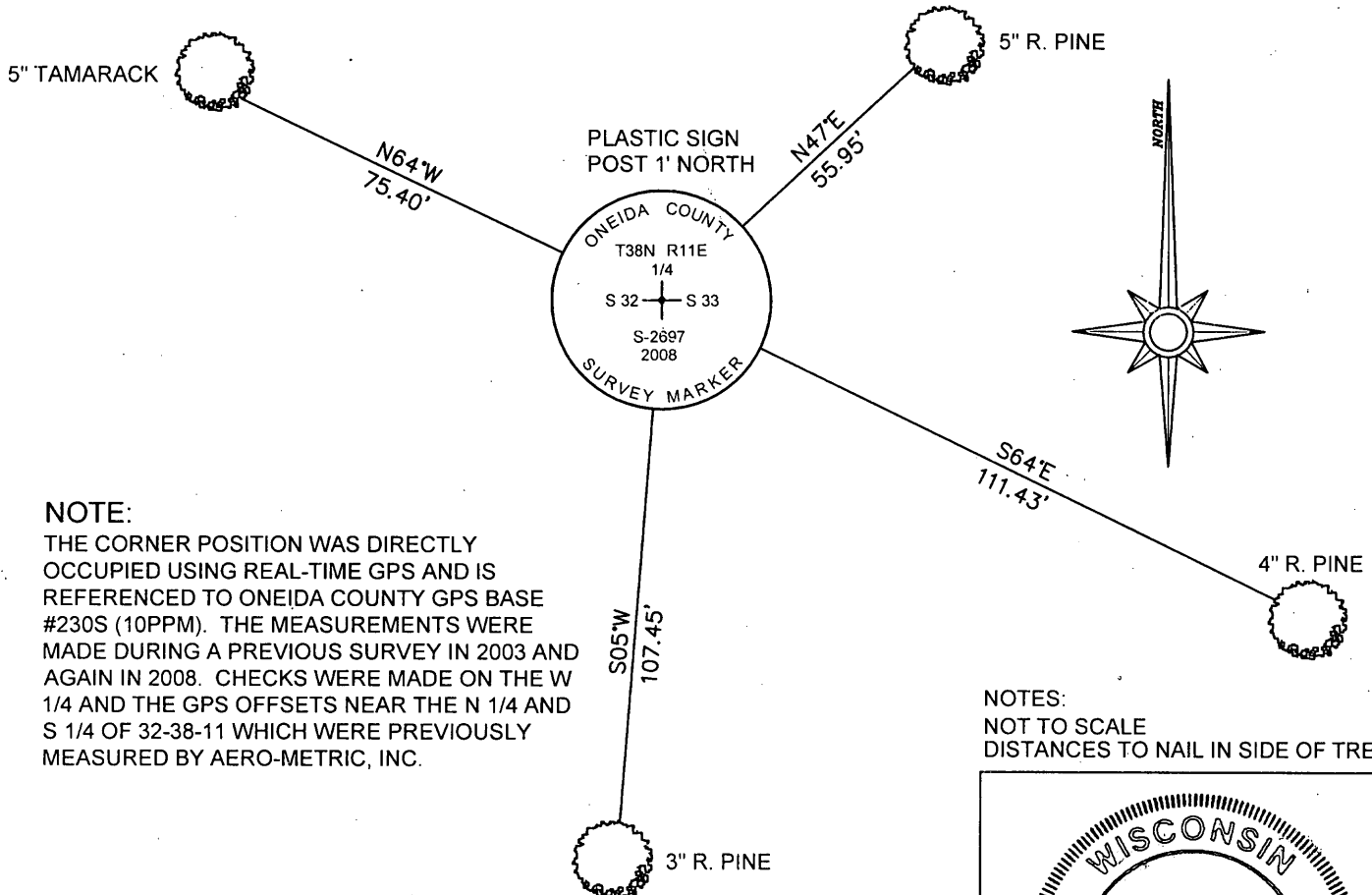
1950'S: F.R. WINCENTSEN SET A 5" SQUARE WOOD POST AT 39.00 CHAINS BETWEEN THE OPPOSING SECTION CORNERS TO THE NORTH AND SOUTH. THE CORNER IS IN AN OPEN MARSH WITH NO BT'S NEAR.

05/04/89: LEONARD L. LAMPERT, RLS NO. S-129, FOUND A 5" SQUARE WOOD POST DURING HIS SURVEY IN SECTION 33. HE SET A 3/4" DIA. IRON ROD ON THE SOUTH EDGE OF THE WOOD POST.

11/11/03: STEVEN J. FAVORITE, RLS NO. S-1616 FOUND LAMPERT'S IRON ROD DURING HIS SURVEY IN SECTION 32.

11/20/08: I FOUND LAMPERT'S 3/4" DIA. IRON ROD IN GOOD CONDITION AND THE WOOD POST, NOW DOWN AND ROTTED. I REPLACED THE IRON ROD WITH A 2-1/2" DIA. ONEIDA COUNTY ALUMINUM MONUMENT AND MADE ACCESSORIES AS SHOWN BELOW.

(c)(d)(e) PLAN VIEW OF CORNER WITH TIES TO AT LEAST FOUR WITNESSES. IF IN DISAGREEMENT WITH PREVIOUSLY ESTABLISHED CORNER, SHOW THE DISTANCES BETWEEN THE TWO CORNERS AND ALSO INDICATE THE TIE TO THE DISPUTED CORNER.



NOTE:
THE CORNER POSITION WAS DIRECTLY OCCUPIED USING REAL-TIME GPS AND IS REFERENCED TO ONEIDA COUNTY GPS BASE #230S (10PPM). THE MEASUREMENTS WERE MADE DURING A PREVIOUS SURVEY IN 2003 AND AGAIN IN 2008. CHECKS WERE MADE ON THE W 1/4 AND THE GPS OFFSETS NEAR THE N 1/4 AND S 1/4 OF 32-38-11 WHICH WERE PREVIOUSLY MEASURED BY AERO-METRIC, INC.

NOTES:
NOT TO SCALE
DISTANCES TO NAIL IN SIDE OF TREE

I, JEFFREY D. ANDERSON, REGISTERED LAND SURVEYOR NO. 2697, HEREBY CERTIFY THAT THE CORNER LOCATION ON THIS RECORD WAS REFERENCED BY ME OR UNDER MY DIRECTION AND CONTROL; THAT THE POSITIONAL ACCURACY OF COORDINATES DOES NOT EXCEED 50PPM AND THAT THIS U.S. PUBLIC LAND SURVEY MONUMENT RECORD IS COMPLETE TO THE BEST OF MY KNOWLEDGE AND BELIEF.

Jeffrey D. Anderson 12/5/08
SIGNATURE DATE



INDEX NO. X-9

3811322000