

CERTIFIED LAND CORNER RESTORATION

Index No. A-11

State of Wisconsin }  
County of Oneida } ss.

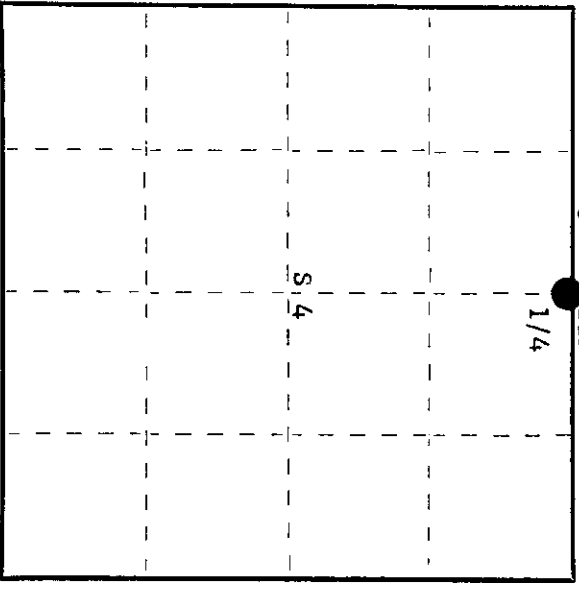
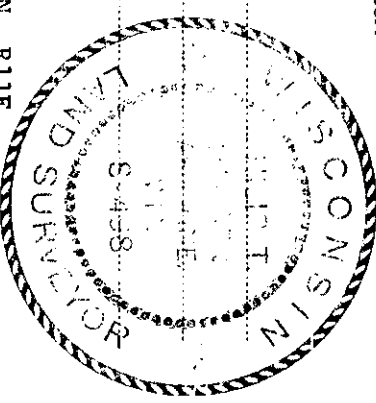
History of original corner establishment:  
Corner established by U.S.G.L.O.

I, Phillip T. Hansen, do hereby certify that on the 12th day of December, 1978, I found evidence of the Quarter corner of Section 33 & 4 Township 38-37, North, Range 11 East, Fourth Principal Meridian, as described hereon; and that from this evidence I established a new monument and accessories as described hereon to perpetuate the original location of this corner.

Resident witnesses:

Glen Barker

Jim Clafflin



○ = Corner monument restored.

Description of corner evidence found:

Recovered U.S.G.L.O. 2" iron pipe with 2 1/2" brass cap, projecting 8" above ground. Cap stamped: There is also a 1 1/2" well point standing beside it. No evidence of any old BT's recovered. Area has been logged off.

U.S. Gen. Land Office  
1/4 S+33  
S+4

Description of monument and accessories I established to perpetuate the original location of this corner.  
Left monument in place as recovered. Painted the monument and well pipe blue.

- Marked NBT's - Maple 8" S35°W 36.05 links
  - Maple 8" S61°E 79.2 links
  - Maple 8" N84°W 55.1 links
  - W. Birch 10" N13°W 51.1 links
- all scribed 1/4 BT.

Dated at Rhineland, Wis., this 18th day of December, 1978

Signature Phillip T. Hansen Title Registered Land Surveyor Registration No. S-498  
(County Surveyor, Registered Land Surveyor, or other duly authorized official)

Office of Register of Deeds, County of Oneida  
instrument was filed in this office for record on the 25th day of December, 1979  
at 1:15 o'clock P. M.

Louis George Kuehn  
(Register of Deeds)

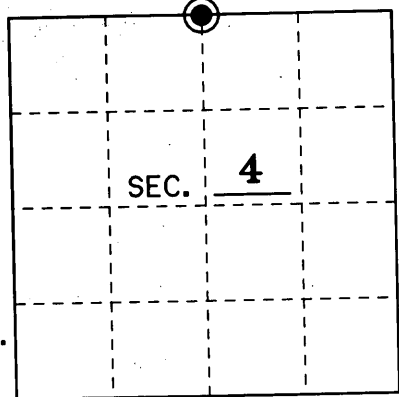
By Phillip T. Hansen Deputy

3811330020

# U.S. PUBLIC LAND SURVEY MONUMENT RECORD

Note: This form is intended and designed to fulfill all requirements of Wisconsin Administrative Code, Chapter A-E 7.08 U.S. Public Land Monument Record (3)(a)(b)(c)(d)(e)(f)(g)(h)(i). An additional sheet may be added if necessary to conform with said requirements.

(a) CORNER LOCATION: North County or State Plane Coordinates  
1/4 Corner of Section 4 Northing \_\_\_\_\_  
 Township 37 North Easting \_\_\_\_\_  
 Range 11 East Datum Base \_\_\_\_\_  
 Township/City Piehl County of Oneida



(b) HISTORY OF ORIGINAL CORNER ESTABLISHMENT Original B.T.'s  
 Original Surveyor: Hiram C. Fellows 6" Tamarack S 15° W 11 Lks.  
 Date of Survey: July, 1859 6" Tamarack N 5° W 25 Lks.

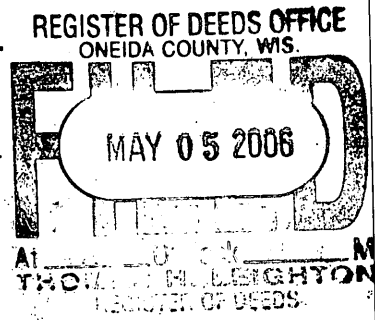
(b)(f)(g)(h) Description of monument found at this corner and if it was accepted, state all evidence (material, testimonial, occupational, plats, records, other monuments) used as a basis for accepting. If not accepted or if nothing was found, state evidence used as basis for establishing location. If reestablished through lost corner proportionate methods, indicate all monuments, distances and directions used to establish. Indicate type of monument and sign post found or set.

Sept. 10, 1910: J.A. Melendy of Minneapolis Cedar Lumber Co. found old post still standing and the original 6" Tam. S 15° W 11 Lks.

Sept. 11, 1935: Maine found original 6" Tam. S 15° W 11 lks. and stump of the other original 6" Tam. N 5° W 25 lks. and set a new squared Cedar Post and made four new B.T.'s: 4" Spruce N 39° E 27 lks., 3" Spruce S 85° W 36.25 lks., 4" Spruce S 4° W 14 lks. and a 2" Tam. N 39° W 15 lks.

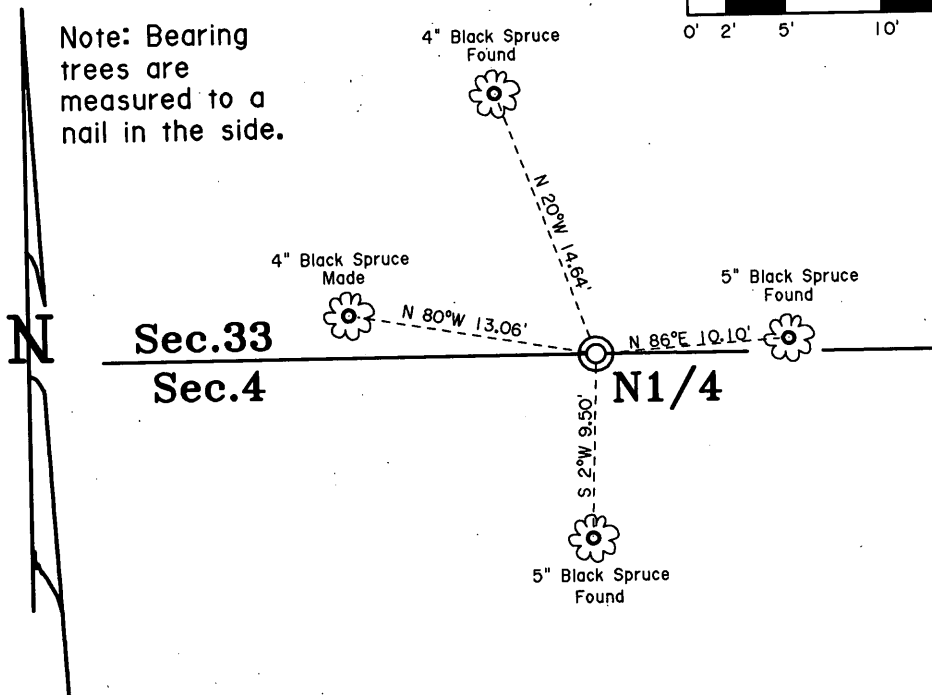
April 25, 1989: Leonard L. Lampert finds 2" capped iron pipe and makes new B.T.'s: 4" Spruce N 20° W 14.6 feet, 4" Spruce N 36° E 17.4 feet, 4" Spruce N 86° E 10.0 feet and a 4" Spruce S 2° W 9.4 feet.

May 19, 2005: I, Michael e. Weber find an Aluminum capped monument and set a Plastic sign post 0.5 feet Northwest of corner. I found three of Lamperts B.T.'s and made one new one as shown below.

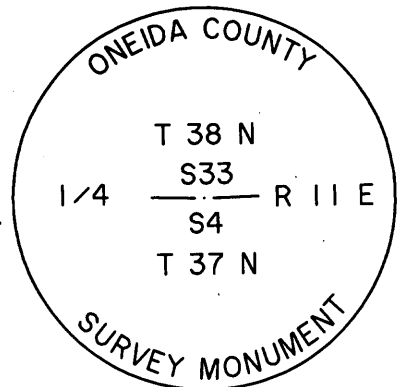


(c)(d)(e) Plan view of the corner with ties to at least 4 witness monuments. If in disagreement with previously established corner, show the distances between the two corners and also indicate the ties to the disputed.

SCALE: 1" = 10'

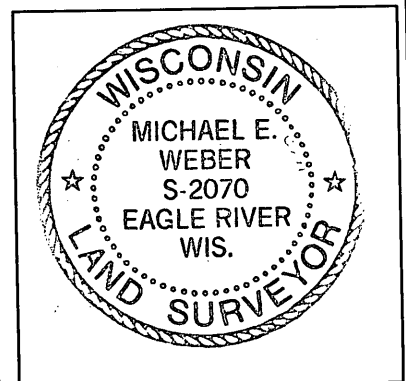


Note: Bearing trees are measured to a nail in the side.



(i) I, Michael E. Weber R.L.S. No. 2070 hereby certify that the corner location on this record was determined by me or under my direction and control and that this U.S. Public Land Survey Monument Record is correct and complete to the best of my knowledge and belief.

Signature Michael E Weber Date 5-19-2005



3811330020

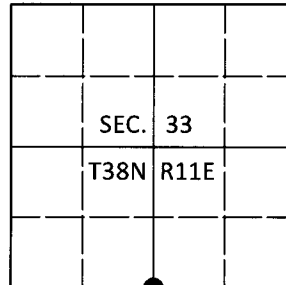
Index No. A-11

# U.S. PUBLIC LAND SURVEY MONUMENT RECORD

Note: This form is intended and designed to fulfill all requirements of Wisconsin Administrative Code, Chapter A-E 7.08 U.S. Public Land Survey Monument Record (3)(a-i).

(a) CORNER LOCATION  
 1/4 Cor. of Secs. 4 & 33  
 Township 37 & 38 North  
 Range 11 East of the 4th P.M.  
 Town of Piehl & Three Lakes  
 County of Oneida

WISCORS - Oneida County  
 N: 196,599.92 USft  
 E: 338,133.74 USft  
 Datum: NAD83(2011)  
 GNSS Method: RTN - Direct  
 GNSS Control: WISCORS VRS



(b) HISTORY OF ORIGINAL CORNER ESTABLISHMENT

Original Surveyor:

Original Accessories:

Date of Survey

Commenced:  
Completed:

see previous monument record

(b)(f)(g)(h) Description of monument found at this corner and if it was accepted, state all evidence (material, testimonial, occupational, plats, records, other monuments) used as a basis for accepting. If not accepted or if nothing was found, state evidence used as basis for establishing location. If re-established through lost corner proportionate methods, indicate all monuments, distances and directions used to establish. Indicate type of monument and sign post found or set.

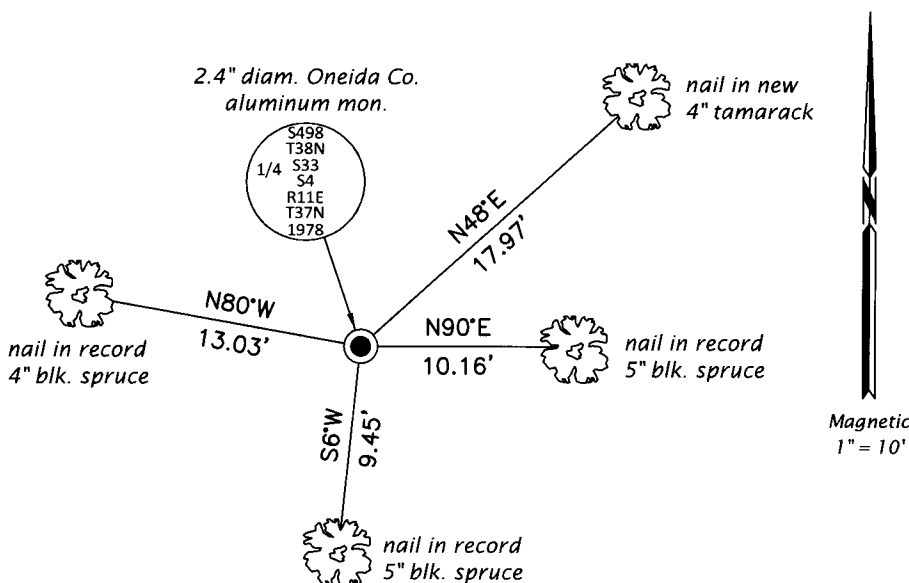
*This is a perpetuation of the following monument record(s) that comprise a complete history of the corner:*

*May 19, 2005: USPLS Monument Record No. 3811330000 by Michael E. Weber, RLS*

*May 29, 2019: I found and accepted the record monument, a 2.4" diam. aluminum pipe with a 3.3" diam. Oneida Co. aluminum cap projecting 6" above the bog surface. A 1.3" diam. iron pipe is adjacent to the monument. The record bearing tree at N20°W is now a stump. I found or established accessories as shown below. I found a white vinyl sign post bearing Northwest, 0.5 ft.*

*The coordinate value shown has been verified by at least one of the following methods: 1) comparison to a previously GPS determined published value; 2) the value is the average of two or more GPS observations at a markedly different time; 3) one or more distances were measured back to the GPS observed corner from temporary GPS observed offset locations.*

(c)(d)(e) Plan view of corner with ties to at least 4 witness monuments. If in disagreement with previously established corner, show the distances between the two corners and also indicate the ties to the disputed.

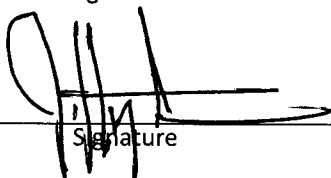


REGISTER OF DEEDS OFFICE  
 ONEIDA COUNTY  
 FILED

JUN 18 2019

KYLE J. FRANSON  
 REGISTER OF DEEDS

(i) I, Jeffrey W. Austin, Professional Land Surveyor No. S-1885, hereby certify that the corner location on this record was determined by me or under my direction and control and that this U.S. Public Land Survey Monument Record is correct and complete to the best of my knowledge and belief.

  
 Signature

1 JUNE 2019  
 Date