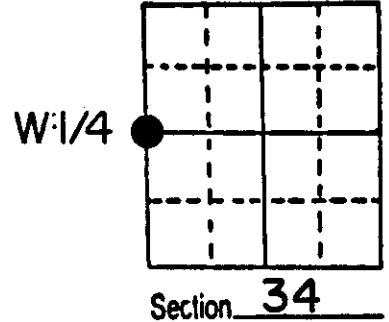


U.S. PUBLIC LAND SURVEY MONUMENT RECORD

Note: This form is intended and designed to fulfill all requirements of Wisconsin Administrative Code, Chapter A-E 5.02, U.S. Public Land Survey Monument Record (3) (a) (b) (c) (d) (e) (f) (g) (h) (i). An additional sheet may be added if necessary to conform with said requirements.

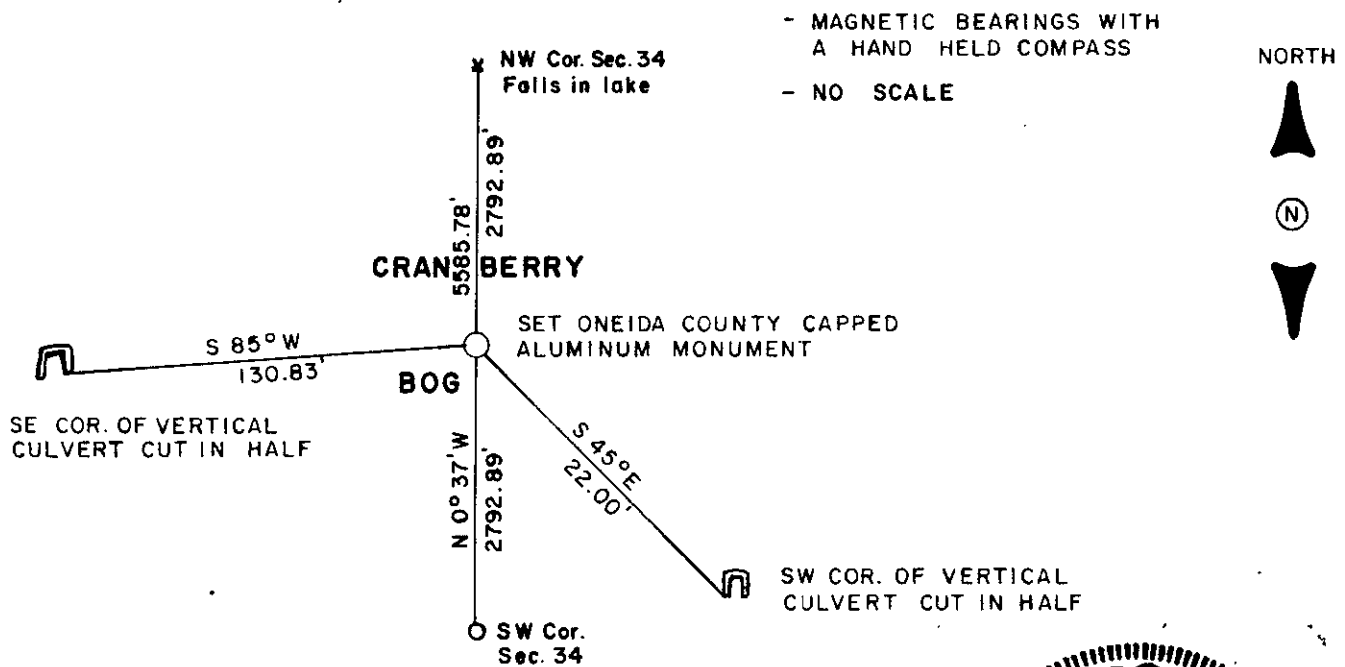
(a) Corner location: Township 38 North
 Range 11 East/West
 Town/City/Village of THREE LAKES
 County of ONEIDA



(b) (f) (g) (h) Description of monument found at this corner and if it was accepted, state all evidence (material, testimonial, occupational, plats, records, other monuments) used as a basis for accepting. If not accepted or if nothing was found, state evidence used as basis for establishing location. If reestablished through lost corner proportionate methods, indicate all monuments, distances and directions used to establish.

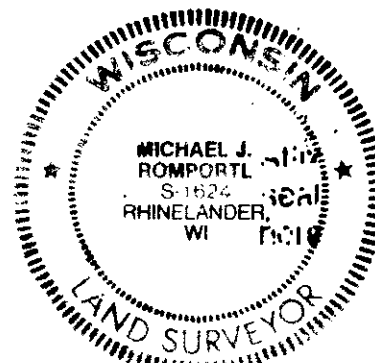
- 1859 William E. Daugherty established original corner @ 40.00 North of SW corner. B.T.s; Spruce 6 N17W 10, Spruce 6 S 81 E 16.
- 1950 F.R. Wincentsen establishes $\frac{1}{4}$ corner by proportionate measure while working in Sec. 34.
- At this location I found no evidence of the original or F.R.W. corner. The area has been cleared and is presently a cranberry bog. I established this corner by proportionate methods checking closely with F.R.W.s position. This corner sits in the north edge of a road between the cranberry bogs. I set it about 6" below surface and witnessed it as shown below.

(c) (d) (e) Plan view of corner with ties to at least 4 witness monuments. If in disagreement with previously established corner, show the distances between the two corners and also indicate the ties to the disputed corner.



(i) I, MICHAEL J. ROMPORTL R.L.S. 1624
 (type or print name) certify that the corner location on this record was determined by me or under my direction and control and that this U.S. Public Land Survey Monument Record is correct and complete to the best of my knowledge and belief.

Michael J. Romportl Signature Date MAY 31, 1985



Index No. X-13

3811332000