

CERTIFIED LAND CORNER RESTORATION

Index No. A-17

State of Wisconsin

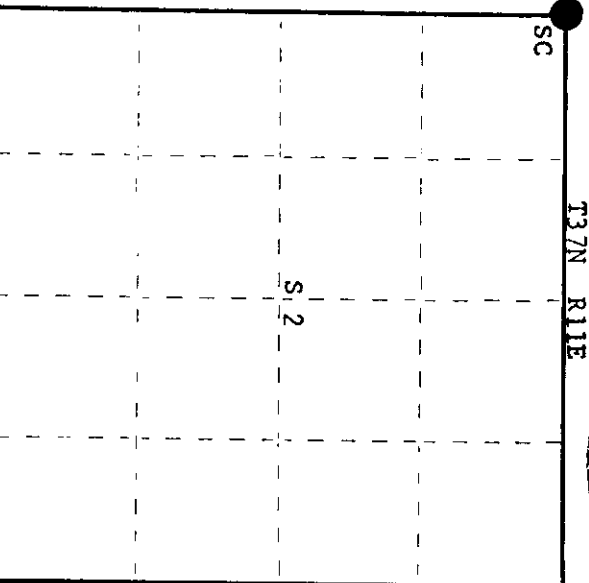
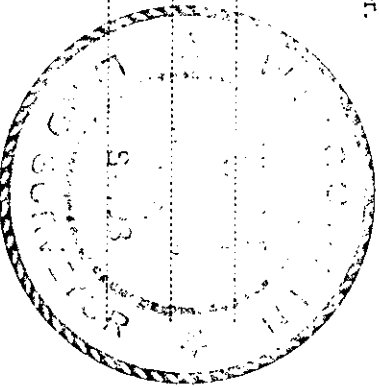
County of Oneida } ss.

I, Phillip T. Hansen, do hereby certify that on the 7th day of December, 1978, I found evidence of the Section corner of 34 & 35, 3 & 2 Township 38 & 37, North, Range 11 East, Fourth Principal Meridian, as described hereon; and that from this evidence I established a new monument and accessories as described hereon to perpetuate the original location of this corner.

Resident witnesses:

Glen Barker

Jim Claflin



○ = Corner monument restored.

CERTIFIED LAND CORNER RESTORATION

Index No. A-17

History of original corner establishment: Original corner established by Hiram C. Fellows, Deputy Surveyor, in 1859, from which tamarack 10" bears N 37° W 17 links; tamarack 6" bears N 41° E 39 links; tamarack 7" bears S 37° E, 24 links and tamarack 6" bears S 51° W 16 links.

Corner recovered by J.J. Melendy, Surveyor, in 1910. Set a new cedar post and set stones around it. Marked NBT's - Birch 13" N55°E 52½ links; spruce 9" S30°E 31 links; balsam 11" S41°W 25-2/3 links and birch 10" N31½°W 30-1/3 links.

Corner remonumented by US GLO in 1941. H.C. Lawrence, Registered Land Surveyor, recovered this corner in 1946. Found Y. Birch stub 12" N52°E 53 links; hemlock 18" N45°W 95 links; yellow birch 8" S71°W 54 links.

Description of corner evidence found:  
Recovered US GLO 4" diameter concrete monument with 2½" brass cap projecting 8" above ground, cap stamped:  
Also recovered Melendy's old cedar post buried in muck beside monument.

Recovered OBT's -

- Hemlock 18" (22") N45°W 95 links.
- Y. Birch 8" S71°W 54 links (53.4 lks) (now 3' stump)
- Balsam 5" N33°E 35.5 links, now a 3' stump.

Gen. Land O  
S T38N R11E F  
U S34 S35 F  
S3+S2 I  
T37N C  
1941 E

Description of monument and accessories I established to perpetuate the original location of this corner.  
Drove Melendy's point and other cedar beside monument for support.

Marked NBT's -

- W. Spruce 10" N87°E 81.3 links, scribed SC BT.
- Maple 18" S70°W 53.7 links, scribed SC BT.
- Maple 6" S20°E 51.45 links, scribed SC BT.

Dated at Rhineland, Wis., this 11th day of December, 1978

Signature: Phillip T. Hansen Title Registered Land Surveyor Registration No. S-498  
(County Surveyor, Registered Land Surveyor, or other duly authorized official)

Office of Register of Deeds, County of Oneida, I hereby certify that the within instrument was filed in this office for record on the 25th day of January, 1979 at 1:15 o'clock P.M.

Doris Weege Kuehn  
(Register of Deeds)

By: \_\_\_\_\_ Deputy

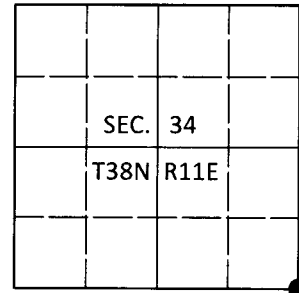
00005200

# U.S. PUBLIC LAND SURVEY MONUMENT RECORD

Note: This form is intended and designed to fulfill all requirements of Wisconsin Administrative Code, Chapter A-E 7.08 U.S. Public Land Survey Monument Record (3)(a-i).

(a) CORNER LOCATION  
 Cor. of Secs. 2, 3, 34 & 35  
 Township 37 & 38 North  
 Range 11 East of the 4th P.M.  
 Town of Piehl & Three Lakes  
 County of Oneida

WISCRS - Oneida County  
 N: 196,813.15 USft  
 E: 346,401.21 USft  
 Datum: NAD83(2011)  
 GNSS Method: RTN - Direct  
 GNSS Control: WISCORS VRS



(b) HISTORY OF ORIGINAL CORNER ESTABLISHMENT

Original Surveyor:

Original Accessories:

Date of Survey

Commenced:  
 Completed:

see previous monument record

(b)(f)(g)(h) Description of monument found at this corner and if it was accepted, state all evidence (material, testimonial, occupational, plats, records, other monuments) used as a basis for accepting. If not accepted or if nothing was found, state evidence used as basis for establishing location. If re-established through lost corner proportionate methods, indicate all monuments, distances and directions used to establish. Indicate type of monument and sign post found or set.

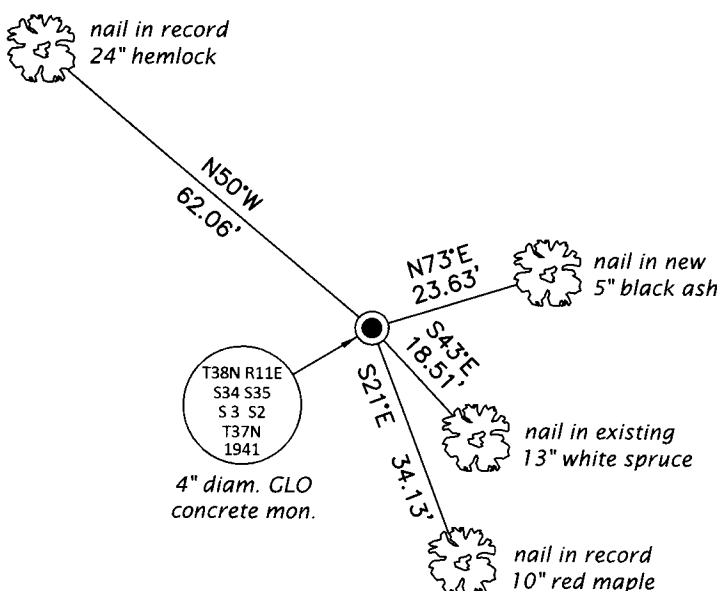
*This is a perpetuation of the following monument record(s) that comprise a complete history of the corner:*

*Dec. 11, 1978: Certified Land Corner Restoration No. 3811340000 by Philip T. Hansen, RLS*

*May 28, 2019: I found and accepted the record monument, a 4" diam. concrete monument with a 2.5" diam. GLO brass tablet projecting 12" above the ground surface. The record bearing trees at S70°W and N87°E are now gone. I found or established accessories as shown below. I set a white vinyl sign post adjacent to the monument.*

*The coordinate value shown has been verified by at least one of the following methods: 1) comparison to a previously GPS determined published value; 2) the value is the average of two or more GPS observations at a markedly different time; 3) one or more distances were measured back to the GPS observed corner from temporary GPS observed offset locations.*

(c)(d)(e) Plan view of corner with ties to at least 4 witness monuments. If in disagreement with previously established corner, show the distances between the two corners and also indicate the ties to the disputed.



Magnetic  
1" = 30'

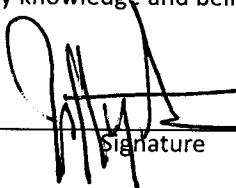


REGISTER OF DEEDS OFFICE  
 ONEIDA COUNTY  
 FILED

JUN 18 2019

KYLE J. FRANSON  
 REGISTER OF DEEDS

(i) I, Jeffrey W. Austin, Professional Land Surveyor No. S-1885, hereby certify that the corner location on this record was determined by me or under my direction and control and that this U.S. Public Land Survey Monument Record is correct and complete to the best of my knowledge and belief.

  
 Signature

1 JUNE 2019  
 Date

3811340000 (INDEX NO. Z-17)