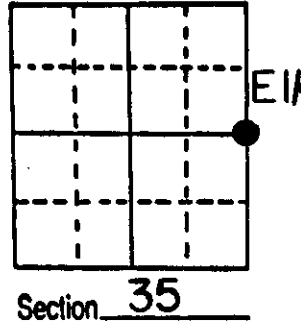


# U.S. PUBLIC LAND SURVEY MONUMENT RECORD

**Note:** This form is intended and designed to fulfill all requirements of Wisconsin Administrative Code, Chapter A-E 5.02, U.S. Public Land Survey Monument Record (3) (a) (b) (c) (d) (e) (f) (g) (h) (i). An additional sheet may be added if necessary to conform with said requirements.

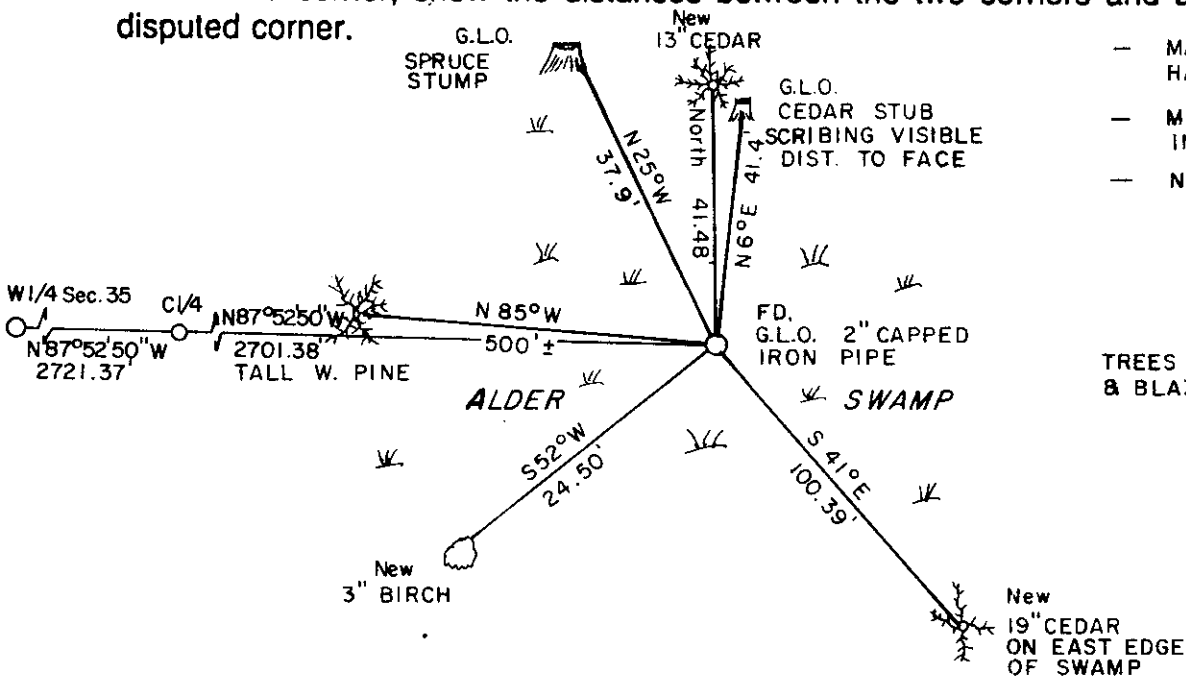
(a) Corner location: Township 38 North  
 Range 11 East/West  
 Town/City/Village of THREE LAKES  
 County of ONEIDA



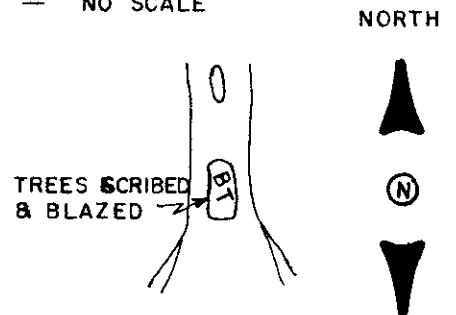
(b) (f) (g) (h) Description of monument found at this corner and if it was accepted, state all evidence (material, testimonial, occupational, plats, records, other monuments) used as a basis for accepting. If not accepted or if nothing was found, state evidence used as basis for establishing location. If reestablished through lost corner proportionate methods, indicate all monuments, distances and directions used to establish.

- 1859 William E. Daugherty established original corner @ 40.00 chains North of SE corner. B.T.s; Tam. 8 N 82 E 6, Tam. 10 S 26 W 9.
- 1941 Hugh B. Crawford, a surveyor with the General Land Office executed a resurvey of Sec. 35 and found no remaining evidence of the original corner position, and set a 2" x 36" capped iron post @ proportionate distance and made the following B.T.s; Cedar 7 N 6 1/2 E 63 lks. , Spruce 7 N 25 W 57 1/2 lks.
- at this corner I found the G.L.O. capped iron pipe in good condition, and recovered the two G.L.O. B.T.s. I accepted the monument and made the following witnesses.

(c) (d) (e) Plan view of corner with ties to at least 4 witness monuments. If in disagreement with previously established corner, show the distances between the two corners and also indicate the ties to the disputed corner.

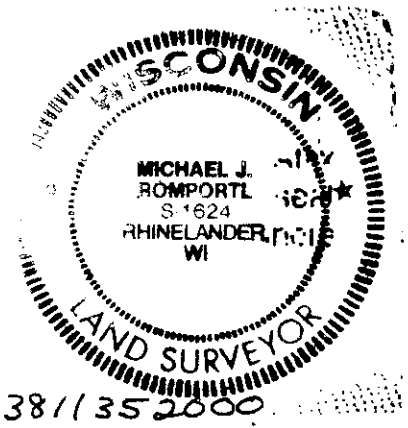


- MAGNETIC BEARINGS WITH HAND HELD COMPASS
- MEASURED TO 6" NAIL IN SIDES OF TREES
- NO SCALE



(i) I, MICHAEL J. ROMPORTL R.L.S. 1624  
 (type or print name) certify that the corner location on this record was determined by me or under my direction and control and that this U.S. Public Land Survey Monument Record is correct and complete to the best of my knowledge and belief.

Michael J. Romportl May 31, 1985  
 Signature Date  
 GENISOT. & ASSOCIATES, INC. - 1512 EAGLE ST., RHINELANDER, WIS.



Index No. X-21