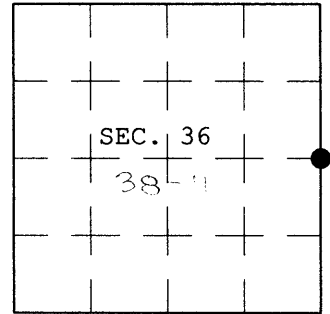


U.S. PUBLIC LAND SURVEY MONUMENT RECORD

Note: This form is intended and designed to fulfill all requirements of Wisconsin Administrative Code, Chapter A-E 7.08 U.S. Public Land Survey Monument Record (3) (a) (b) (c) (d) (e) (f) (g) (h) (i). An additional sheet may be added if necessary to conform with said requirements.

(a) CORNER LOCATION: Plane Coordinates
 1/4 Corner of Secs. 31 & 36 X:
 Township 38 North Y:
 Range 11 & 12 East, 4th P.M. Datum:
 Town of Three Lakes County of Oneida



(b) HISTORY OF ORIGINAL CORNER ESTABLISHMENT

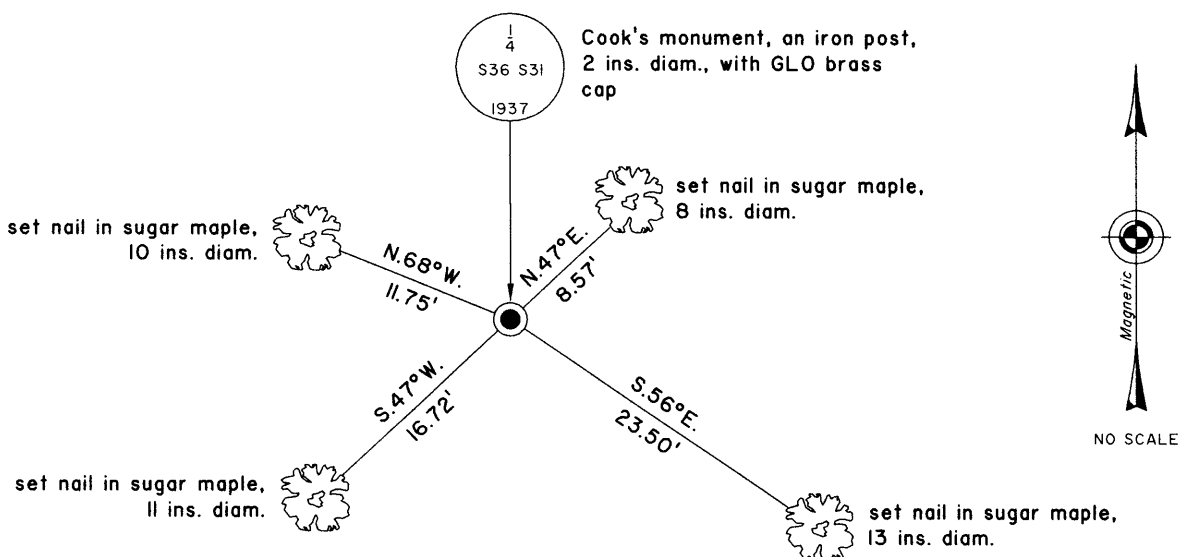
Original Surveyor: Alfred Millard Original Accessories:
 Date of Survey: Commenced June, 1858 yellow birch 18" N.32°W., 42 lks.
 Completed June, 1858 lynn 18" S.25°E., 18 lks.

(b) (f) (g) (h) Description of monument found at this corner and if it was accepted, state all evidence (material, testimonial, occupational, plats, records, other monuments) used as a basis for accepting. If not accepted or if nothing was found, state evidence used as basis for establishing location. If re-established through lost corner proportionate methods, indicate all monuments, distances and directions used to establish. Indicate type of monument and sign post found or set.

June 1937 - Sept. 1938: Wesson Cook, General Land Office surveyor, set an iron post with brass cap, 36 ins. long, 2 ins. diam., at the proportionate distance. He established new bearing trees: a maple, 5 ins. diam., bears N.19-1/4°E., 56 lks. dist., and a maple, 12 ins. diam., bears S.83-1/4°W., 95 lks. dist.

2 November 2003: I found and accepted Cook's monument, a 2 ins. diam. iron post, projecting 10 ins. above the ground with GLO brass cap mkd. as shown below. I found Cook's fallen maple, 12 ins. diam., bears N.19°E., 56 lks. dist., and Cook's fallen maple, bears S.83°W., 95 lks. dist. I established accessories as shown below and set a plastic sign post bearing East, 1 ft. dist.

(c) (d) (e) Plan view of corner with ties to at least 4 witness monuments. If in disagreement with previously established corner, show the distances between the two corners and also indicate the ties to the disputed.



(i) I, Jeffrey W. Austin, Registered Land Surveyor No. S-1885, hereby certify upon honor that the corner location on this record was determined by me or under my direction and control and that this U.S. Public Land Survey Monument Record is correct and complete to the best of my knowledge and belief.

Signature

5 MAR 2004
Date



3811362000