

CERTIFIED LAND CORNER RESTORATION

State of Wisconsin }
County of Price } ss.

I, Elwood L. Olson, do hereby certify that on the 26th day of April, 1973, I found evidence of the Section corner of Sections 13-18-19-24, Township 39 North, Range 3 and 4 East, Fourth Principal Meridian, as described hereon; and that from this evidence I established a new monument and accessories as described hereon to perpetuate the original location of this corner:

Description of original monument and accessories and subsequent restorations:

From B.L.M. Resurvey Notes of 1936: Proportionate distance. No remaining evidence of orig. post or bearing trees. Set iron post 3 ft. long, 2" dia., 27" in ground with brass cap marked "T39N, R3E, R4E, S13, S18, S19, S24, 1936."

New bearing trees: Spruce 4", N82°E, 23.1 feet.
Spruce 6", S53°W, 21.8 feet.
Poplar 9", S41°E, 2.0 feet.
Tamarac 5", N61°W, 33.7 feet.

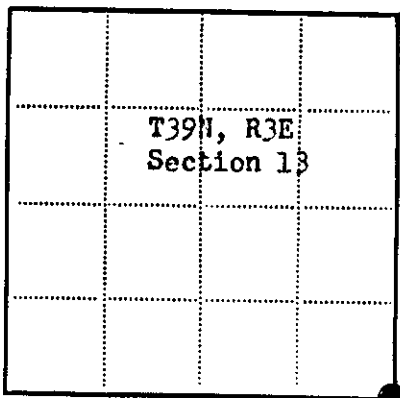
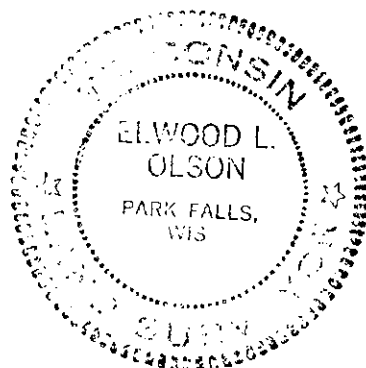
Description of corner evidence found:

Found the 1936 B.L.M. monument in place, extending 10" above ground. The corner is on the south edge of a swamp and approx. 95 ft. east of an old road bearing N13°E. I found the 1936 B.L.M. bearing trees as follows:

Rotted Spruce stump with scribe mark, N83°E, 23.1 feet.
Poplar stump 17" (cut), S41°E, 2 feet.
Remains of stump, S53°W, 21.8 feet.
Tamarac 9", N60°W, 33.4 feet, blaze grown over. I blazed and scribed this tree "BT" at base.

Description of monument and accessories I established to perpetuate the original location of this corner:

Set iron sign post 3.7 feet south of corner.
Blazed and scribed new bearing trees as follows:
Balsam 8", S28°W, 46.8 feet.
Balsam 5", S45°E, 26.6 feet.



● - Corner monument restored
□ -

Resident witnesses.....

Dated at Park Falls Wisconsin, this 19th day of November 1973.

Signature Elwood L. Olson Title Registered Land Surveyor
(County Surveyor, Registered Land Surveyor, or other duly authorized official)

Surveyors Registration No. S-785

Office of..... County of.....

I hereby certify that the within instrument was filed in this office for record on the..... day of..... 19....., and was filed in Book No..... Page No..... of County Records.

Signature..... Title.....

Township..... Range..... Section....., Index No....., Page No.....

RECORDED 4 27 1974 9:00 AM. PERT. LAND COR REST BK VOL 1 PF 22 DOC # 196005

3903130000

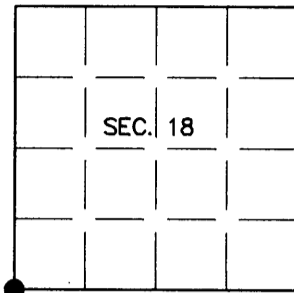
(39-4) 7-1

11-25

U.S. PUBLIC LAND SURVEY MONUMENT RECORD

Note: This form is intended and designed to fulfill all requirements of Wisconsin Administrative Code, Chapter A-E 7.08 U.S. Public Land Survey Monument Record (3)(a)(b)(c)(d)(e)(f)(g)(h)(i). An additional sheet may be added if necessary to conform with said requirements.

(a) CORNER LOCATION: Plane Coordinates
 Cor. of Secs. 13, 18, 19 & 24 X:
 Township 39 North Y:
 Range 3 & 4 East of the 4th P.M. Datum:
 Town of Minocqua County of Oneida



(b) HISTORY OF ORIGINAL CORNER ESTABLISHMENT

Original Surveyor: Alexander Anderson
 Date of Survey: Commenced July, 1864
 Completed Aug., 1864

Original Accessories:

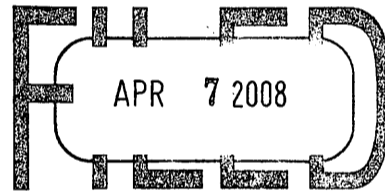
Birch 7" N41°W, 31 lks.
 Birch 10" N30°E, 32 lks.
 Cedar 7" S38°E, 22 lks.
 Cedar 6" S50°W, 9 lks.

(b)(f)(g)(h) Description of monument found at this corner and if it was accepted, state all evidence (material, testimonial, occupational, plats, records, other monuments) used as a basis for accepting. If not accepted or if nothing was found, state evidence used as basis for establishing location. If re-established through lost corner proportionate methods, indicate all monuments, distances and directions used to establish. Indicate type of monument and sign post found or set.

NOTE: This is a perpetuation of a previous USPLS Monument Record by Elwood L. Olson, RLS dated November 19, 1973 and filed in the office of the Oneida County Register of Deeds. A complete history of the corner can be found on the previous monument record. I accept the previous location as a true and faithful perpetuation or reestablishment of the original corner location and further perpetuate it as follows.

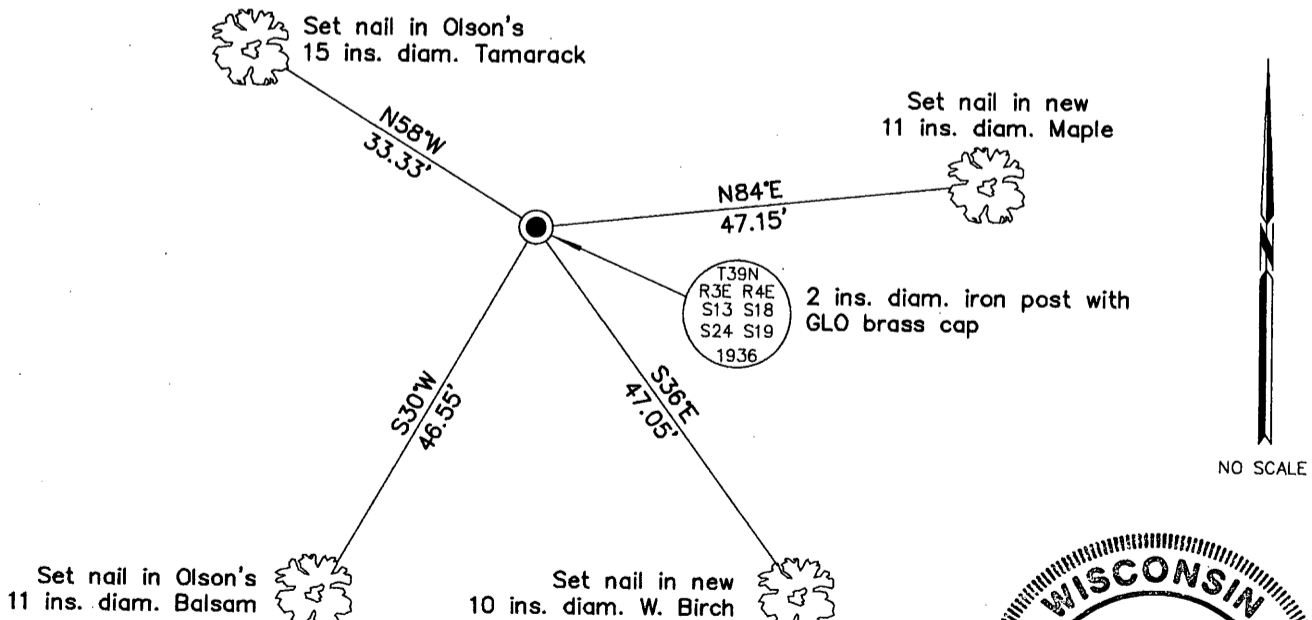
29 July 2005: I found and accepted a 2 ins. diam. iron post with GLO brass cap projecting 10 ins. above the bog. All of Olson's trees gone except those shown below. I found or established accessories as shown below and found a USFS steel sign post bearing South, 3.7 ft. dist.

REGISTER OF DEEDS OFFICE
 ONEIDA COUNTY, WIS.



At _____ O'Clock _____ M
THOMAS H. LEIGHTON
 REGISTER OF DEEDS

(c)(d)(e) Plan view of corner with ties to at least 4 witness monuments. If in disagreement with previously established corner, show the distances between the two corners and also indicate the ties to the disputed.



(i) I, Jeffrey W. Austin, Registered Land Surveyor No. S-1885, hereby certify upon honor that the corner location on this record was determined by me or under my direction and control and that this U.S. Public Land Survey Monument Record is correct and complete to the best of my knowledge and belief.

Signature

MAR. 3, 2008
 Date



INDEX NO. N-1 (3903130000)