

CERTIFIED LAND CORNER RESTORATION

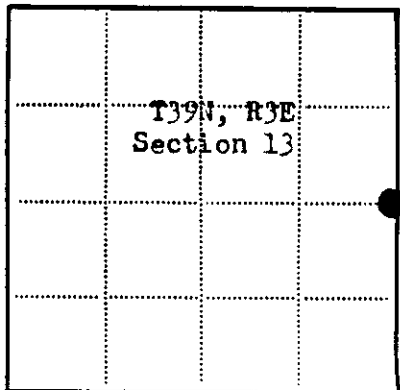
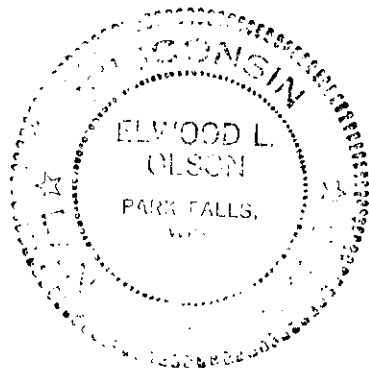
State of Wisconsin }
County of Price } ss.

I Elwood do hereby certify that on the 26th day of April 1973 I found evidence of the Quarter corner of Sections 13 and 16 Township 37 North Range 3 and 4 East, Fourth Principal Meridian, as described hereon; and that from this evidence I established a new monument and accessories as described hereon to perpetuate the original location of this corner:

Description of original monument and accessories and subsequent restorations: From B.L.M. Resurvey Notes of 1936: Proportionate distance. No remaining evidence of orig. post or bearing trees. Set iron post 3 ft. long, 1" dia., 27" in ground, with brass cap mkd. "1/4, S13, S18, 1936." 638 ft. south of corner leave swamp. New bearing trees: Cedar 7", N71°E, 20.5 feet. Cedar 9", S66°W, 19.8 feet.

Description of corner evidence found: Found the 1936 B.L.M. monument laying horizontal, 1 foot under swamp surface. I set the monument upright, firmly in ground, extending 3" above swamp surface, and placed several rocks around it. Found the 1936 B.L.M. bearing trees as follows: Cedar 11" (leans south) S66°W, 20.3 feet. Scribing visible. Cedar stump 9" x 4' high, N72°E, 20.5 feet. Scribe marks "1/4 S18 RT" on stump.

Description of monument and accessories I established to perpetuate the original location of this corner: Set iron sign post 1.1 feet S. of corner. Blazed and scribed new bearing trees as follows: Cedar 8", S72°E, 31.2 feet. Cedar 7", N59°E, 20.7 feet.



Legend: Solid circle = Corner monument restored; Open square =

Resident witnesses.....

Dated at Park Falls, Wisconsin, this 19th day of November 1973

Signature Elwood L. Olson Title Registered Land Surveyor (County Surveyor, Registered Land Surveyor, or other duly authorized official)

Surveyors Registration No. S-765

Office of..... County of..... I hereby certify that the within instrument was filed in this office for record on the..... day of..... 19....., and was filed in Book No..... Page No..... of County Records.

Signature..... Title.....

Township....., Range....., Section....., Index No....., Page No.....

3903132000

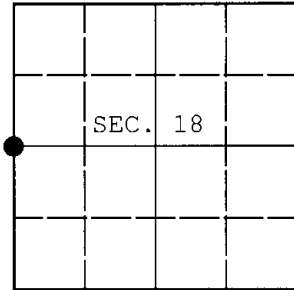
(39-4)

L-2E

**U.S. PUBLIC LAND SURVEY MONUMENT RECORD**

Note: This form is intended and designed to fulfill all requirements of Wisconsin Administrative Code, Chapter A-E 7.08 U.S. Public Land Survey Monument Record (3) (a) (b) (c) (d) (e) (f) (g) (h) (i). An additional sheet may be added if necessary to conform with said requirements.

(a) CORNER LOCATION: WISCRS - Oneida County  
 1/4 Cor. of Secs. 13 & 18 N: 249,080.03 USft  
 Township 39 North E: 102,977.77 USft  
 Range 3 & 4 East of the 4th P.M. Datum: NAD 1983(2011)  
 Town of Minocqua County of Oneida



(b) HISTORY OF ORIGINAL CORNER ESTABLISHMENT

Original Surveyor: Alexander Anderson Original Accessories:  
 Date of Survey: Commenced: July 25, 1864 black ash 12" N23°W, 23 lks.  
 Completed: August 7, 1864 birch 13" N41°E, 27 lks.

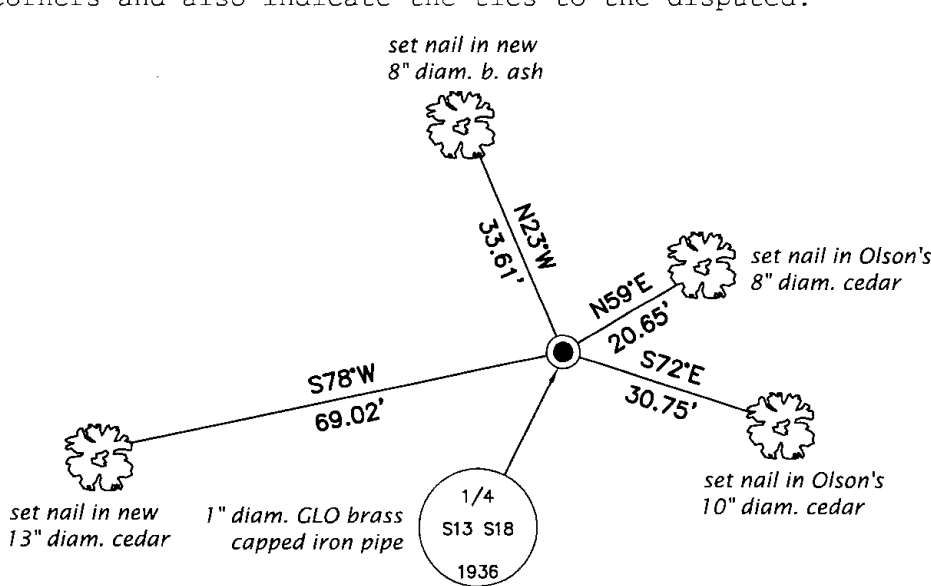
(b) (f) (g) (h) Description of monument found at this corner and if it was accepted, state all evidence (material, testimonial, occupational, plats, records, other monuments) used as a basis for accepting. If not accepted or if nothing was found, state evidence used as basis for establishing location. If re-established through lost corner proportionate methods, indicate all monuments, distances and directions used to establish. Indicate type of monument and sign post found or set.

NOTE: This is a perpetuation of a previous USPLS Monument Record by Elwood L. Olson, RLS dated November 19, 1973 and filed in the office of the Price County Surveyor. A complete history of the corner can be found on the previous monument record. I accept the previous location as a true and faithful perpetuation or reestablishment of the original corner location and further perpetuate it as follows.

March 3, 2016: I found and accepted the record monument, a 1" diam. iron pipe with a 2.5" diam. GLO brass cap projecting 8" above the ground surface. The 11" diam. GLO cedar mentioned by Olson is now gone. I found or established accessories as shown below. A USFS steel sign post bears South, 1 ft.

The coordinates shown were derived from two independent RTK observations of the corner point and are referenced to the WISCORS GNSS Network.

(c) (d) (e) Plan view of corner with ties to at least 4 witness monuments. If in disagreement with previously established corner, show the distances between the two corners and also indicate the ties to the disputed.

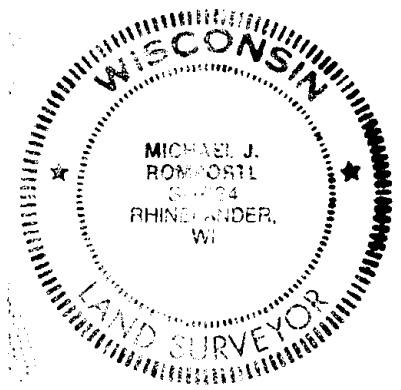


REGISTER OF DEEDS OFFICE  
 ONEIDA COUNTY  
 FILED

DEC 28 2016

AT \_\_\_\_\_ O'CLOCK \_\_\_\_\_ M  
 KYLE J. FRANSON  
 REGISTER OF DEEDS

(i) I, Michael J. Romportl, Professional Land Surveyor No. S-1624, hereby certify that the corner location on this record was determined by me or under my direction and control and that this U.S. Public Land Survey Monument Record is correct and complete to the best of my knowledge and belief.



Michael J Romportl 12/23/2016  
 Signature Date