

At \_\_\_\_\_ O'Clock \_\_\_\_\_ M  
**THOMAS E. LEIGHTON**  
REGISTER OF DEEDS  
U.S. PUBLIC LAND SURVEY MONUMENT RECORD

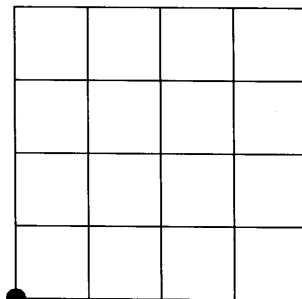
Note: This form is intended and designed to fulfill all requirements of the Wisconsin Administrative Code, Chapter A-E 7.08 U.S. Public Land Monument Record (3)(a)(b)(c)(d)(e)(f)(g)(h)(i). An additional sheet may be added if necessary to conform with said requirements.

(a) CORNER LOCATION:

Southwest corner of Section 31  
Township 39 North  
Range 4 East  
Town of Minocqua  
County of Oneida  
Wisconsin

COORDINATES

North: 230701.1212  
East: 102317.0860  
Control Station: FIFIELD E GPS - 201S  
Latitude: 45° 49' 03.54868" N  
Longitude: 90° 02' 42.62420" W  
Datum: Oneida County Grid (NAD 83 - 1991)  
Method: Real Time Kinetic GPS (Direct)



SECTION 31

(b) HISTORY OF ORIGINAL CORNER ESTABLISHMENT

Original Surveyor: Alexander Anderson - Set post for corner  
Date of Survey: Commenced - July 25, 1864  
Completed - August 7, 1864

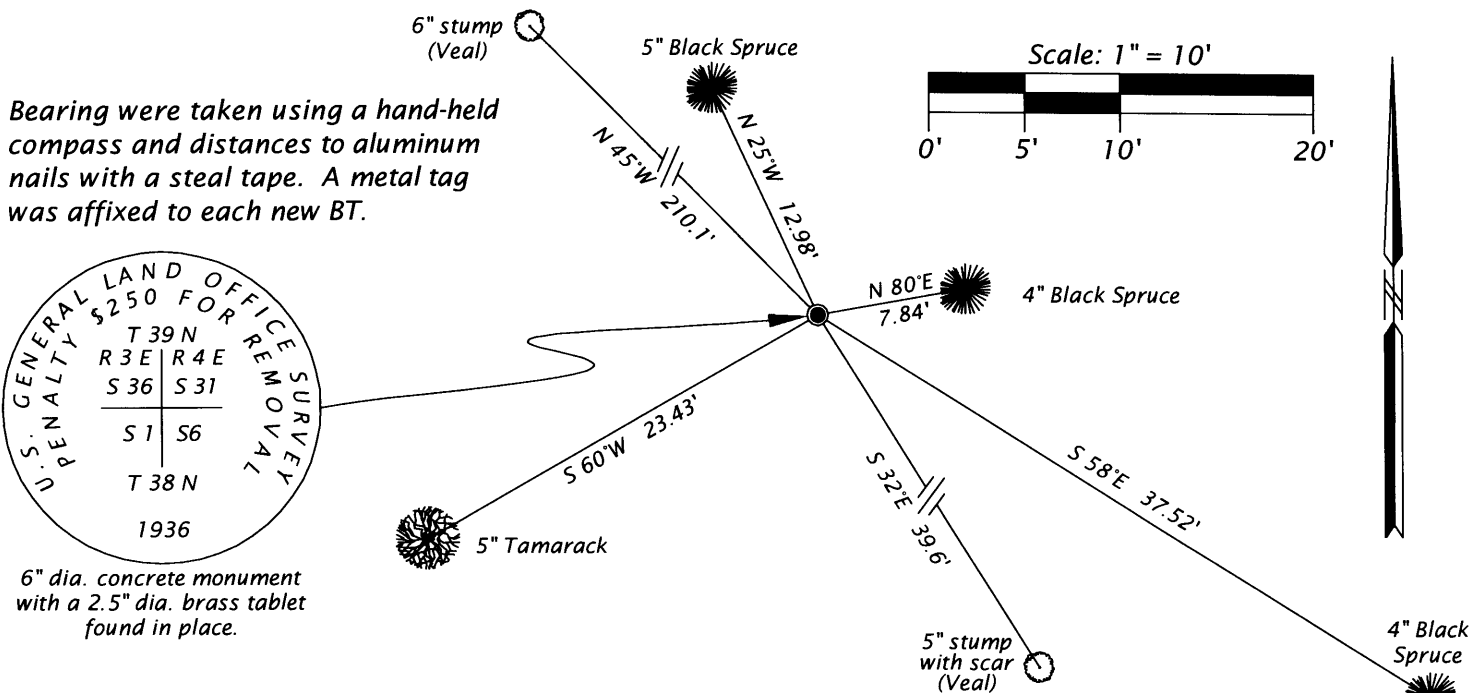
Original B.T.'S - 5" Tamarack, N 43°W, 2 links  
5" Tamarack, N 52°E, 31 links  
5" Tamarack, S 28°E, 32 links  
7" Tamarack, S 50°W, 7 links

(f)(g)(h) DESCRIPTION OF MONUMENT FOUND AT THIS CORNER AND IF IT WAS ACCEPTED, STATE ALL EVIDENCE (MATERIAL, TESTIMONIAL, OCCUPATIONAL, PLATS, RECORDS, OTHER MONUMENTS) USED AS A BASIS FOR ESTABLISHING LOCATION. IF NOT ACCEPTED OF IF NOTHING WAS FOUND, STATE EVIDENCE USED AS BASIS FOR ESTABLISHING LOCATION. IF REESTABLISHED THROUGH LOST CORNER PROPORTIONATE METHODS, INDICATE ALL MONUMENTS, DISTANCES AND DIRECTIONS USED TO ESTABLISH. INDICATE TYPE OF MONUMENT AND SIGN POST FOUND OR SET.

August 1936 - Guy R. Veal, Cadastral Engineer, performed a Dependent Resurvey in Township 39 North, Range 3 East. He found and accepted a wooden post harmoniously related to existing corners. At point for corner he set a 6" dia. concrete monument with brass tablet and made BTs as follows: 5" Spruce, N 60.5°E, 59 links; 5" Spruce, S 32.25°E, 60 links; 6" Spruce, S 84°W, 479 links; 6" Spruce, N 45°W, 318 links.

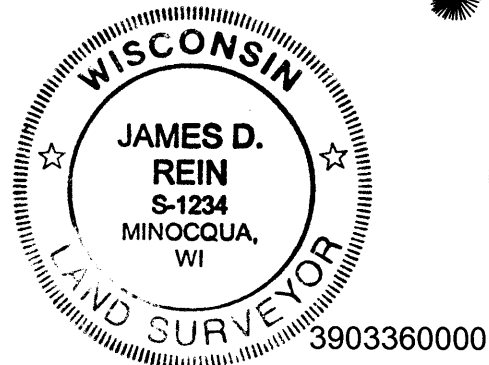
April 28, 2005 - I, James D. Rein found Veal's 6" dia. concrete monument with brass tablet in place. I found two (2) of Veal's BT stumps and made four (4) new BTs as noted on sketch below.

(c)(d)(e) PLAN VIEW OF CORNER WITH TIES TO AT LEAST 4 WITNESS MONUMENTS. IF IN DISAGREEMENT WITH PREVIOUSLY ESTABLISHED CORNER, SHOW THE DISTANCE BETWEEN THE TWO CORNERS AND ALSO INDICATE THE TIES TO THE DISPUTED CORNER.



(i) I, JAMES D. REIN, REGISTERED LAND SURVEYOR NO. S-1234 HEREBY CERTIFY THAT THE CORNER LOCATION ON THIS RECORD WAS DETERMINED BY ME OR UNDER MY DIRECTION AND CONTROL AND THAT THIS U.S. PUBLIC LAND SURVEY MONUMENT RECORD IS CORRECT AND COMPLETE TO THE BEST OF MY KNOWLEDGE AND BELIEF.

*[Signature]*  
SIGNATURE  
DATE 3/26/07



INDEX NO. 2-1