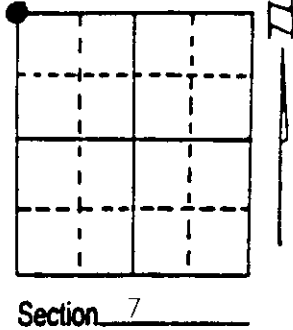


U.S. PUBLIC LAND SURVEY MONUMENT RECORD

Note: This form is intended and designed to fulfill all requirements of Wisconsin Administrative Code, Chapter A-E 7.08 U.S. Public Land Survey Monument Record (3) (a) (b) (c) (d) (e) (f) (g) (h) (i). An additional sheet may be added if necessary to conform with said requirements.

(a) Corner location: Township 39 North
 Range 5 East/West

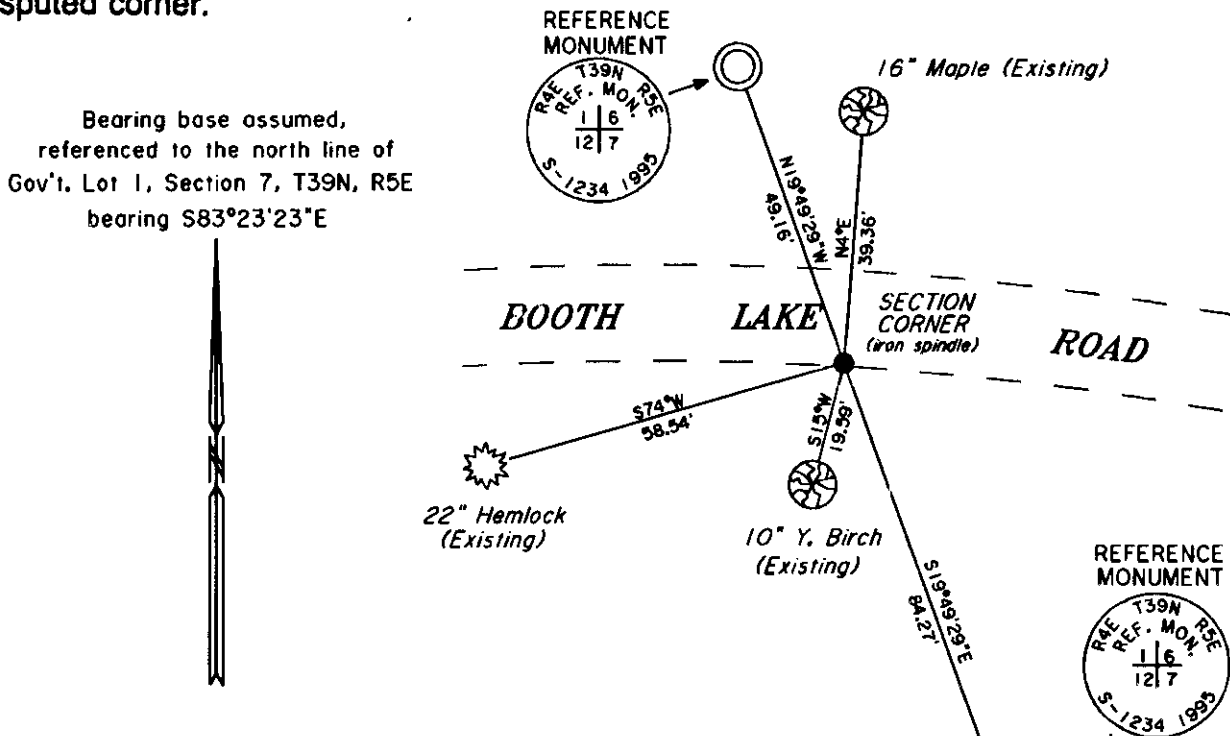
Town/City/Village Minocqua
 County Oneida



(b) (f) (g) (h) Description of monument found at this corner and if it was accepted, state all evidence (material, testimonial, occupational, plats, records, other monuments) used as a basis for accepting. If not accepted or if nothing was found, state evidence used as basis for establishing location. If reestablished through lost corner proportionate methods, indicate all monuments, distances and directions used to establish. Indicate type of monument found or set and sign post.

- Sept. 22nd, 1860 - Alfred Millard, Deputy Surveyor, set post for corner to Sections 1 and 6, Range 4 East and Sections 6 and 7, Range 5 East referenced by four bearing trees: 12" Y. Birch bearing S75°W, 27 links; 12" Y. Birch bearing N15°E, 29 links; 10" Hemlock bearing N58°W, 11 links; and an 18" Hemlock bearing S58°E, 14 links.
- Sept. 1961 - William S. Cameron, Registered Land Surveyor, identifies this corner on his map as being referenced by a 20" Hemlock bearing S70°W, 58.5 feet.
- April 19th, 1983 - Gerald Boyd Inman, Registered Land Surveyor, identifies corner on map, as being monumented with a 1 1/4" iron rod found in place, referenced by three bearing trees: 17" Hemlock bearing S70°W, 58.5 feet; 8" Y. Birch bearing S14°W, 19.1 feet; and a 14" Maple bearing N3°E, 39.0 feet.
- Jan. 20th, 1995 - James D. Rein, Registered Land Surveyor, found the corner monument obliterated by road improvement. Re-established the corner position from the three bearing trees noted above. Set an iron spindle in frozen roadbed and placed aluminum capped reference monuments as shown in plan view. Set a plastic marker post 1 foot West of the northerly reference monument.

(c) (d) (e) Plan view of corner with ties to at least 4 witness monuments. If in disagreement with previously established corner, show the distances between the two corners and also indicate the ties to the disputed corner.



Bearing base assumed, referenced to the north line of Gov't. Lot 1, Section 7, T39N, R5E bearing S83°23'23"E

(i) I, James D. Rein, Registered Land Surveyor No. 1234
 (type or print name) certify that the corner location on this record was determined by me or under my direction and control and that this U.S. Public Land Survey Monument Record is correct and complete to the best of my knowledge and belief.

James D. Rein Signature
 January 24th, 1995 Date



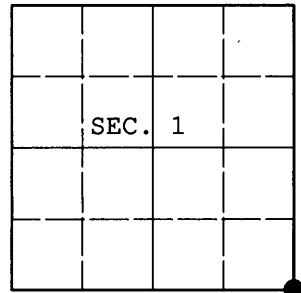
Index No. E-1

Stamp: 3904010000

U.S. PUBLIC LAND SURVEY MONUMENT RECORD

Note: This form is intended and designed to fulfill all requirements of Wisconsin Administrative Code, Chapter A-E 7.08 U.S. Public Land Survey Monument Record (3) (a) (b) (c) (d) (e) (f) (g) (h) (i). An additional sheet may be added if necessary to conform with said requirements.

(a) CORNER LOCATION: WISCRS (Oneida County)
 Cor. of Secs. 1, 6, 7 & 12 N: 257,073.776 USft
 Township 39 North E: 134,032.618 USft
 Range 4 & 5 East of the 4th P.M. Datum: NAD 1983(2007)
 Town of Minocqua County of Oneida



(b) HISTORY OF ORIGINAL CORNER ESTABLISHMENT

Original Surveyor: Alfred Millard	Original Accessories:
Date of Survey: Commenced: Sept. 22, 1860	y. birch 12" S75°W, 27 lks.
Completed: Sept. 22, 1860	y. birch 12" N15°E, 29 lks.
	hemlock 10" N58°W, 11 lks.
	hemlock 18" S58°E, 14 lks.

(b) (f) (g) (h) Description of monument found at this corner and if it was accepted, state all evidence (material, testimonial, occupational, plats, records, other monuments) used as a basis for accepting. If not accepted or if nothing was found, state evidence used as basis for establishing location. If re-established through lost corner proportionate methods, indicate all monuments, distances and directions used to establish. Indicate type of monument and sign post found or set.

NOTE: This is a perpetuation of a previous USPLS Monument Record by James D. Rein, RLS dated January 24, 1995 and filed in the office of the Oneida County Register of Deeds. A complete history of the corner can be found on the previous monument record. I accept the previous location as a true and faithful perpetuation or reestablishment of the original corner location and further perpetuate it as follows.

March 6, 2013: I found and accepted a perpetuation of Rein's monument, a PK nail in the pavement of Booth Lake Road. Rein's accessories were found in substantial agreement with his previous record and were not remeasured as the sole purpose of this work is to report the coordinates of the corner point.

The coordinates shown were derived from offset static GPS observations referenced to a VRS control point generated by the WISCORS network.

(c) (d) (e) Plan view of corner with ties to at least 4 witness monuments. If in disagreement with previously established corner, show the distances between the two corners and also indicate the ties to the disputed.

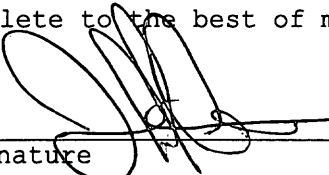
REGISTER OF DEEDS OFFICE
 ONEIDA COUNTY
 FILED

APR 11 2013

AT _____ O'CLOCK _____ M
 KYLE J. FRANSON
 REGISTER OF DEEDS

(i) I, Jeffrey W. Austin, Registered Land Surveyor No. S-1885, hereby certify that the corner location on this record was determined by me or under my direction and control and that this U.S. Public Land Survey Monument Record is correct and complete to the best of my knowledge and belief.



Signature 

MAR 26, 2013
 Date