

At O'Clock M
U.S. PUBLIC LAND SURVEY MONUMENT RECORD
REGISTER OF DEEDS

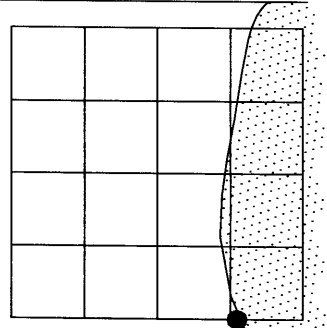
Note: This form is intended and designed to fulfill all requirements of the Wisconsin Administrative Code, Chapter A-E 7.08 U.S. Public Land Monument Record (3)(a)(b)(c)(d)(e)(f)(g)(h)(i). An additional sheet may be added if necessary to conform with said requirements.

(a) CORNER LOCATION:

Meander Corner on the westerly shore of
Buckskin Lake, south line of Section 2
Township 39 North
Range 4 East
Minocqua Township
County of Oneida
State of Wisconsin

COORDINATES

North: 256694.9694
East: 127312.2099
Control Station: Lac du Flambeau W. #310S
Latitude: 45° 53' 21.5362" N
Longitude: 89° 56' 51.5989" W
Datum: Oneida County Grid (NAD 83 - 1991)
Method: Real Time Kinetic GPS (Direct)



SECTION 2

(b) HISTORY OF ORIGINAL CORNER ESTABLISHMENT

Original Surveyor: Alexander Anderson, set meander corner
Date of Survey: Commenced - May 9, 1865
Completed - May 22, 1865

Original B.T.'S: 6" Tamarack, N 88°W, 20 links
8" Spruce, S 50°W, 28 links

(f)(g)(h) DESCRIPTION OF MONUMENT FOUND AT THIS CORNER AND IF IT WAS ACCEPTED, STATE ALL EVIDENCE (MATERIAL, TESTIMONIAL, OCCUPATIONAL, PLATS, RECORDS, OTHER MONUMENTS) USED AS A BASIS FOR ESTABLISHING LOCATION. IF NOT ACCEPTED OF IF NOTHING WAS FOUND, STATE EVIDENCE USED AS BASIS FOR ESTABLISHING LOCATION. IF REESTABLISHED THROUGH LOST CORNER PROPORTIONATE METHODS, INDICATE ALL MONUMENTS, DISTANCES AND DIRECTIONS USED TO ESTABLISH. INDICATE TYPE OF MONUMENT AND SIGN POST FOUND OR SET.

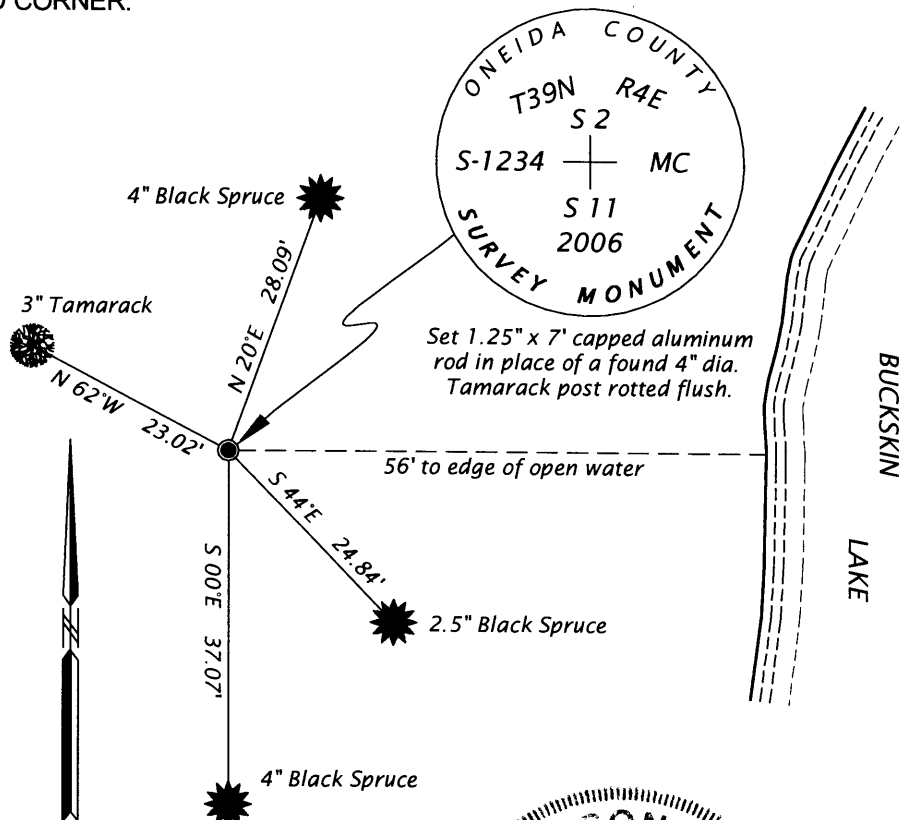
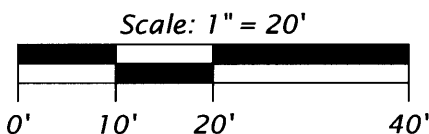
February 27, 1941 - Civilian Conservation Corps crew consisting of Hall, Crace, Miller, & O'Connor, "old MC post found. No sign of US bearings but find old Tam. blaze." as per field notes in Oneida County CCC Book 13, page 33.

1982 - Charles Winkler notes Meander Corner as a "Sq Post by Others" on a Foltz & Assoc. workmap of survey work and breakdown of the area.

October 25, 2006 - I, James D. Rein, found an old 4" dia. x 3.5' long Tamarack post rotted flush to bog level and SET a 1.25" x 7' capped aluminum rod in place of the post. I reset post point on the south edge of monument and a white plastic marker post 0.7' north on the south edge of snowmobile trail. Made four (4) new bearing trees as noted in sketch below.

(c)(d)(e) PLAN VIEW OF CORNER WITH TIES TO AT LEAST 4 WITNESS MONUMENTS. IF IN DISAGREEMENT WITH PREVIOUSLY ESTABLISHED CORNER, SHOW THE DISTANCE BETWEEN THE TWO CORNERS AND ALSO INDICATE THE TIES TO THE DISPUTED CORNER.

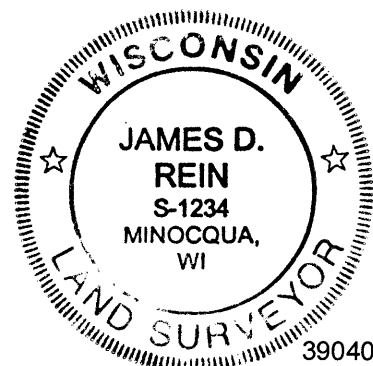
Bearings taken using a hand-held compass and distances with a steel tape to aluminum nails. The 3" Tamarack and 2.5" Black Spruce bearing trees were marked "BT" into the bark and the two (2) 4" Black Spruce bearing trees were scribed and marked "BT".



(i) I, JAMES D. REIN, REGISTERED LAND SURVEYOR NO. S-1234 HEREBY CERTIFY THAT THE CORNER LOCATION ON THIS RECORD WAS DETERMINED BY ME OR UNDER MY DIRECTION AND CONTROL AND THAT THIS U.S. PUBLIC LAND SURVEY MONUMENT RECORD IS CORRECT AND COMPLETE TO THE BEST OF MY KNOWLEDGE AND BELIEF.

[Handwritten Signature]
SIGNATURE

11-14-2006
DATE



INDEX NO. E 20-21