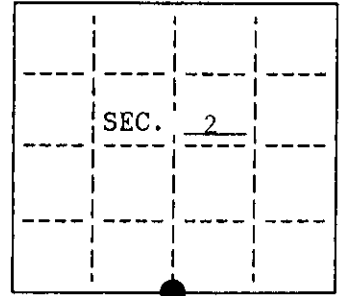


U.S. PUBLIC LAND SURVEY MONUMENT RECORD

Note: This form is intended and designed to fulfill all requirements of Wisconsin Administrative Code, Chapter A-8 7.08 U.S. Public Land Survey Monument Record (3)(a)(b)(c)(d)(e)(f)(g)(h)(i). An additional sheet may be added if necessary to conform with said requirements.

(a) CORNER LOCATION: State Plane Coordinates
S 1/4 corner of Sec. 2 X _____
 Township 39 North Y _____
 Range 4 East Datum Base _____
 Town XXX Minocqua County of Oneida



(b) HISTORY OF ORIGINAL CORNER ESTABLISHMENT
 Original Surveyor: Alex Anderson Original B.T.'s
 Date of Survey: Commenced May, 1865 Hemlock 10" S70 E 14 lks.
 Completed May, 1865 Hemlock 10" N13 W 23 lks.

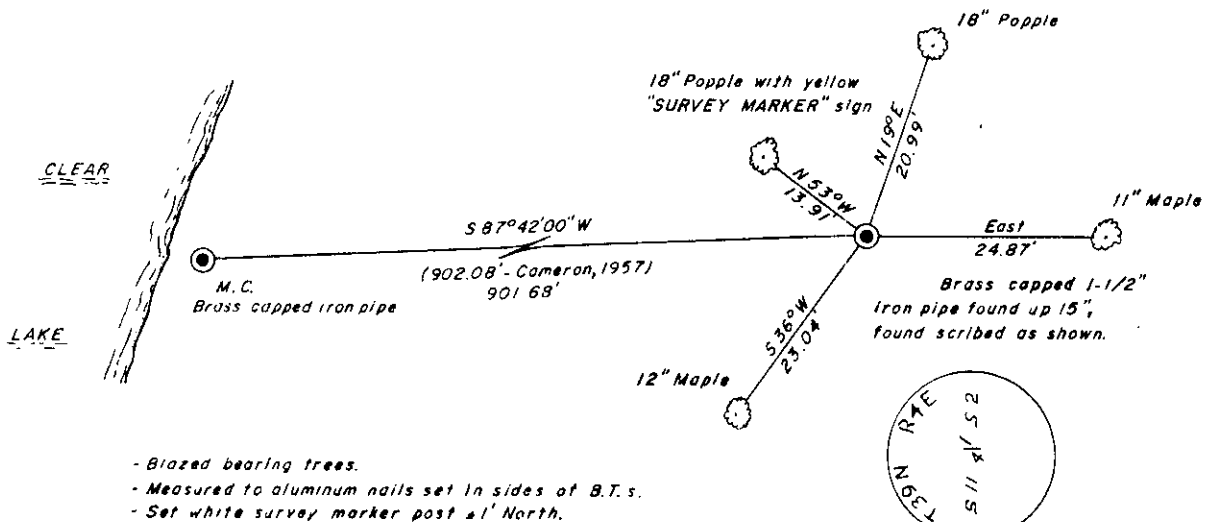
(b)(f)(g)(h) Description of monument found at this corner and if it was accepted, state all evidence (material, testimonial, occupational, plats, records, other monuments) used as a basis for accepting. If not accepted or if nothing was found, state evidence used as basis for establishing location. If reestablished through lost corner proportionate methods, indicate all monuments, distances and directions used to establish. Indicate type of monument and sign post found or set.

1865 - Deputy Surveyor, Alex Anderson set 1/4 post and made B.T.'s.

1957 - William S. Cameron found and accepted a brass-capped iron pipe for the S 1/4.

1998 - I found and accepted a 1 1/2" brass-capped iron pipe as the S 1/4 corner.

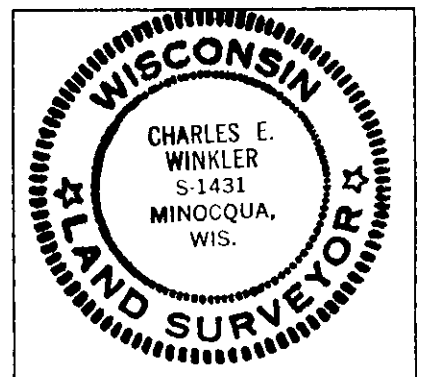
(c)(d)(e) Plan view of corner with ties to at least 4 witness monuments. If in disagreement with previously established corner, show the distances between the two corners and also indicate the ties to the disputed.



- Blazed bearing trees.
- Measured to aluminum nails set in sides of B.T.'s.
- Set white survey marker post 1/4 North.

(i) I, Charles E. Winkler, S-1431 hereby certify that the corner location on this record was determined by me or under my direction and control and that this U.S. Public Land Survey Monument Record is correct and complete to the best of my knowledge and belief.

Charles E. Winkler 8/18/98
 Signature Date
 Foltz and Associates, Inc.



INDEX NO. E 19

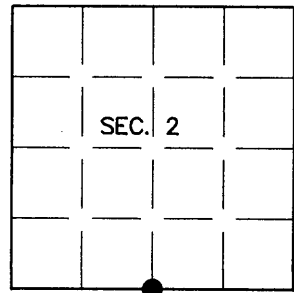
3904020020

U.S. PUBLIC LAND SURVEY MONUMENT RECORD

Note: This form is intended and designed to fulfill all requirements of Wisconsin Administrative Code, Chapter A-E 7.08 U.S. Public Land Survey Monument Record (3)(a)(b)(c)(d)(e)(f)(g)(h)(i). An additional sheet may be added if necessary to conform with said requirements.

(a) CORNER LOCATION:
 1/4 Cor. of Secs. 2 & 11
 Township 39 North
 Range 4 East of the 4th P.M.
 Town of Minocqua

Plane Coordinates
 X:
 Y:
 Datum:
 County of Oneida



(b) HISTORY OF ORIGINAL CORNER ESTABLISHMENT

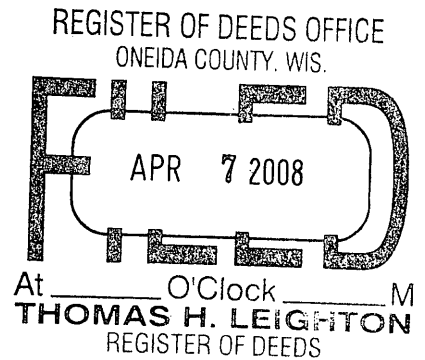
Original Surveyor: Alexander Anderson
 Date of Survey: Commenced May, 1865
 Completed May, 1865

Original Accessories:
 Hemlock 10" S70°E, 14 lks.
 Hemlock 10" N73°W, 23 lks.

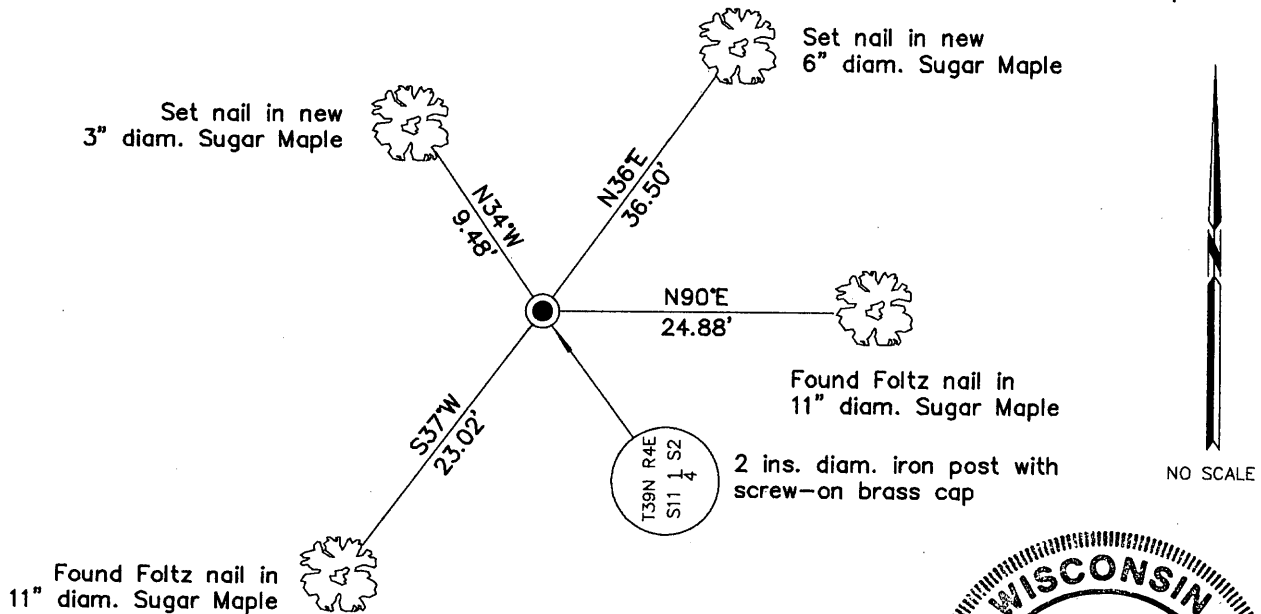
(b)(f)(g)(h) Description of monument found at this corner and if it was accepted, state all evidence (material, testimonial, occupational, plats, records, other monuments) used as a basis for accepting. If not accepted or if nothing was found, state evidence used as basis for establishing location. If re-established through lost corner proportionate methods, indicate all monuments, distances and directions used to establish. Indicate type of monument and sign post found or set.

NOTE: This is a perpetuation of a previous USPLS Monument Record by Charles E. Winkler, RLS dated August 18, 1998 and filed in the office of the Oneida County Register of Deeds. A complete history of the corner can be found on the previous monument record. I accept the previous location as a true and faithful perpetuation or reestablishment of the original corner location and further perpetuate it as follows.

16 November 2005: I found and accepted a 2 ins. diam. iron post with screw-on brass cap projecting 16 ins. above the ground. Both of Winkler's aspen either dead or wind-thrown. I found or established accessories as shown below and set a white plastic sign post bearing Northeast, 1 ft. dist.



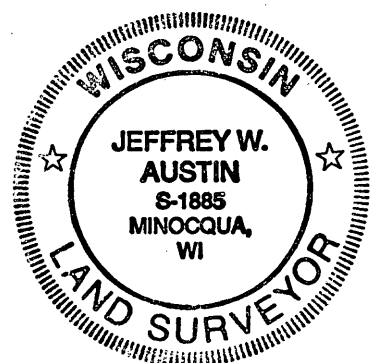
(c)(d)(e) Plan view of corner with ties to at least 4 witness monuments. If in disagreement with previously established corner, show the distances between the two corners and also indicate the ties to the disputed.



(i) I, Jeffrey W. Austin, Registered Land Surveyor No. S-1885, hereby certify upon honor that the corner location on this record was determined by me or under my direction and control and that this U.S. Public Land Survey Monument Record is correct and complete to the best of my knowledge and belief.


 Signature

MAR. 3, 2008
 Date



INDEX NO. E-19 (3904020020)