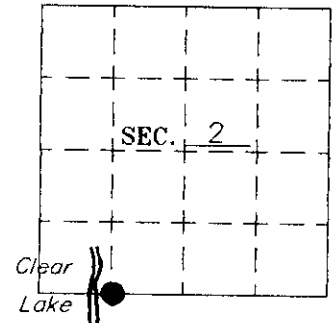


U. S. PUBLIC LAND SURVEY MONUMENT RECORD

Note: This form is intended and designed to fulfill all requirements of Wisconsin Administrative Code—Chapter A-E 7.08 U. S. Public Land Survey Monument Record (3(a)(b)(c)(d)(e)(f)(g)(h)(i). An additional sheet may be added if necessary to conform with said requirements.

(a) CORNER LOCATION: State Plane Coordinates
 Meander corner of Sec. 2 X -----
 Township 39 North Y -----
 Range 4 East Datum Base -----
 Town Minocqua County of Oneida

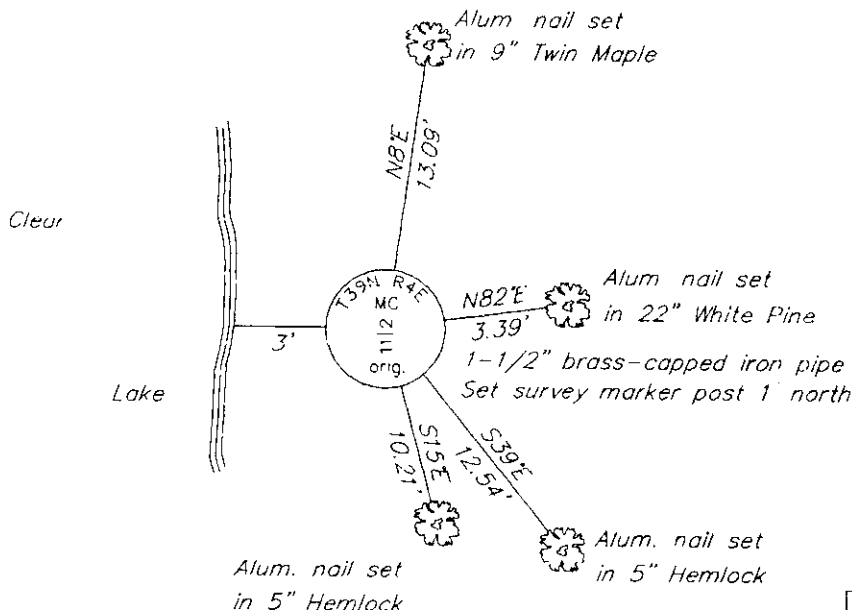


(b) HISTORY OF ORIGINAL CORNER ESTABLISHMENT:
 Original Surveyor: Alex Anderson Original B.T.'S
 Date of Survey: Commenced 1865 10" Pine, N80°E, 11 lks.
 Completed 1865 10" Pine, S50°E, 13 lks.

(b)(f)(g)(h) Description of monument found at this corner and if it was accepted—state all evidence (material—testimonial—occupation—plats—records—other monuments) used as a basis for accepting. If not accepted or if nothing was found state evidence used as basis for establishing location. If reestablished through lost corner proportionate methods indicate all monuments—distances and directions used to establish. Indicate type of monument and sign post found or set.

- 1957 – William S. Cameron found and accepted a brass-capped iron pipe for the meander corner.
- 1989 – Stuth (NEPCO) survey map shows a monument labeled "OR. M.C.".
- 1998 – I found and accepted a 1-1/2" iron pipe with a 2-1/4" brass cap scribed "MC S11 S2 orig.". I made four bearing trees. See sketch below.

(c)(d)(e) Plan view of corner with ties to at least 4 witness monuments. If in disagreement with previously established corner—show the distances between the two corners and also indicate the ties to the disputed.



(i) I Charles E. Winkler S-1431
 hereby certify that the corner location on this record was determined by me or under my direction and control and that this U.S. Public Land Survey Monument Record is correct and complete to the best of my knowledge and belief.

Charles E. Winkler 5/21/1999
 Signature Foltz & Associates, Inc. Date



INDEX NO. E 18-19

3904020027