

CERTIFIED LAND CORNER RESTORATION

Index No. E 15
3904030020

State of Wisconsin } ss.

County of Oneida

I Jerome N. Kraemer do hereby

certify that on the 10th day

of July, 19 78, I found

evidence of the South one-quarter

corner of the Section 3

Township 39 North, Range

4 East, Fourth Principal Meridian,

as described hereon; and that from this evidence

I established a new monument and accessories

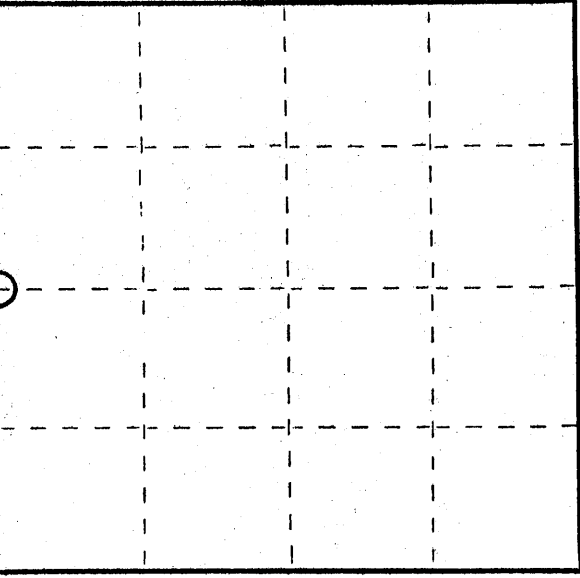
as described hereon to perpetuate the original

location of this corner.

Resident witnesses:

None

Section 3, T39N, R4E



○ = Corner monument restored.

History of original corner establishment:

Corner was established by Alex Anderson, Deputy Surveyor, in May of 1865 and was marked by a wood post, witnessed by a 10" Hemlock bearing S20°E, 10 links and by another 10" Hemlock bearing N15°W, 15 links.

**COPY FROM
WILDERNESS
SURVEYING**

Description of corner evidence found:

No evidence of corner was found.

REGISTER OF DEEDS OFFICE
ONEIDA COUNTY, WIS.

FILED
JUL 23 2009

At O'Clock M
THOMAS H. LEIGHTON
REGISTER OF DEEDS

Description of monument and accessories I established to perpetuate the original location of this corner.

Set a 2" diameter x 30" long Estmsten monument with a stamped 3-1/2" diameter cast aluminum Oneida County Cap on 12 inches. Corner was set on a proportion between the southwest section corner and the west shore of Clear Lake as suggested by Lane Bouman, Bureau of Land Management, Silver Spring, Maryland.

Made bearing trees:

P.K. nail in face of scribed 9" Maple bears N17°W, 26.90 feet

P.K. nail in face of scribed 7" White Birch bears N58°E, 5.15 feet

P.K. nail in face of scribed 7" White Birch bears S17°E, 20.75 feet

Set new scribed cedar post.

Dated at Minocqua, Wis., this 9th day of March, 19 79.

Signature Jerome N. Kraemer Title Registered Land Surveyor Registration No. S-1448
(County Surveyor, Registered Land Surveyor, or other duly authorized official)

Office of Register of Deeds, County of Oneida, I hereby certify that the within instrument was filed in this office for record on the 10th day of July, 19 78 at 10 o'clock A.M.

(Register of Deeds)

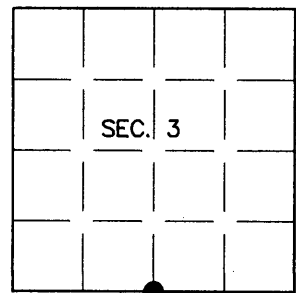
By: _____ Deputy

U.S. PUBLIC LAND SURVEY MONUMENT RECORD

Note: This form is intended and designed to fulfill all requirements of Wisconsin Administrative Code, Chapter A-E 7.08 U.S. Public Land Survey Monument Record (3)(a)(b)(c)(d)(e)(f)(g)(h)(i). An additional sheet may be added if necessary to conform with said requirements.

(a) CORNER LOCATION:
 1/4 Cor. of Secs. 3 & 10
 Township 39 North
 Range 4 East of the 4th P.M.
 Town of Minocqua

Plane Coordinates
 X:
 Y:
 Datum:
 County of Oneida



(b) HISTORY OF ORIGINAL CORNER ESTABLISHMENT

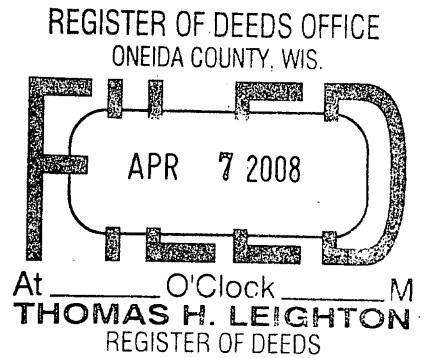
Original Surveyor: Alexander Anderson
 Date of Survey: Commenced May, 1865
 Completed May, 1865

Original Accessories:
 Hemlock 10" S2E, 10 lks.
 Hemlock 10" N15W, 15 lks.

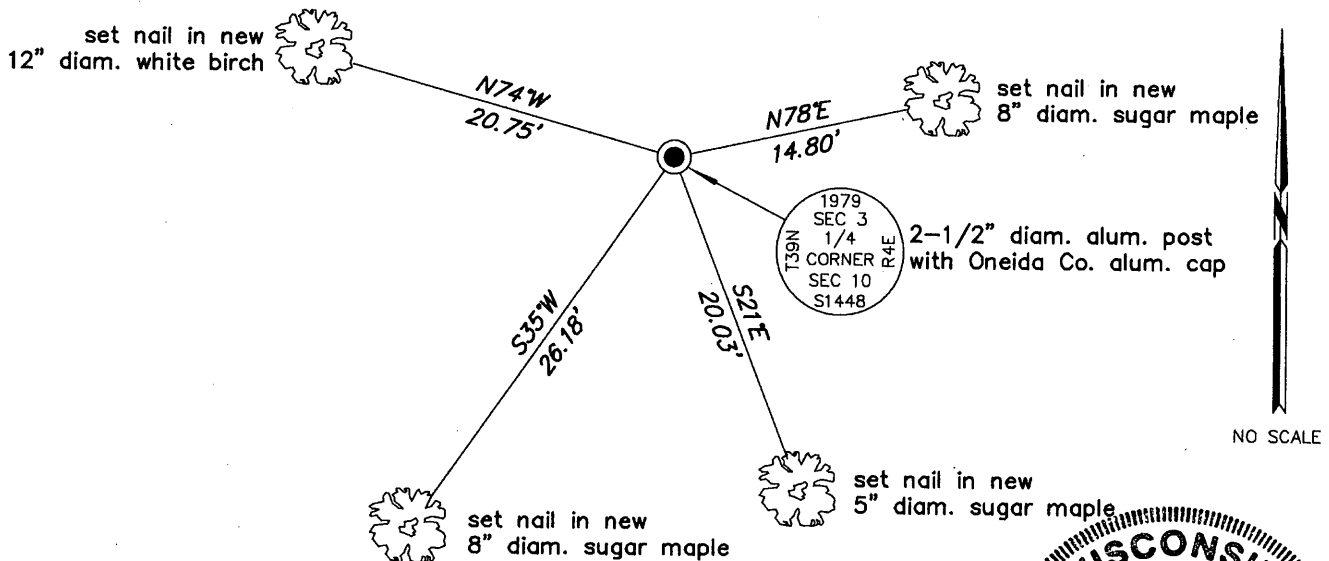
(b)(f)(g)(h) Description of monument found at this corner and if it was accepted, state all evidence (material, testimonial, occupational, plats, records, other monuments) used as a basis for accepting. If not accepted or if nothing was found, state evidence used as basis for establishing location. If re-established through lost corner proportionate methods, indicate all monuments, distances and directions used to establish. Indicate type of monument and sign post found or set.

9 April 1979: OCS #C-1107 by James M. Marquardt, RLS. Found Oneida Co. monument and bearing trees: maple 8" N17W, 26.90'; white birch 7" N58E, 7.15' and white birch 7" S17E, 20.75'.

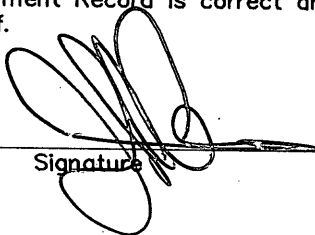
18 October 2007: I found and accepted an aluminum post, 2-1/2" diam. with Oneida Co. aluminum cap projecting 8" above the ground. I found Marquardt's trees either dead or gone. I established accessories as shown below and set a white plastic sign post bearing North, 1 ft. dist.



(c)(d)(e) Plan view of corner with ties to at least 4 witness monuments. If in disagreement with previously established corner, show the distances between the two corners and also indicate the ties to the disputed.



(i) I, Jeffrey W. Austin, Registered Land Surveyor No. S-1885, hereby certify upon honor that the corner location on this record was determined by me or under my direction and control and that this U.S. Public Land Survey Monument Record is correct and complete to the best of my knowledge and belief.


 Signature

MAR. 7, 2008
 Date

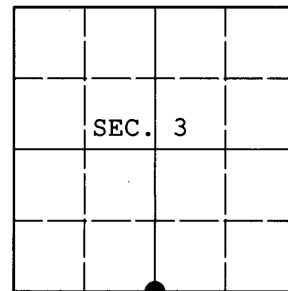


INDEX NO. E-15 (3904030020)

U.S. PUBLIC LAND SURVEY MONUMENT RECORD

Note: This form is intended and designed to fulfill all requirements of Wisconsin Administrative Code, Chapter A-E 7.08 U.S. Public Land Survey Monument Record (3) (a) (b) (c) (d) (e) (f) (g) (h) (i). An additional sheet may be added if necessary to conform with said requirements.

(a) CORNER LOCATION: WISCRS (Oneida County)
1/4 Cor. of Secs. 3 & 10 N: 256,875.687 USft
Township 39 North E: 121,064.630 USft
Range 4 East of the 4th P.M. Datum: NAD 1983(2007)
Town of Minocqua County of Oneida



(b) HISTORY OF ORIGINAL CORNER ESTABLISHMENT

Original Surveyor: Alexander Anderson Original Accessories:
Date of Survey: Commenced: May 9, 1865 hemlock 10" S2°E, 10 lks.
Completed: May 22, 1865 hemlock 10" N15°W, 15 lks.

(b) (f) (g) (h) Description of monument found at this corner and if it was accepted, state all evidence (material, testimonial, occupational, plats, records, other monuments) used as a basis for accepting. If not accepted or if nothing was found, state evidence used as basis for establishing location. If re-established through lost corner proportionate methods, indicate all monuments, distances and directions used to establish. Indicate type of monument and sign post found or set.

NOTE: This is a perpetuation of a previous USPLS Monument Record by Jeffrey W. Austin, RLS dated March 7, 2008 and filed in the office of the Oneida County Register of Deeds. A complete history of the corner can be found on the previous monument record. I accept the previous location as a true and faithful perpetuation or reestablishment of the original corner location and further perpetuate it as follows.

February 18, 2013: I found and accepted my monument, a 2-1/2" diam. Oneida Co. aluminum monument. My accessories were found in substantial agreement with my previous record and were not remeasured as the sole purpose of this work is to report the coordinates of the corner point.

The coordinates shown were derived from a static GPS observation referenced to a VRS control point generated by the WISCORS network.

(c) (d) (e) Plan view of corner with ties to at least 4 witness monuments. If in disagreement with previously established corner, show the distances between the two corners and also indicate the ties to the disputed.

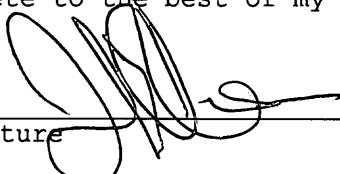
REGISTER OF DEEDS OFFICE
ONEIDA COUNTY
FILED

APR 11 2013

AT _____ O'CLOCK _____ M
KYLE J. FRANSON
REGISTER OF DEEDS

(i) I, Jeffrey W. Austin, Registered Land Surveyor No. S-1885, hereby certify that the corner location on this record was determined by me or under my direction and control and that this U.S. Public Land Survey Monument Record is correct and complete to the best of my knowledge and belief.




Signature

MAR 26, 2013
Date