

At _____ O'Clock _____ M
THOMAS H. LEIGHTON
REGISTER OF DEEDS

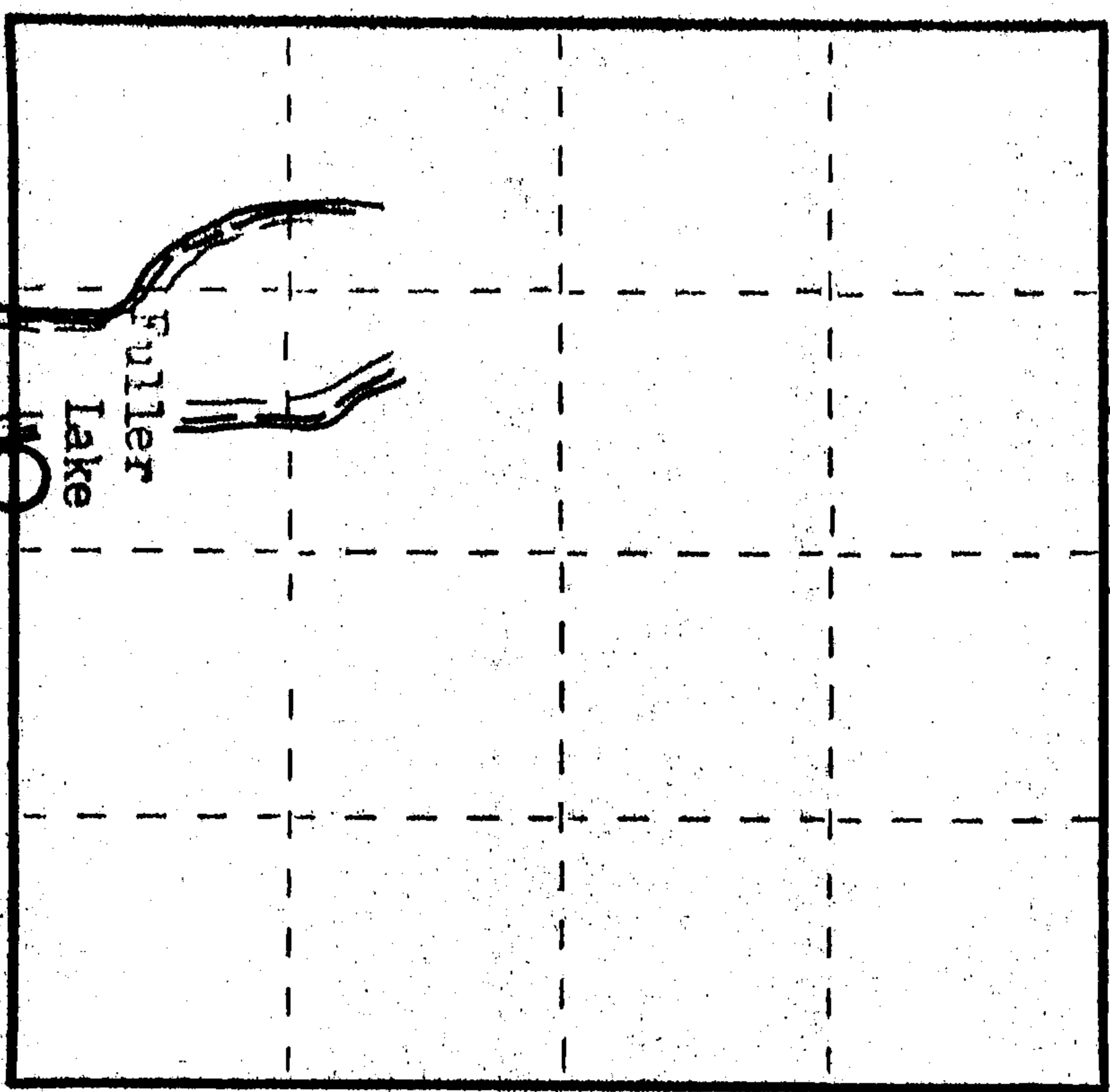
State of Wisconsin } ss.
County of Oneida

I, Martha N. Kraemer, do hereby certify that on the 10th day of July, 1978, I found evidence of the East Meander corner of Fuller Lake, Section 3 Township 39 North, Range 4 East, Fourth Principal Meridian, as described hereon; and that from this evidence I established a new monument and accessories as described hereon to perpetuate the original location of this corner.

Resident witnesses:

None

Section 3, T39N, R1E



O = Corner monument restored.

CERTIFIED LAND CORNER RESTORATION

History of original corner establishment:

Index No. E 14-15
3904030022

Corner was established by Alex Anderson, Deputy Surveyor, in May of 1865 and was marked by a wood post, witnessed by an 8" White Pine bearing S79°E, 14 links and by an 8" White Pine bearing N70°E, 14 links.

COPY FROM
WILDERNESS
SURVEYING

Description of corner evidence found:

No evidence was found. However, a blazed White Pine lies approximately 2 feet south of true line.

Description of monument and accessories I established to perpetuate the original location of this corner.

Set a 2" diameter x 30" long Bernsten monument with a stamped 3-1/2" diameter cast aluminum Oneida County Cap up 12 inches. Due to swamp and flooding caused by beaver, I set the monument 200 feet east of lake. Corner was set on line between existing Meander corner on west side of Fuller lake and newly restored meander corner on west shore of Clear Lake.

Made bearing trees:

P.K. nail in face of scribed 8" Maple bears N70°E, 12.90 feet Set new
P.K. nail in face of scribed 6" Balsam bears S36°E, 6.32 feet scribed cedar post.
P.K. nail in face of scribed 5" White Birch bears S68°E, 10.22 feet
Dated at Minocqua, Wis., this 9th day of March, 1979.

Signature Thomas H. Leighton Title Registered Land Surveyor Registration No. S-1448
(County Surveyor, Registered Land Surveyor, or other duly authorized official)

Office of Register of Deeds, County of _____, I hereby certify that the within instrument was filed in this office for record on the _____ day of _____, 19____ at _____ o'clock _____ M.

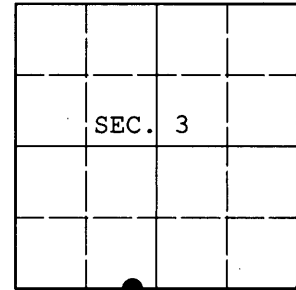
(Register of Deeds)

By _____ Deputy

U.S. PUBLIC LAND SURVEY MONUMENT RECORD

Note: This form is intended and designed to fulfill all requirements of Wisconsin Administrative Code, Chapter A-E 7.08 U.S. Public Land Survey Monument Record (3) (a) (b) (c) (d) (e) (f) (g) (h) (i). An additional sheet may be added if necessary to conform with said requirements.

(a) CORNER LOCATION: WISCRS (Oneida County)
 Meander Cor. of Secs. 3 & 10 N: 256,877.427 USft
 Township 39 North E: 120,765.720 USft
 Range 4 East of the 4th P.M. Datum: NAD 1983(2007)
 Town of Minocqua County of Oneida



(b) HISTORY OF ORIGINAL CORNER ESTABLISHMENT

Original Surveyor: Alexander Anderson Original Accessories:
 Date of Survey: Commenced: May 9, 1865 w. pine 8" S79°E, 14 lks.
 Completed: May 22, 1865 w. pine 8" N70°E, 14 lks.

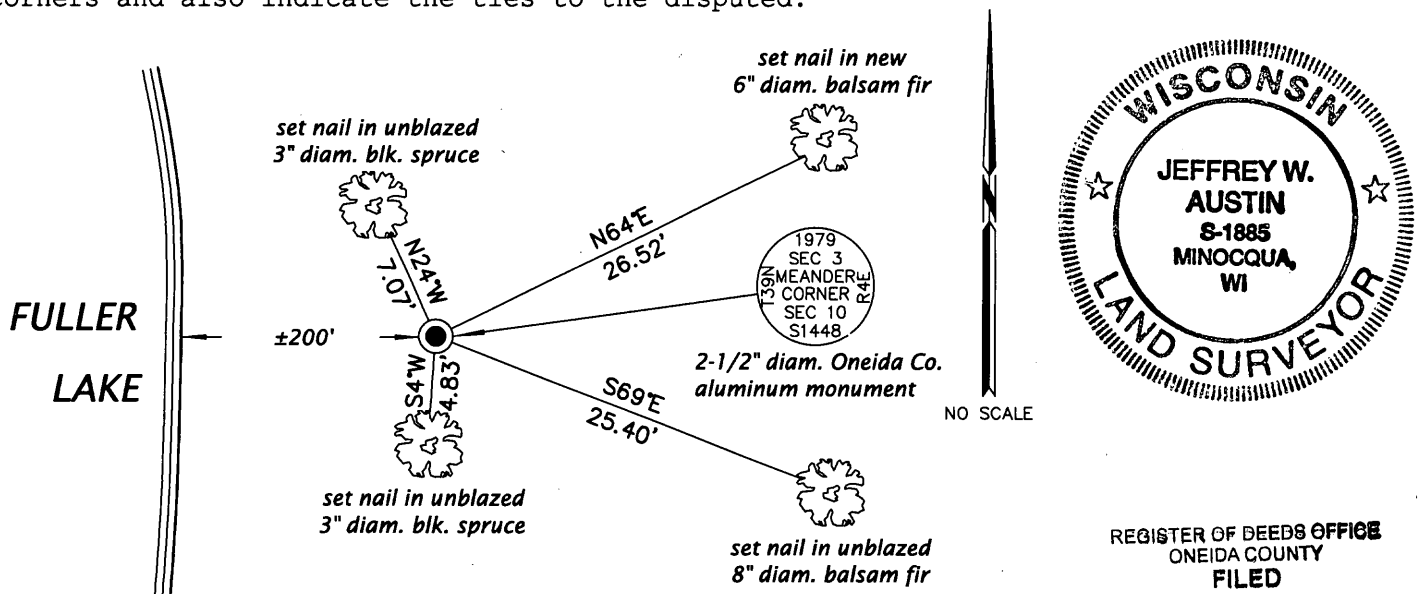
(b) (f) (g) (h) Description of monument found at this corner and if it was accepted, state all evidence (material, testimonial, occupational, plats, records, other monuments) used as a basis for accepting. If not accepted or if nothing was found, state evidence used as basis for establishing location. If re-established through lost corner proportionate methods, indicate all monuments, distances and directions used to establish. Indicate type of monument and sign post found or set.

NOTE: This is a perpetuation of a previous USPLS Monument Record by Jerome N. Kraemer, RLS dated March 9, 1979 and filed in the office of the Oneida County Register of Deeds. A complete history of the corner can be found on the previous monument record. I accept the previous location as a true and faithful perpetuation or reestablishment of the original corner location and further perpetuate it as follows.

February 18, 2013: I found and accepted Kraemer's monument, a 2-1/2" diam. aluminum pipe with 3-1/4" diam. Oneida Co. aluminum cap projecting 12" above the ground surface. I found the stump of Kraemer's fir with PK nail at record bearing and distance. His other trees are gone. I established accessories as shown below and found DNR steel sign posts bearing East, 2.5 ft. and North 4.0 ft.

The coordinates shown were derived from a direct static GPS observation referenced to a VRS control point generated by the WISCORS network.

(c) (d) (e) Plan view of corner with ties to at least 4 witness monuments. If in disagreement with previously established corner, show the distances between the two corners and also indicate the ties to the disputed.



REGISTER OF DEEDS OFFICE
 ONEIDA COUNTY
 FILED

APR 11 2013

(i) I, Jeffrey W. Austin, Registered Land Surveyor No. S-1885, hereby certify that the corner location on this record was determined by me or under my direction and control and that this U.S. Public Land Survey Monument Record is correct and complete to the best of my knowledge and belief.

AT _____ O'CLOCK _____ M
 KYLE J. FRANSON
 REGISTER OF DEEDS

Signature

MAR 26, 2013
 Date