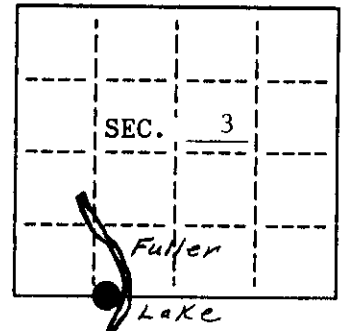


**U.S. PUBLIC LAND SURVEY MONUMENT RECORD**

Note: This form is intended and designed to fulfill all requirements of Wisconsin Administrative Code, Chapter A-E 7.08 U.S. Public Land Survey Monument Record (3)(a)(b)(c)(d)(e)(f)(g)(h)(i). An additional sheet may be added if necessary to conform with said requirements.

(a) CORNER LOCATION: State Plane Coordinates  
 Meander corner of Sec. 3 X ---  
 Township 39 North Y ---  
 Range 4 East Datum Base ---  
 Town/City Minocqua County of Oneida



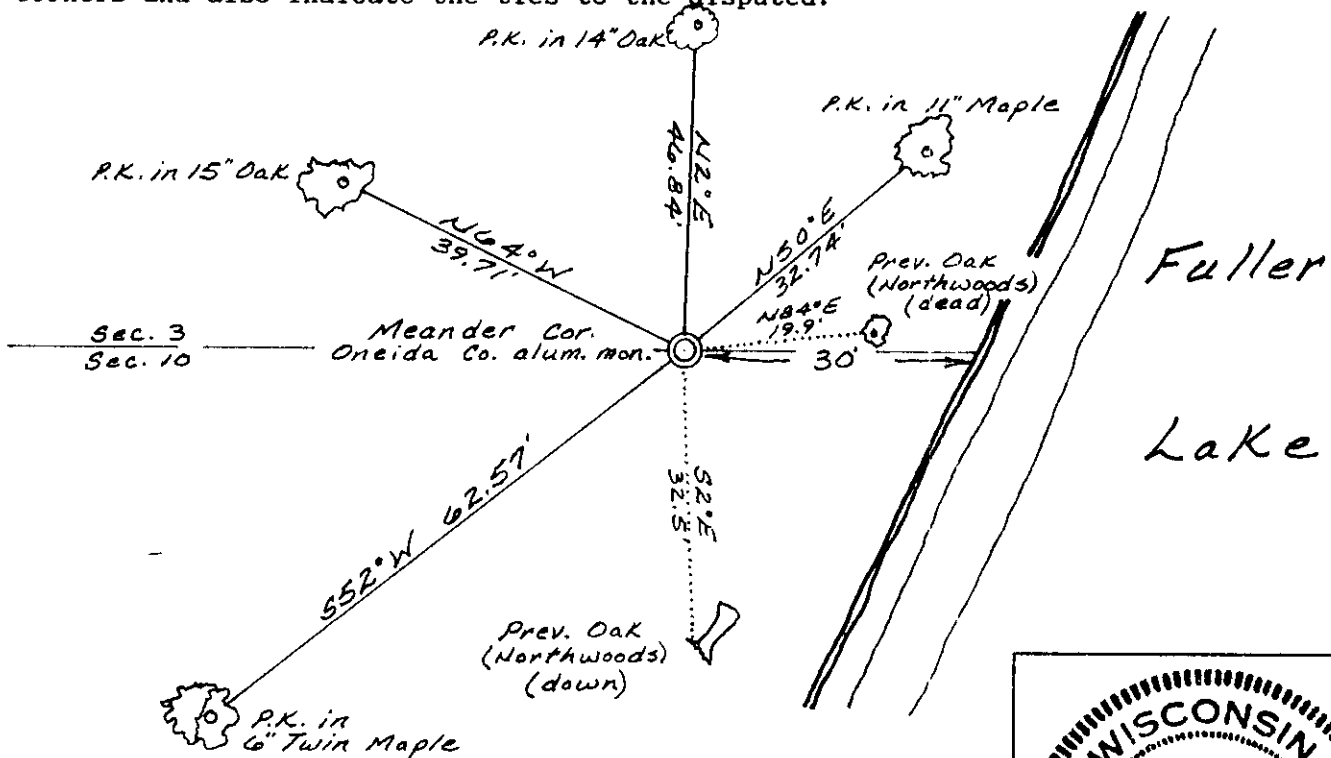
(b) HISTORY OF ORIGINAL CORNER ESTABLISHMENT  
 Original Surveyor: Alex Anderson  
 Date of Survey: ~~Commenced~~ Completed May, 1865

Original B.T.'s  
 7" Tamarack, N11°E, 24 lks  
 8" Aspen, S58°W, 46 lks

(b)(f)(g)(h) Description of monument found at this corner and if it was accepted, state all evidence (material, testimonial, occupational, plats, records, other monuments) used as a basis for accepting. If not accepted or if nothing was found, state evidence used as basis for establishing location. If reestablished through lost corner proportionate methods, indicate all monuments, distances and directions used to establish. Indicate type of monument and sign post found or set.

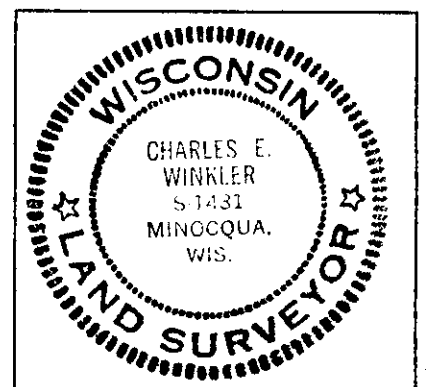
- Feb., 1972: Northwoods Surveyors, Inc. set a 2" iron pipe near the west shore of Fuller Lake on a straight line between the SW Section Corner and a proportioned location of the SE Section Corner which falls in Clear Lake. Northwoods used the following bearing trees: 8" Oak, S2°E, 32.5'; 8" Oak, N84°E, 19.9'.
- May, 1994: I found and accepted Northwoods' 2" iron pipe. I replaced said iron pipe with an Oneida County Aluminum Monument (5' long) and plastic sign post.

(c)(d)(e) Plan view of corner with ties to at least 4 witness monuments. If in disagreement with previously established corner, show the distances between the two corners and also indicate the ties to the disputed.



(i) I, Charles E. Winkler S-1431  
 hereby certify that the corner location on this record was determined by me or under my direction and control and that this U.S. Public Land Survey Monument Record is correct and complete to the best of my knowledge and belief.

Charles E. Winkler 5-12-1994  
 Signature Inman-Foltz & Associates, Inc. Date



INDEX NO. E-14,15