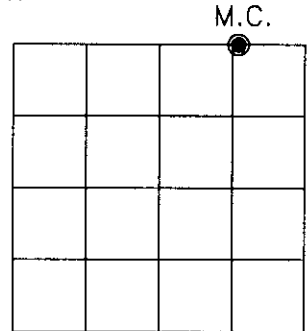


U.S. PUBLIC LAND SURVEY MONUMENT RECORD

Note: This form is intended and designed to fulfill all requirements of Wisconsin Administrative Code, Chapter A-E 7.08 U.S. Public Land Survey Monument Record (3)(a)(b)(c)(d)(e)(f)(g)(h)(i). An additional sheet may be added if necessary to conform with said requirements.

(a) CORNER LOCATION: * on north line

E. Meander corner* of Sec. 9 State Plane Coordinates
 Township 39 North X _____
 Range 4 East Y _____
 Town/~~City/Village~~ Minocqua Datum Base _____
 County of Oneida



(b) HISTORY OF ORIGINAL CORNER ESTABLISHMENT

Original Surveyor: Alex Anderson Original B.T.'S SECTION 9
 Date of Survey: Commenced May 9th, 1865 W. Pine 12" N80°E, 83 links
 Completed May 22nd, 1865 Y. Pine 14" S10°W, 24 links

(f)(g)(h) Description of monument found at this corner and if it was accepted, state all evidence (material, testimonial, occupational, plats, records, other monuments) used as a basis for establishing location. If not accepted or if nothing was found, state evidence used as basis for establishing location. If reestablished through lost corner proportionate methods, indicate all monuments, distances and directions used to establish. Indicate type of monument and sign post found or set.

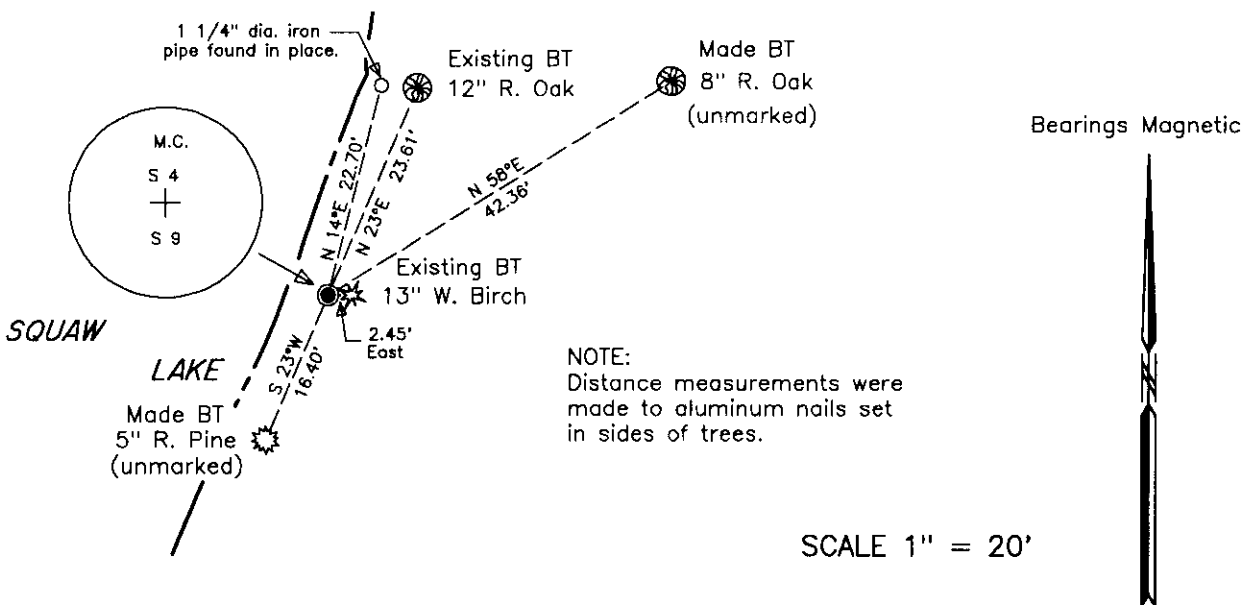
Nov. 19, 1930 - Harry C. Hall, Oneida County Surveyor, recovered evidence for location of original meander corner. C. D. Vaughan's iron cannot be found, but SW stub is (as he says) a Hemlock with original scribe marks visible, now tipped over - original location apparent. Drive temp peg for M.C. at record course and distance. Set: Tack in N. side of 3" Birch N88°E, .432 chains; Tack in W. side of 9" Birch S10°W, .254 chains.

July 1966 - James G. Griffin, RLS No. 755 - Identifies meander corner, on map of survey in Governmen Lots 1 and 2, marked by iron pipe, referenced by: 13" W. Birch East, 2.5 feet and by an 8" Oak N24°E, 23.0 feet.

July 2, 1980 - Jerome N. Kraemer, RLS No. 1448 - Oneida County Certified Survey Map No. 803 re-monuments corner with a 3/4 inch dia. x 30" long iron pipe at record course and distance using Griffin's bearing trees.

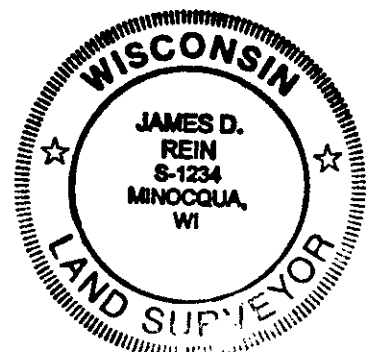
July 29, 1993 - James D. Rein, RLS No. 1234 - Set a 2 inch dia. aluminum cap in Kraemer's 3/4 inch dia. iron pipe flush with ground level. Made new ties to the two existing bearing trees and made two new unmarked bearing trees with aluminum nails set in root crown on side of tree as shown in plan view. Corner is located in an improved area, 4 feet easterly from the shore, and 2 feet northerly of an asphalt walk, thus we set no post.

(c)(d)(e) Plan view of corner with ties to at least 4 witness monuments. If in disagreement with previously established corner, show the distance between the two corners and also indicate the ties to the disputed corner.



(i) I, James D. Rein, Registered Land Surveyor No. 1234, hereby certify that the corner location on this record was determined by me or under my direction and control and that this U.S. Public Land Survey Monument Record is correct and complete to the best of my knowledge and belief.

[Signature] July 29th, 1993
 Signature Date



INDEX NO. E 12-13

3904040009