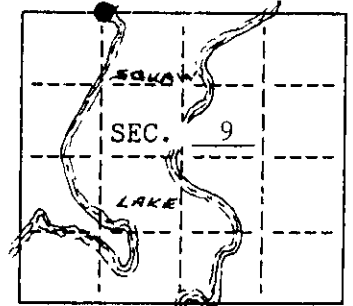


**U.S. PUBLIC LAND SURVEY MONUMENT RECORD**

Note: This form is intended and designed to fulfill all requirements of Wisconsin Administrative Code, Chapter A-8 7.08 U.S. Public Land Survey Monument Record (3)(a)(b)(c)(d)(e)(f)(g)(h)(i). An additional sheet may be added if necessary to conform with said requirements.

(a) CORNER LOCATION: State Plane Coordinates  
 Meander corner of Sec. 9 X -----  
 Township 39 North Y -----  
 Range 4 East Datum Base -----  
 Town/~~City~~ Minocqua County of Oneida



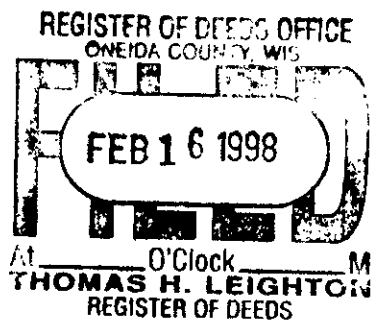
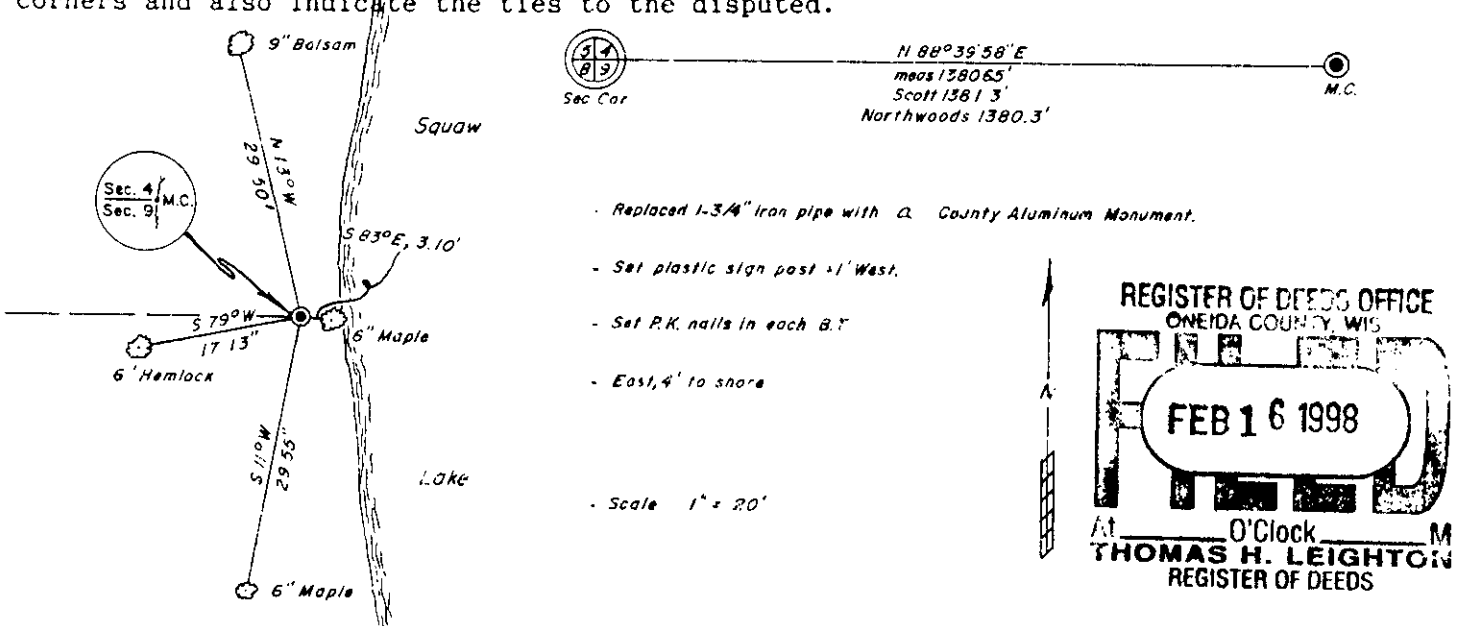
(b) HISTORY OF ORIGINAL CORNER ESTABLISHMENT  
 Original Surveyor: Alex Anderson  
 Date of Survey: Commenced May, 1865  
 Completed May, 1865

Original B.T.'s  
 Birch 10" S40°W, 16 lks  
 Hemlock 14" N32°W, 22 lks  
 CCR 10  
 43904040029

(b)(f)(g)(h) Description of monument found at this corner and if it was accepted, state all evidence (material, testimonial, occupational, plats, records, other monuments) used as a basis for accepting. If not accepted or if nothing was found, state evidence used as basis for establishing location. If reestablished through lost corner proportionate methods, indicate all monuments, distances and directions used to establish. Indicate type of monument and sign post found or set.

- 1865 - Deputy Surveyor, Alex Anderson set meander post.
- 1962 - Lloyd Scott's survey map shows an iron pipe and wood post for the meander corner.
- 1971 - Northwoods Surveyors found and accepted the iron pipe shown on Scott's survey, as the correct meander corner.
- 1997 - I found and accepted a 1-3/4" iron pipe w/wood post as Scott's meander corner. See sketch below for distance checks to NW section corner.

(c)(d)(e) Plan view of corner with ties to at least 4 witness monuments. If in disagreement with previously established corner, show the distances between the two corners and also indicate the ties to the disputed.



(i) I, Charles E. Winkler, #S-1431 hereby certify that the corner location on this record was determined by me or under my direction and control and that this U.S. Public Land Survey Monument Record is correct and complete to the best of my knowledge and belief.

Charles E. Winkler / 1/21/98  
 Signature Foltz and Associates, Inc. Date

INDEX NO. E 10-11

3904040029