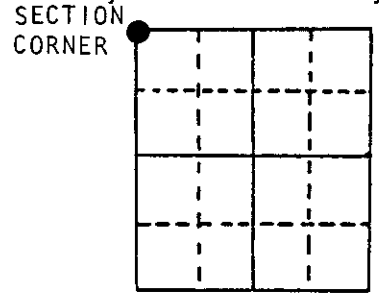


# U.S. PUBLIC LAND SURVEY MONUMENT RECORD

Note: This form is intended and designed to fulfill all requirements of Wisconsin Administrative Code, Chapter A-E 5.02, U.S. Public Land Survey Monument Record (3) (a) (b) (c) (d) (e) (f) (g) (h) (i). An additional sheet may be added if necessary to conform with said requirements.

(a) Corner location: Township 39 North  
 Range 4 East/West



Section 9

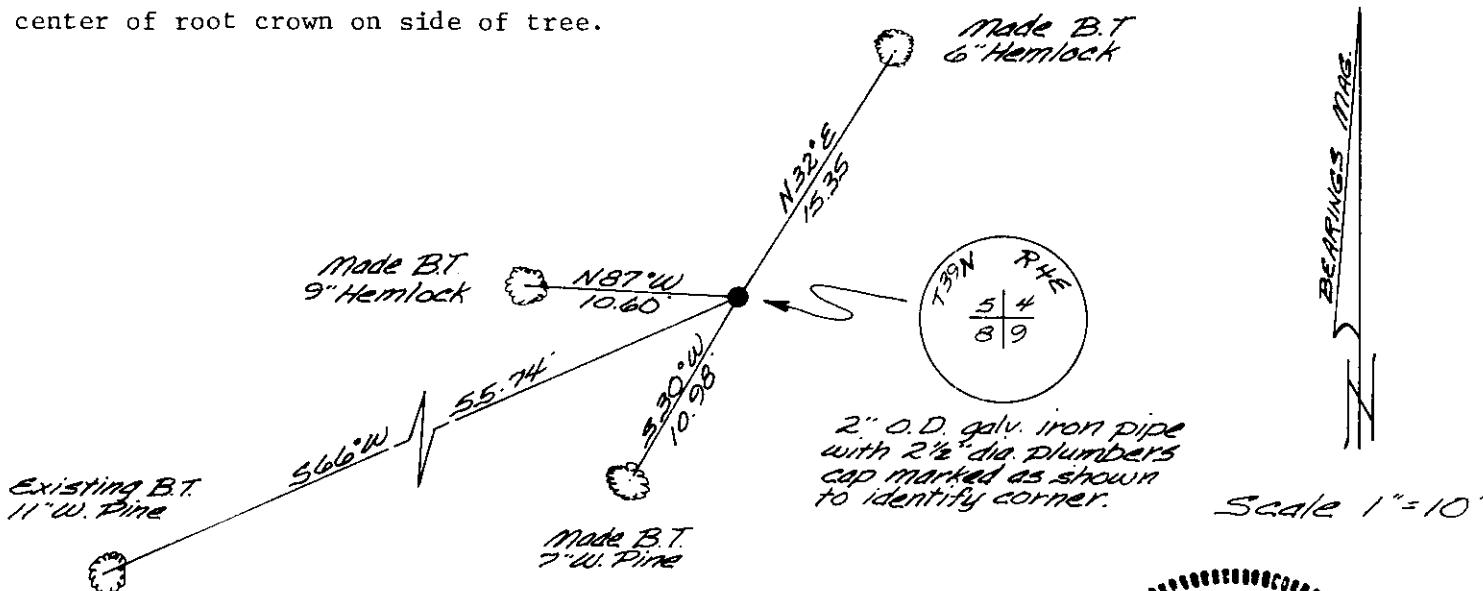
Town/City/Village MINOCQUA  
 County ONEIDA

(b) (f) (g) (h) Description of monument found at this corner and if it was accepted, state all evidence (material, testimonial, occupational, plats, records, other monuments) used as a basis for accepting. If not accepted or if nothing was found, state evidence used as basis for establishing location. If reestablished through lost corner proportionate methods, indicate all monuments, distances and directions used to establish.

- May 17, 1865- Alex Anderson, Deputy Surveyor: Set post for original corner to Sections 4, 5, 8 & 9. Original bearing trees: Hemlock 10" N40°W, 12 links  
 Hemlock 12" S12°W, 10 links
- Dec.22, 1930- H. C. Hall, County Surveyor: Follow C. D. Vaughan's random west to his post for corner to Sections 4, 5, 8 & 9 which he set in 1924 at ixion of old blazed lines. We fail to see lines or original stumps. We accept this corner. C.D.Vaughan's bearings: White Pine stump 20" S69½°E, .26 chains  
 White Pine stump 20" S81°W, .50 chains
- Feb.29, 1984- I found 2" outside diameter galvanized iron pipe with 2-1/2" diameter plumber's cap marked to identify corner as shown below.  
 Existing bearing trees: 20" Pine stump S69°E, 17½ feet;  
 20" Pine stump S81°W, 33 feet;  
 5" White Pine (dead) N10°W, 21.0 feet;  
 11" White Pine S66°W, 55.74 feet

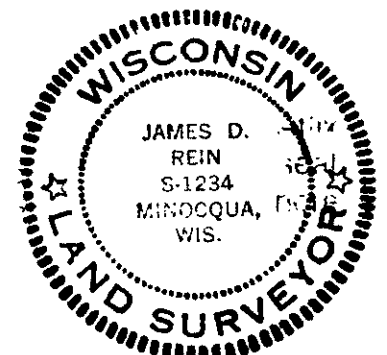
(c) (d) (e) Plan view of corner with ties to at least 4 witness monuments. If in disagreement with previously established corner, show the distances between the two corners and also indicate the ties to the disputed corner.

NOTE: Distance ties to bearing trees were made to an aluminum nail set in center of root crown on side of tree.



(i) I, JAMES D. REIN, Registered Land Surveyor No. S-1234  
 (type or print name) certify that the corner location on this record was determined by me or under my direction and control and that this U.S. Public Land Survey Monument Record is correct and complete to the best of my knowledge and belief.

James D Rein Signature  
 June 21st, 1984 Date



Index No. E-9

3904050000