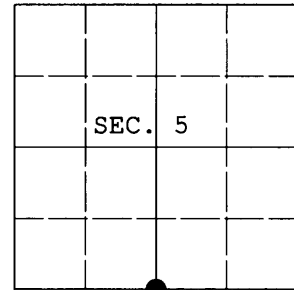


U.S. PUBLIC LAND SURVEY MONUMENT RECORD

Note: This form is intended and designed to fulfill all requirements of Wisconsin Administrative Code, Chapter A-E 7.08 U.S. Public Land Survey Monument Record (3) (a) (b) (c) (d) (e) (f) (g) (h) (i). An additional sheet may be added if necessary to conform with said requirements.

(a) CORNER LOCATION: Plane Coordinates
 1/4 Cor. of Secs. 5 & 8 N: 256,719.088 USft
 Township 39 North E: 110,733.097 USft
 Range 4 East Datum: NAD 83/91 (ONEIDA91)
 Town of Minocqua County of Oneida



(b) HISTORY OF ORIGINAL CORNER ESTABLISHMENT

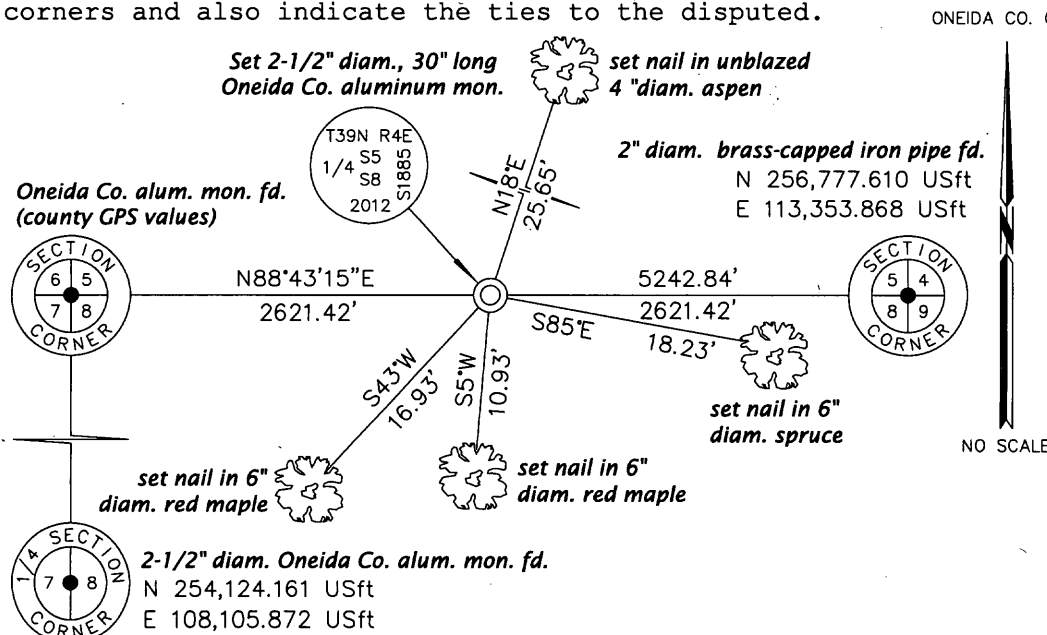
Original Surveyor: Alexander Anderson Original Accessories:
 Date of Survey: Commenced May 9, 1865 pine 24" S80°W, 11 lks.
 Completed May 22, 1865 hemlock 18" N56°E, 14 lks.

(b) (f) (g) (h) Description of monument found at this corner and if it was accepted, state all evidence (material, testimonial, occupational, plats, records, other monuments) used as a basis for accepting. If not accepted or if nothing was found, state evidence used as basis for establishing location. If re-established through lost corner proportionate methods, indicate all monuments, distances and directions used to establish. Indicate type of monument and sign post found or set.

March 29, 2012: During an extensive search, I was unable to find evidence of the original survey or any subsequent survey. There are numerous pine stumps at the corner point, but I was unable to find Anderson's marks on any of them. I found a 10" x 11" stamped metal sign buried within 10 feet of the proportionate location: "FUR FARM LICENSED BY WISCONSIN CONSERVATION DEP'T." I believe this sign was posted at the corner point many years ago. At the proportionate location, I set a 2-1/2" diam., 30" long aluminum pipe with 3-1/4" diam. Oneida Co. aluminum cap projecting 6" above the ground surface and marked as shown below. Under the monument, I deposited a blue/black DEEP-1 magnet. I established accessories as shown below and set a white plastic sign post North, 1 foot.

The coordinates shown were derived from a static GPS control survey based on the published geographic coordinates of Oneida County control station 296S.


(c) (d) (e) Plan view of corner with ties to at least 4 witness monuments. If in disagreement with previously established corner, show the distances between the two corners and also indicate the ties to the disputed.



REGISTER OF DEEDS OFFICE
 ONEIDA COUNTY
FILED
 APR 03 2012

(i) I, Jeffrey W. Austin, Registered Land Surveyor No. S-1885, hereby certify that the corner location on this record was determined by me or under my direction and control and that this U.S. Public Land Survey Monument Record is correct and complete to the best of my knowledge and belief.

AT _____ O'CLOCK _____ M
THOMAS H. LEIGHTON
 REGISTER OF DEEDS

Signature  Date MAR. 30, 2012