

# U.S. PUBLIC LAND SURVEY MONUMENT RECORD

Note: This form is intended and designed to fulfill all requirements of the Wisconsin Administrative Code, Chapter A-E 7.08 U.S. Public Land Monument Record (3)(a)(b)(c)(d)(e)(f)(g)(h)(i). An additional sheet may be added if necessary to conform with said requirements.

ONEIDA COUNTY

MAY 25 2017

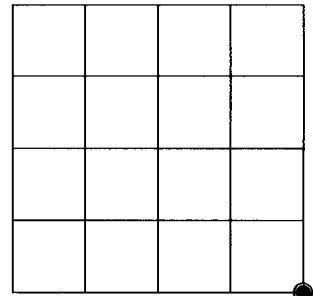
(a) CORNER LOCATION:  
 Southeast Corner of Section 6  
 Township 39 North  
 Range 4 East  
 Town of Minocqua  
 County of Oneida

WISCRS - Oneida County  
 North: 256660.496 USft  
 East: 108112.435 USft  
 Latitude:  
 Longitude:  
 Datum: NAD 83(2011)  
 GNSS Method: RTK - Direct  
 GNSS Control: WISCRS VRS  
 Record North: 256660.566 USft  
 Record East: 108112.327 USft  
 Record Datum: NAD 83(1991)

AT \_\_\_\_\_ O'CLOCK \_\_\_\_\_ M  
 KYLE J. FRANSON  
 REGISTER OF DEEDS

(RECORDING AREA)

SECTION 6



(b) HISTORY OF ORIGINAL CORNER ESTABLISHMENT

Original Surveyor: Alex Anderson  
 Date of Survey: Commenced May 9th, 1865  
 Completed May 22nd, 1865  
 Original B.T.'S: Birch 4" S 46°E, 200 lks.  
 Birch 4" S 10°W 156 lks.

(f)(g)(h) DESCRIPTION OF MONUMENT FOUND AT THIS CORNER AND IF IT WAS ACCEPTED, STATE ALL EVIDENCE (MATERIAL, TESTIMONIAL, OCCUPATIONAL, PLATS, RECORD, OTHER MONUMENTS) USED AS A BASIS FOR ESTABLISHING LOCATION. IF NOT ACCEPTED OR IF NOTHING WAS FOUND, STATE EVIDENCE USED AS BASIS FOR ESTABLISHING LOCATION. IF REESTABLISHED THROUGH LOST CORNER PROPORTIONATE METHODS, INDICATE ALL MONUMENTS, DISTANCES AND DIRECTIONS USED TO ESTABLISH. INDICATE TYPE OF MONUMENT AND SIGN POST FOUND OR SET.

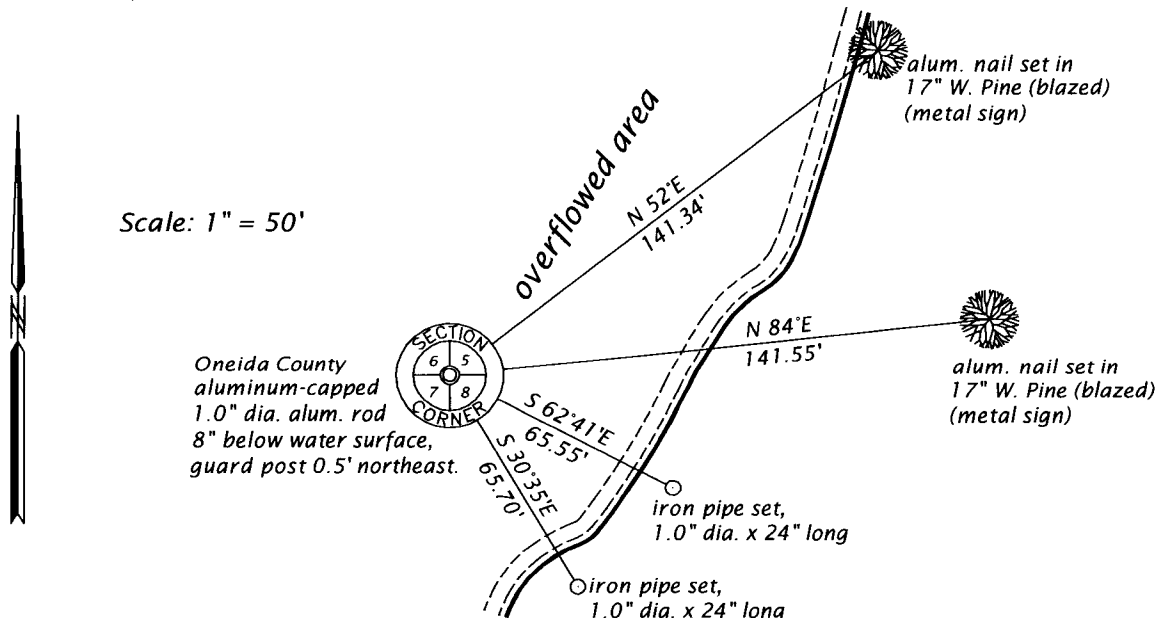
March 1963 ?- NEPCO surveyors, Willaim S. Cameron and Wm. H. Stuth - maps filed in NEPCO Book 2, pages 198 through 201, legend this corner "Found".

May 14, 1993 - Michael E. Weber, RLS No. 2070, Eagle Landmark Surveying, Inc., Dwg. No. E9554-1, filed as B2775 in county surveyor's office legends this corner "ONEIDA COUNTY ALUMINUM MONUMENT SET".

May 3, 2017 - James D. Rein, PLS No. 1234, we recover an Oneida County capped aluminum rod, in 3 feet high water beaver flowage, top of monument is 8" below present water surface. I accept this monument as the best available evidence of the original corner position and we make reference ties shown in plan.

The coordinate value shown has been verified by at least one of the following methods: 1) comparison to a previously GPS determined published value; 2) the value is the average of two or more GPS observations at a markedly different time; 3) one or more distances were measured back to the GPS observed corner from temporary GPS observed offset locations.

(c)(d)(e) PLAN VIEW OF CORNER WITH TIES TO AT LEAST 4 WITNESS MONUMENTS. IF IN DISAGREEMENT WITH PREVIOUSLY ESTABLISHED CORNER, SHOW THE DISTANCE BETWEEN THE TWO CORNERS AND ALSO INDICATE THE TIES TO THE DISPUTED CORNER.



(i) I, JAMES D. REIN, PROFESSIONAL LAND SURVEYOR NO. S-1234 HEREBY CERTIFY THAT THE CORNER LOCATION ON THIS RECORD WAS DETERMINED BY ME OR UNDER MY DIRECTION AND CONTROL AND THAT THIS U.S. PUBLIC LAND SURVEY MONUMENT RECORD IS CORRECT AND COMPLETE TO THE BEST OF MY KNOWLEDGE AND BELIEF.



*James D. Rein*  
 SIGNATURE

5-15-17  
 DATE

INDEX NO. E-5  
 3904060000