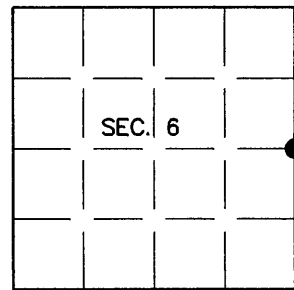


# U.S. PUBLIC LAND SURVEY MONUMENT RECORD

Note: This form is intended and designed to fulfill all requirements of Wisconsin Administrative Code, Chapter A-E 7.08 U.S. Public Land Survey Monument Record (3)(a)(b)(c)(d)(e)(f)(g)(h)(i). An additional sheet may be added if necessary to conform with said requirements.

(a) CORNER LOCATION:  
 1/4 Cor. of Secs. 5 & 6  
 Township 39 North  
 Range 4 East of the 4th P.M.  
 Town of Minocqua

Plane Coordinates  
 X:  
 Y:  
 Datum:  
 County of Oneida



(b) HISTORY OF ORIGINAL CORNER ESTABLISHMENT

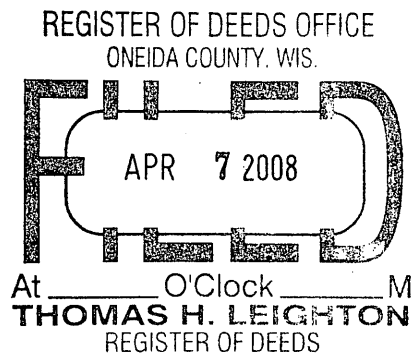
Original Surveyor: Alexander Anderson  
 Date of Survey: Commenced May, 1865  
 Completed May, 1865

Original Accessories:  
 Tamarack 6" N59°W, 35 lks.  
 Tamarack 6" S45°E, 25 lks.

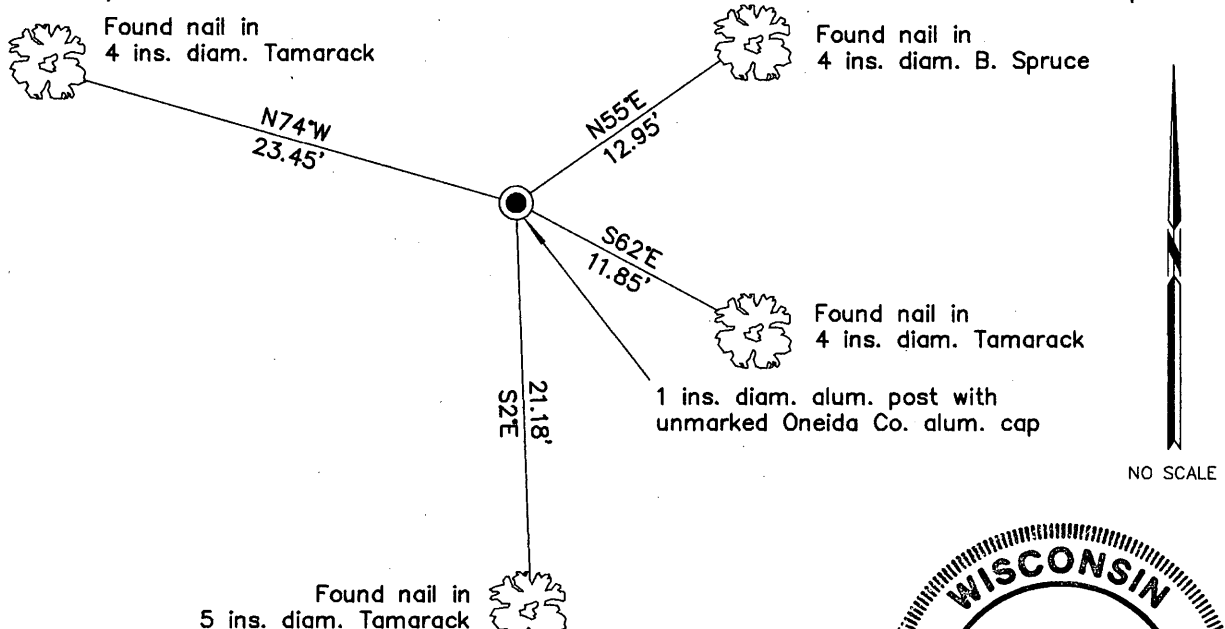
(b)(f)(g)(h) Description of monument found at this corner and if it was accepted, state all evidence (material, testimonial, occupational, plats, records, other monuments) used as a basis for accepting. If not accepted or if nothing was found, state evidence used as basis for establishing location. If re-established through lost corner proportionate methods, indicate all monuments, distances and directions used to establish. Indicate type of monument and sign post found or set.

NOTE: This appears to be the "ONEIDA CO. MONUMENT SET" as shown on OCS #B-2775.

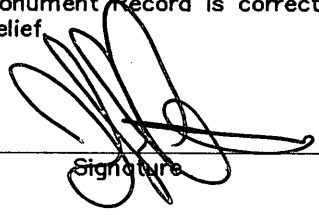
1 August 2005: I found and accepted a 1 ins. diam. aluminum post with Oneida Co. aluminum cap projecting 3 ins. above the bog. I found accessories as shown below and found a white plastic sign post bearing North, 1 ft. dist.



(c)(d)(e) Plan view of corner with ties to at least 4 witness monuments. If in disagreement with previously established corner, show the distances between the two corners and also indicate the ties to the disputed.



(i) I, Jeffrey W. Austin, Registered Land Surveyor No. S-1885, hereby certify upon honor that the corner location on this record was determined by me or under my direction and control and that this U.S. Public Land Survey Monument Record is correct and complete to the best of my knowledge and belief

  
 Signature

MAR. 3, 2008  
 Date



INDEX NO. C-5 (3904062000)