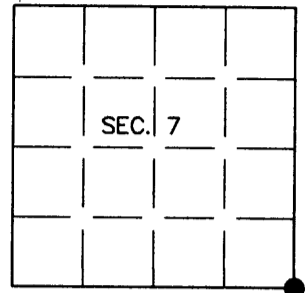


U.S. PUBLIC LAND SURVEY MONUMENT RECORD

Note: This form is intended and designed to fulfill all requirements of Wisconsin Administrative Code, Chapter A-E 7.08 U.S. Public Land Survey Monument Record (3)(a)(b)(c)(d)(e)(f)(g)(h)(i). An additional sheet may be added if necessary to conform with said requirements.

(a) CORNER LOCATION:
 Cor. of Secs. 7, 8, 17 & 18
 Township 39 North
 Range 4 East of the 4th P.M.
 Town of Minocqua

Plane Coordinates
 X:
 Y:
 Datum:
 County of Oneida



(b) HISTORY OF ORIGINAL CORNER ESTABLISHMENT

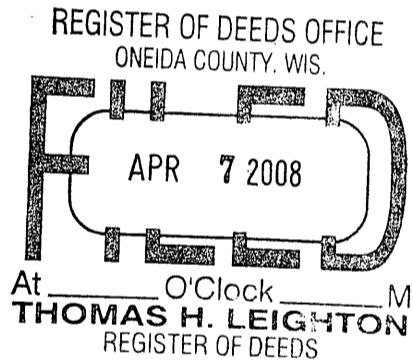
Original Surveyor: Alexander Anderson
 Date of Survey: Commenced May, 1865
 Completed May, 1865

Original Accessories:
 Tamarack 8" N73°W, 55 lks.
 Spruce 4" N65°E, 30 lks.

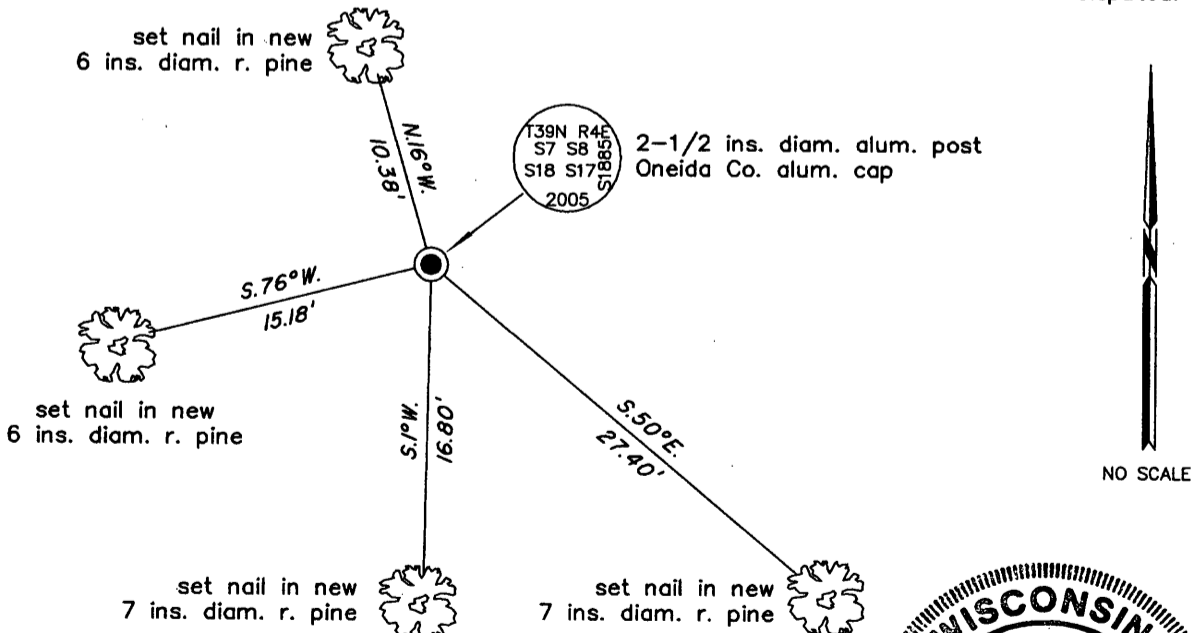
(b)(f)(g)(h) Description of monument found at this corner and if it was accepted, state all evidence (material, testimonial, occupational, plats, records, other monuments) used as a basis for accepting. If not accepted or if nothing was found, state evidence used as basis for establishing location. If re-established through lost corner proportionate methods, indicate all monuments, distances and directions used to establish. Indicate type of monument and sign post found or set.

This corner was recovered by Wilderness Surveying during the survey reflected on OCS #C-2084. They recovered a 4 ins. sq. cedar post established previously by Nekoosa Paper Co.

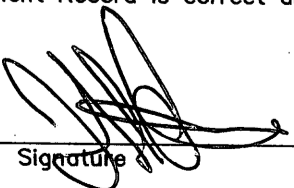
29 July 2005: In place of their temporary point, I set a 30 ins. long, 2-1/2 ins. diam. aluminum post with Oneida Co. aluminum cap projecting 6 ins. above the ground. I established accessories as shown below and set a white plastic sign post bearing Northwest, 1 ft. dist.



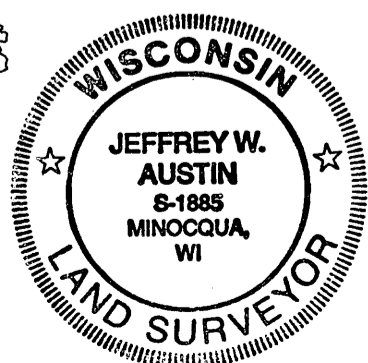
(c)(d)(e) Plan view of corner with ties to at least 4 witness monuments. If in disagreement with previously established corner, show the distances between the two corners and also indicate the ties to the disputed.



(i) I, Jeffrey W. Austin, Registered Land Surveyor No. S-1885, hereby certify upon honor that the corner location on this record was determined by me or under my direction and control and that this U.S. Public Land Survey Monument Record is correct and complete to the best of my knowledge and belief.


 Signature

MAR. 4, 2008
 Date



INDEX NO. J-5 (3904070000)