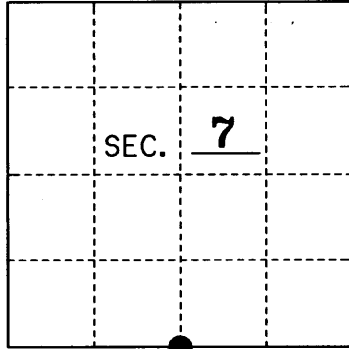


# U.S. PUBLIC LAND SURVEY MONUMENT RECORD

Note: This form is intended and designed to fulfill all requirements of Wisconsin Administrative Code, Chapter A-E 7.08 U.S. Public Land Monument Record (3)(a)(b)(c)(d)(e)(f)(g)(h)(i). An additional sheet may be added if necessary to conform with said requirements. Deeds Square

(a) CORNER LOCATION: \_\_\_\_\_  
 South 1/4 Corner of Section 7  
 Township 39 North, Range 4 East  
 Township/City Minocqua  
 County of ONEIDA



REGISTER OF DEEDS OFFICE  
ONEIDA COUNTY, WIS.

FILED

JAN 10 2011

At \_\_\_\_\_ O'Clock \_\_\_\_\_ M  
**THOMAS H. LEIGHTON**  
 REGISTER OF DEEDS

(b) HISTORY OF ORIGINAL ESTABLISHMENT  
 Original Surveyor: Alex Anderson  
 Date of Survey: May 1865  
 Original B.T.'s:

14" Cedar S 30°W 7 Lks.  
 8" Cedar N 72°E 21 Lks.

County or State Plane Coordinates  
 Northing \_\_\_\_\_  
 Easting \_\_\_\_\_  
 Datum Base \_\_\_\_\_

(b)(f)(g)(h) Description of monument found at this corner and if it was accepted, state all evidence (material, testimonial, occupational, plats, records, other monuments) used as a basis for accepting. If not accepted or if nothing was found, state evidence used as basis for establishing location. If reestablished through lost corner proportionate methods, indicate all monuments, distances and directions used to establish. Indicate type of monument and sign post found or set.

2/18/1989: W.H. Stuth of Nekoosa Paper Co. does a transit & chain survey and found the four Section corners and West 1/4 corner of Section 7. The rest of the section he apparently proportions in. See Oneida County NEPCO notes 199 pdf.

5/28/2009: Michael E. Weber of Eagle Landmark Surveying subdivides Section 7 and can find no evidence of the South 1/4 corner so I established it by single proportion on the Survey map and notes that the corner is to be set later.

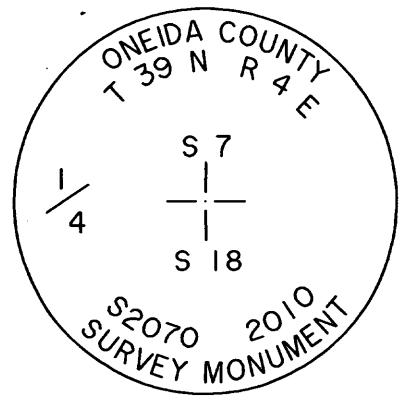
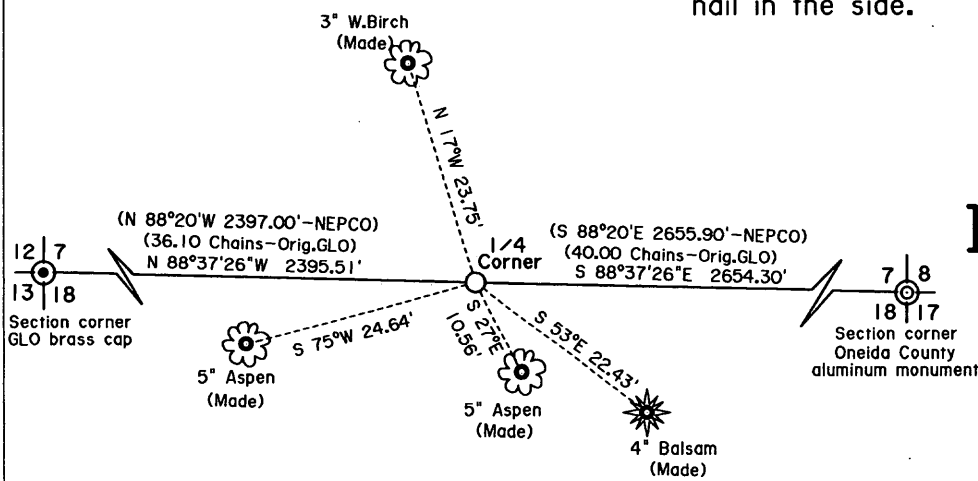
While searching in the area we found a metal corner tag marker very close to the proportioned position. See Oneida County Surveyor file No. B7182 and B7237.

October 25, 2010: I, Michael E. Weber returned to the site and set an Oneida County 2-1/2" x 30" aluminum capped monument stamped as shown below for the new proportioned 1/4 corner. I could find no existing BT's so I made four new BT's as shown below. I also set a plastic guard post 0.8' Northeast of the corner.

(c)(d)(e) Plan view of the corner with ties to at least 4 witness monuments. If in disagreement with previously established corner, show the distances between the two corners and also indicate the ties to the disputed.

Scale: 1" = 20'

NOTE: Bearing trees are measured to a nail in the side.



(i) I, Michael E. Weber R.L.S. No. 2070  
 hereby certify that the corner location on this record was determined by me or under my direction and control and that this U.S. Public Land Survey Monument Record is correct and complete to the best of my knowledge and belief.

Signature Michael E. Weber Date December 14, 2010

WISCONSIN

MICHAEL E. WEBER  
S-2070  
EAGLE RIVER WIS.

LAND SURVEYOR

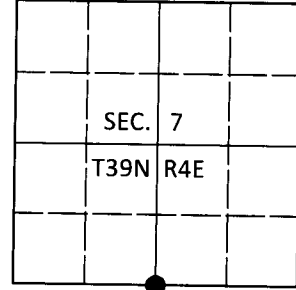
Index No. 3904070020

# U.S. PUBLIC LAND SURVEY MONUMENT RECORD

Note: This form is intended and designed to fulfill all requirements of Wisconsin Administrative Code, Chapter A-E 7.08 U.S. Public Land Survey Monument Record (3)(a-i).

(a) CORNER LOCATION  
 1/4 Cor. of Secs. 7 & 18  
 Township 39 North  
 Range 4 East of the 4th P.M.  
 Town of Minocqua  
 County of Oneida

WISCRS - Oneida County  
 N: 251,645.61 USft  
 E: 105,445.95 USft  
 Datum: NAD83(2011)  
 GNSS Method: RTN - Direct  
 GNSS Control: WISCORS VRS



(b) HISTORY OF ORIGINAL CORNER ESTABLISHMENT

Original Surveyor: \_\_\_\_\_ Original Accessories: \_\_\_\_\_  
 Date of Survey Commenced: \_\_\_\_\_ see previous monument record  
 Completed: \_\_\_\_\_

(b)(f)(g)(h) Description of monument found at this corner and if it was accepted, state all evidence (material, testimonial, occupational, plats, records, other monuments) used as a basis for accepting. If not accepted or if nothing was found, state evidence used as basis for establishing location. If re-established through lost corner proportionate methods, indicate all monuments, distances and directions used to establish. Indicate type of monument and sign post found or set.

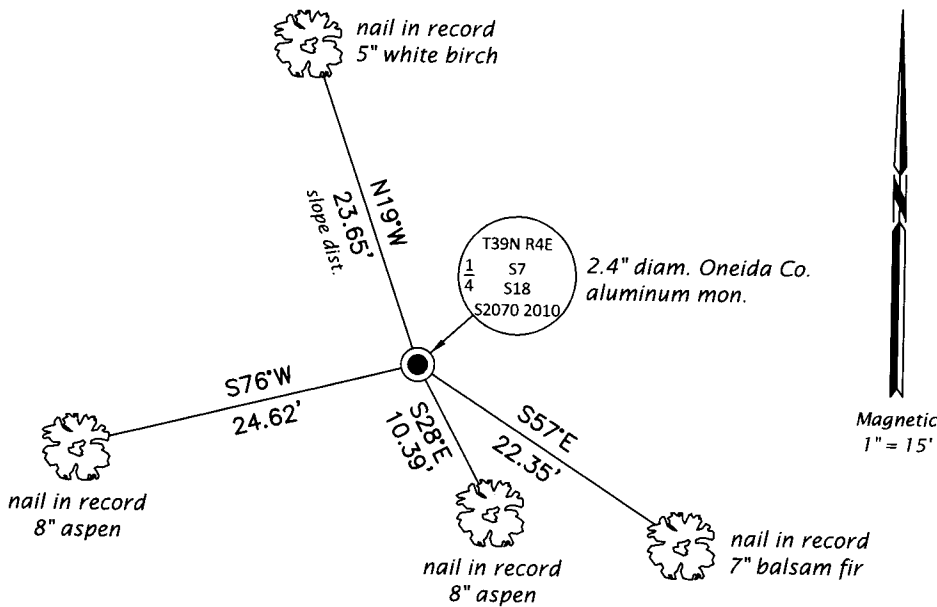
*This is a perpetuation of the following monument record(s) that comprise a complete history of the corner:*

*Dec. 14, 2010: USPLS Monument Record No. 3904070020 by Michael E. Weber, RLS*

*May 17, 2019: I found and accepted the record monument, a 2.4" diam. aluminum pipe with a 3.3" diam. Oneida Co. aluminum cap projecting 2" above the ground surface. I found or established accessories as shown below. I found a white vinyl sign post bearing North, 0.7 ft.*

*The coordinate value shown has been verified by at least one of the following methods: 1) comparison to a previously GPS determined published value; 2) the value is the average of two or more GPS observations at a markedly different time; 3) one or more distances were measured back to the GPS observed corner from temporary GPS observed offset locations.*

(c)(d)(e) Plan view of corner with ties to at least 4 witness monuments. If in disagreement with previously established corner, show the distances between the two corners and also indicate the ties to the disputed.

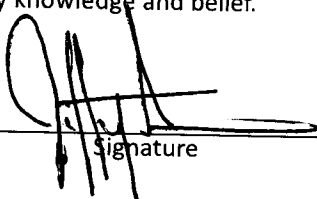


REGISTER OF DEEDS OFFICE  
 ONEIDA COUNTY  
 FILED

JUN 18 2019

KYLE J. FRANSON  
 REGISTER OF DEEDS

(i) I, Jeffrey W. Austin, Professional Land Surveyor No. S-1885, hereby certify that the corner location on this record was determined by me or under my direction and control and that this U.S. Public Land Survey Monument Record is correct and complete to the best of my knowledge and belief.

  
 Signature

1 JUNE 2019  
 Date