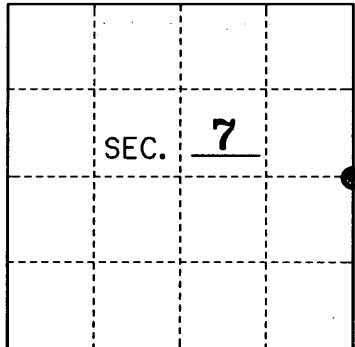


U.S. PUBLIC LAND SURVEY MONUMENT RECORD

Note: This form is intended and designed to fulfill all requirements of Wisconsin Administrative Code, Chapter A-E 7.08 U.S. Public Land Monument Record (3)(a)(b)(c)(d)(e)(f)(g)(h)(i). An additional sheet may be added if necessary to conform with said requirements. Deeds Square

(a) CORNER LOCATION: _____
East 1/4 Corner of Section 7
 Township 39 North, Range 4 East
 Township/City Minocqua
 County of ONEIDA



REGISTER OF DEEDS OFFICE
ONEIDA COUNTY, WIS.

At _____ O'Clock _____ M
THOMAS H. LEIGHTON
 REGISTER OF DEEDS

(b) HISTORY OF ORIGINAL ESTABLISHMENT
 Original Surveyor: Alex Anderson
 Date of Survey: May 1865
 Original B.T.'s:

10" Cedar N 12°E 10 Lks.
 12" Cedar S 3°E 20 Lks.

County or State Plane Coordinates
 Northing _____
 Easting _____
 Datum Base _____

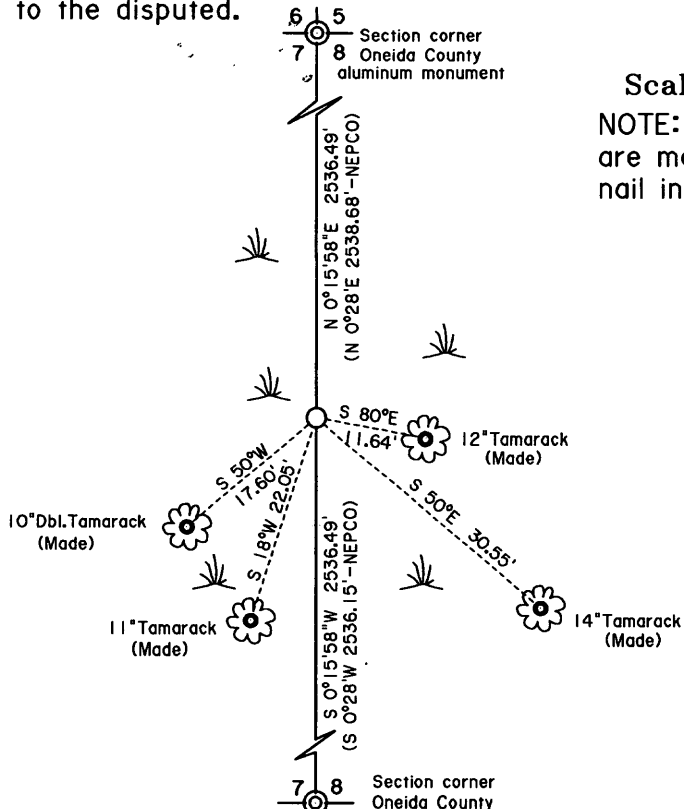
(b)(f)(g)(h) Description of monument found at this corner and if it was accepted, state all evidence (material, testimonial, occupational, plats, records, other monuments) used as a basis for accepting. If not accepted or if nothing was found, state evidence used as basis for establishing location. If reestablished through lost corner proportionate methods, indicate all monuments, distances and directions used to establish. Indicate type of monument and sign post found or set.

2/18/1989: W.H. Stuth of Nekoosa Paper Co. does a transit & chain survey and found the four Section corners and West 1/4 corner of Section 7. The rest of the section he apparently proportions in although the East 1/4 position is off 1.26 feet from the half way point. See Oneida County NEPCO notes 199 pdf.

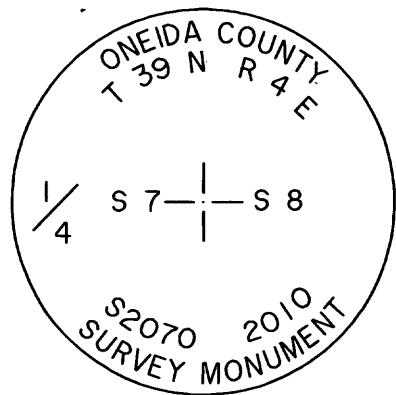
5/28/2009: Michael E. Weber of Eagle Landmark Surveying subdivides Section 7 and can find no evidence of the East 1/4 corner so I established it by single proportion between the Section corners to the North and South and notes that the corner is to be set later. See Oneida County Surveyor file No. B7182 and B7237.

October 25, 2010: I, Michael E. Weber, returned to the site and set an Oneida County 2-1/2" x 60" aluminum capped monument stamped as shown below for the new proportioned 1/4 corner. I could find no existing BT's, so I made four new BT's as shown below and set a plastic guard post 0.8' Northeast of the corner.

(c)(d)(e) Plan view of the corner with ties to at least 4 witness monuments. If in disagreement with previously established corner, show the distances between the two corners and also indicate the ties to the disputed.



Scale: 1" = 20'
 NOTE: Bearing trees are measured to a nail in the side.



(i) I, Michael E. Weber 18 | 17 R.L.S. No. 2070

hereby certify that the corner location on this record was determined by me or under my direction and control and that this U.S. Public Land Survey Monument Record is correct and complete to the best of my knowledge and belief.

Signature Michael E. Weber Date December 14, 2010

Index No. 3904072000