

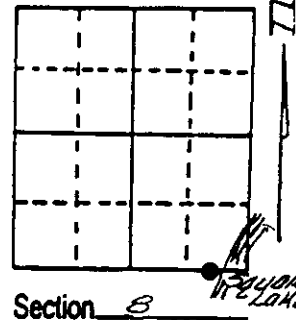
U.S. PUBLIC LAND SURVEY MONUMENT RECORD

Note: This form is intended and designed to fulfill all requirements of Wisconsin Administrative Code, Chapter A-E 7.08 U.S. Public Land Survey Monument Record (3) (a) (b) (c) (d) (e) (f) (g) (h) (i). An additional sheet may be added if necessary to conform with said requirements.

(a) Corner location: Township 30 North
 Range 4 East/West

Town/City/Village Minocqua

County Oneida



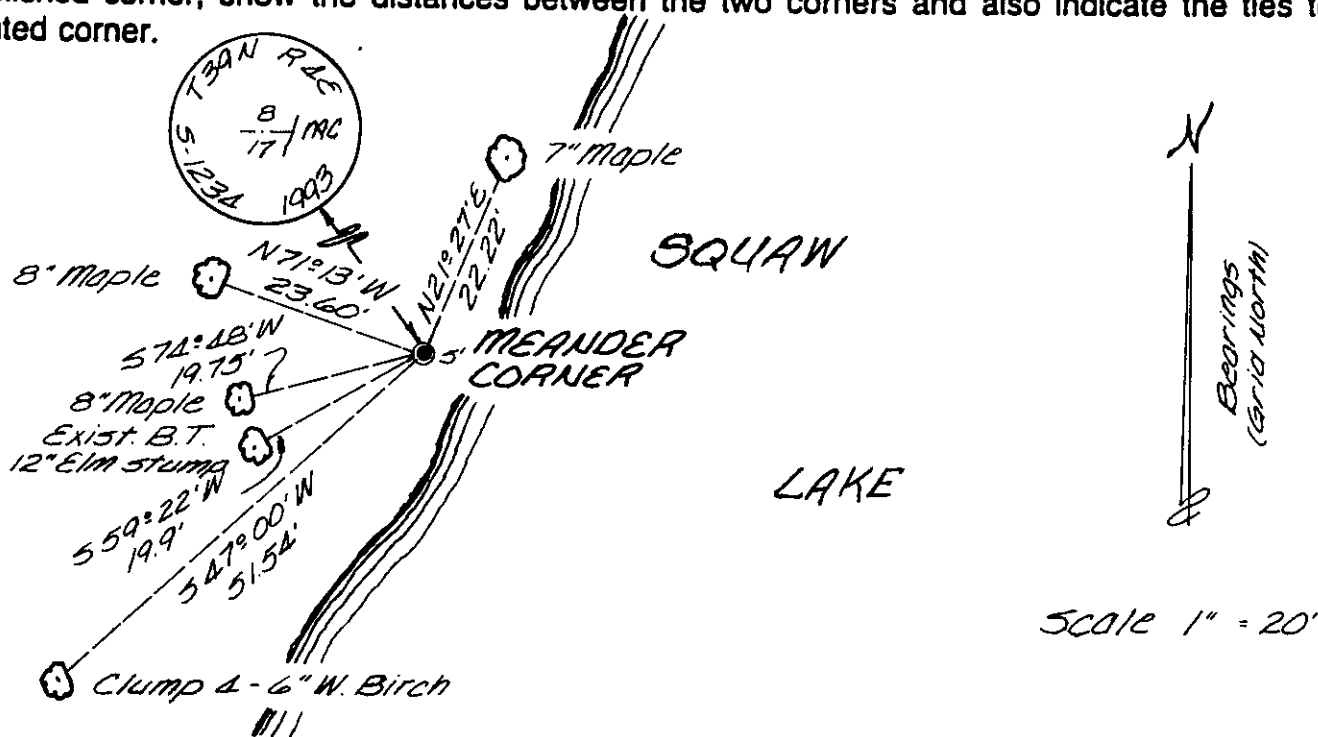
(b) (f) (g) (h) Description of monument found at this corner and if it was accepted, state all evidence (material, testimonial, occupational, plats, records, other monuments) used as a basis for accepting. If not accepted or if nothing was found, state evidence used as basis for establishing location. If reestablished through lost corner proportionate methods, indicate all monuments, distances and directions used to establish. Indicate type of monument found or set and sign post.

May 22, 1865 - Alexander Anderson, Deputy Surveyor, set meander post, referenced by the following bearing trees: Hemlock 10" S45°W, 7 links; and a Sugar 5" N45°W, 15 links.

December 1961 - James G. Griffin, Registered Land Surveyor, on map of survey by Northwoods Surveyors, identifies the corner being monumented by an iron pipe, referenced by a 7" Elm bearing S58°W, 19.7 feet.

December 14, 1992 - James D. Rein, R.L.S. No. 1234, recovered 2" dia. iron pipe, referenced by a 12" Elm stump bearing S59°W, 19.9 feet. We replace the iron pipe with a capped 2" dia. x 30" long flange bottom aluminum monument. Set plastic marker stake along side of monument and made new bearing tree ties as shown in plan view. Distance measurements were made to aluminum nails set in side of bearing trees.

(c) (d) (e) Plan view of corner with ties to at least 4 witness monuments. If in disagreement with previously established corner, show the distances between the two corners and also indicate the ties to the disputed corner.

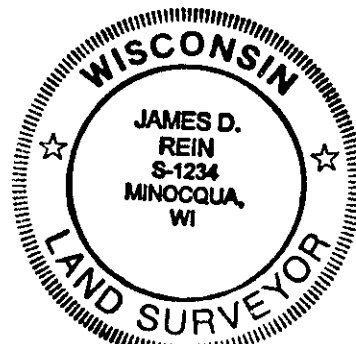


(i) I, James D. Rein, Registered Land Surveyor No. 1234
 (type or print name) certify that the corner location on this record was determined by me or under my direction and control and that this U.S. Public Land Survey Monument Record is correct and complete to the best of my knowledge and belief.

Signature

March 17, 1993

Date



3904080000
 Stamp

Index No. 18-9

U.S. PUBLIC LAND SURVEY MONUMENT RECORD ADDENDUM

Note: This form is intended and designed to fulfill all requirements of the Wisconsin Administrative Code, Chapter A-E 7.08 U.S. Public Land Monument Record (3)(a)(b)(c)(d)(e)(f)(g)(h)(i). An additional sheet may be added if necessary to conform with said requirements.

REGISTER OF DEEDS OFFICE
ONEIDA COUNTY
FILED

JUN 05 2023

(a) CORNER LOCATION:

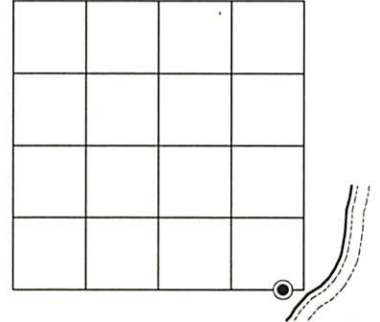
Meander Corner south line of Section 8
Township 39 North
Range 4 East
Town of Minocqua
County of Oneida

North:
East:
Datum: NAD
GNSS Method:
GNSS Control:

KYLE J. FRANSON
REGISTER OF DEEDS

(RECORDING AREA)

SECTION 8



(b) HISTORY OF ORIGINAL CORNER ESTABLISHMENT

Original Surveyor:
Date of Survey: Commenced
Completed
Original B.T.'S

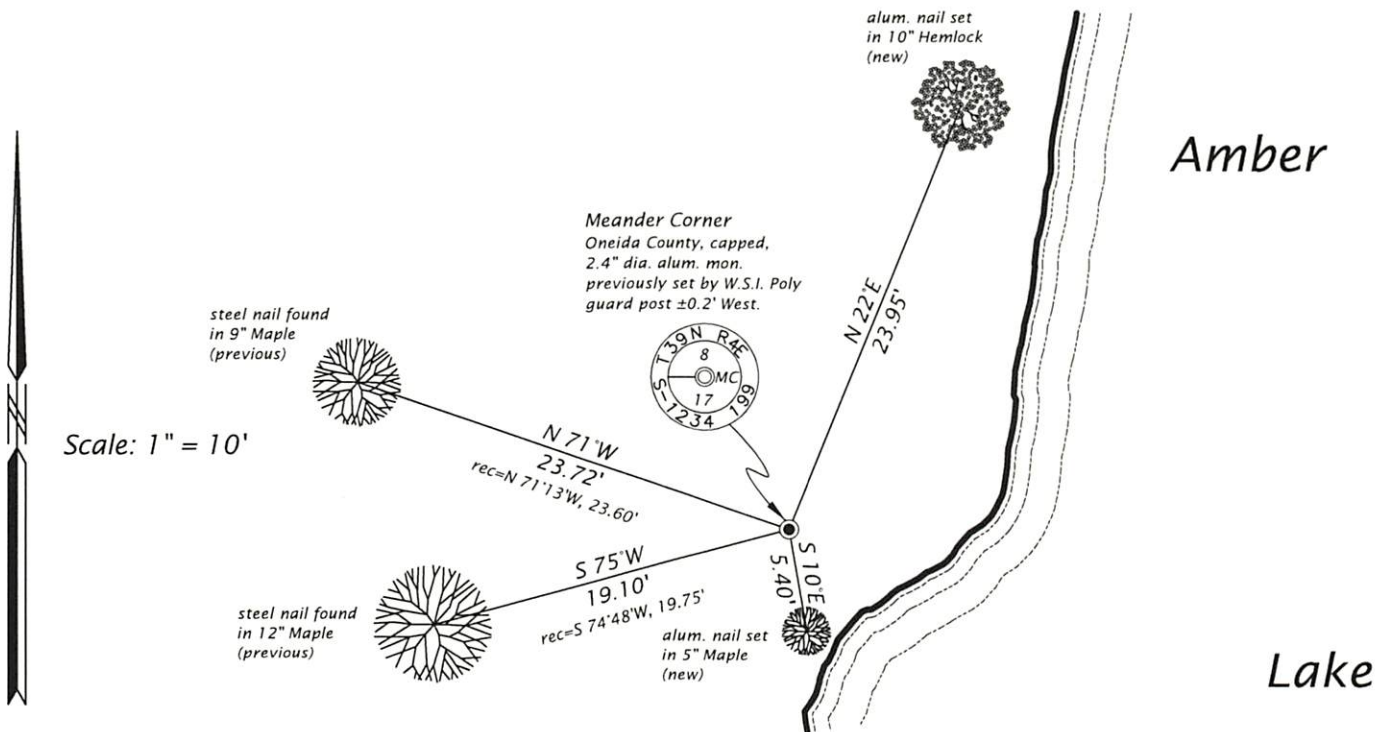
SEE PREVIOUS U.S.P.L.S. MONUMENT
RECORD DATED MARCH 17, 1993

(f)(g)(h) DESCRIPTION OF MONUMENT FOUND AT THIS CORNER AND IF IT WAS ACCEPTED, STATE ALL EVIDENCE (MATERIAL, TESTIMONIAL, OCCUPATIONAL, PLATS, RECORD, OTHER MONUMENTS) USED AS A BASIS FOR ESTABLISHING LOCATION. IF NOT ACCEPTED OR IF NOTHING WAS FOUND, STATE EVIDENCE USED AS BASIS FOR ESTABLISHING LOCATION. IF REESTABLISHED THROUGH LOST CORNER PROPORTIONATE METHODS, INDICATE ALL MONUMENTS, DISTANCES AND DIRECTIONS USED TO ESTABLISH. INDICATE TYPE OF MONUMENT AND SIGN POST FOUND OR SET.

This is a perpetuation of a previous U.S.P.L.S. Monument Record by James D. Rein, RLS-1234, dated March 17, 1993, and filed in the office of the Oneida County Register of Deeds. A complete history of the corner can be found on the previous monument record. I accept the previous location as a true and faithful perpetuation or reestablishment of the original corner location and further perpetuate it as follows.

May 9, 2023, James D. Rein, PLS No. S-1234, we found and I accepted the Oneida County, capped, 2.4" dia. aluminum monument up 12". We further perpetuate it as shown in the plan. The northeasterly maple and southwesterly clump of birch are now gone. See below for two additional bearing trees and updated ties to the recovered references.

(c)(d)(e) PLAN VIEW OF CORNER WITH TIES TO AT LEAST 4 WITNESS MONUMENTS. IF IN DISAGREEMENT WITH PREVIOUSLY ESTABLISHED CORNER, SHOW THE DISTANCE BETWEEN THE TWO CORNERS AND ALSO INDICATE THE TIES TO THE DISPUTED CORNER.



(i) I, JAMES D. REIN, PROFESSIONAL LAND SURVEYOR NO. S-1234 HEREBY CERTIFY THAT THE CORNER LOCATION ON THIS RECORD WAS DETERMINED BY ME OR UNDER MY DIRECTION AND CONTROL AND THAT THIS U.S. PUBLIC LAND SURVEY MONUMENT RECORD IS CORRECT AND COMPLETE TO THE BEST OF MY KNOWLEDGE AND BELIEF.



James D. Rein
SIGNATURE

5/17/23
DATE

INDEX NO. 18-9
3904080006