

U.S. PUBLIC LAND SURVEY MONUMENT RECORD
At O'Clock M
REGISTER OF DEEDS

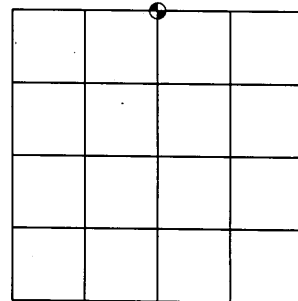
Note: This form is intended and designed to fulfill all requirements of the Wisconsin Administrative Code, Chapter A-E 7.08 U.S. Public Land Monument Record (3)(a)(b)(c)(d)(e)(f)(g)(h)(i). An additional sheet may be added if necessary to conform with said requirements.

(a) CORNER LOCATION:

North quarter corner of Section 17
Township 39 North
Range 4 East
Town of Minocqua
County of Oneida

COORDINATES

North: 251512.1075
East: 110754.5651
Control Station: O.C. #296
Latitude: 45°53'30.17969"N
Longitude: 90°01'58.94238"W
Datum: NAD 83 (1991) Method: RTK



SECTION 17

(b) HISTORY OF ORIGINAL CORNER ESTABLISHMENT

Original Surveyor: Alexander Anderson
Date of Survey: Commenced - May 9th, 1865
Completed - May 22nd, 1865

Original B.T.'S: Tamarack 8" N82°W 14 links
Fir 8" S36°E 11 links

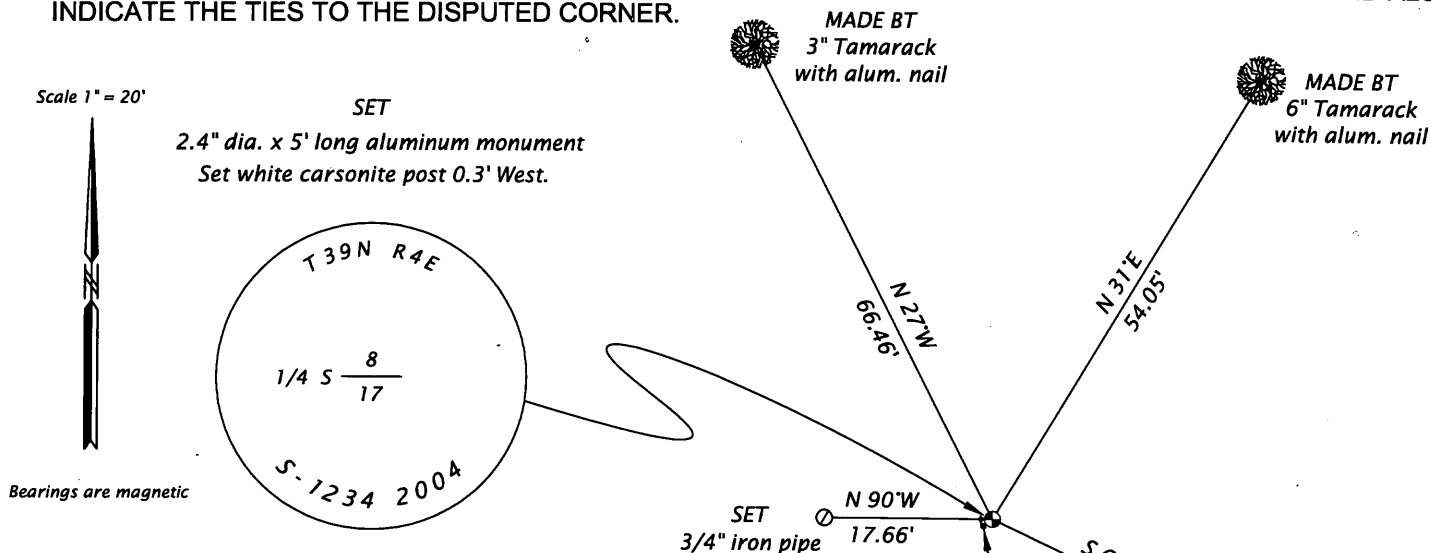
(f)(g)(h) DESCRIPTION OF MONUMENT FOUND AT THIS CORNER AND IF IT WAS ACCEPTED, STATE ALL EVIDENCE (MATERIAL, TESTIMONIAL, OCCUPATIONAL, PLATS, RECORDS, OTHER MONUMENTS) USED AS A BASIS FOR ESTABLISHING LOCATION. IF NOT ACCEPTED OF IF NOTHING WAS FOUND, STATE EVIDENCE USED AS BASIS FOR ESTABLISHING LOCATION. IF REESTABLISHED THROUGH LOST CORNER PROPORTIONATE METHODS, INDICATE ALL MONUMENTS, DISTANCES AND DIRECTIONS USED TO ESTABLISH. INDICATE TYPE OF MONUMENT AND SIGN POST FOUND OR SET.

December 23rd, 1930 - H.C. Hall, surveyor, per notes filed at the Oneida County Land Records office in Hall Book No. 1 page No. 132, at "the Origl 1/4 S. between Secs. 8 & 17 found old stake with cruisers names...Drove dry Cedar post just E of old stake and mark V1°20'E, dead Cedar 11" N6°E .50 ch, dead Cedar 10" S32°E .25 ch."

March 1963 - Map prepared by W.H. Stuth on February 16th, 1989 (Filed in NEPCO Book No. 2 Page No. 200 at the Oneida County Land Records office) indicates a Scribed Post.

June 17, 2004 - James D. Rein, RLS No. 1234, Recovered an old channel fence post up 2.5 feet alongside a 3" squared wood post up 4 feet. Accepted fence post as marking the corner location. Replaced fence post with monument and accessories as shown in plan.

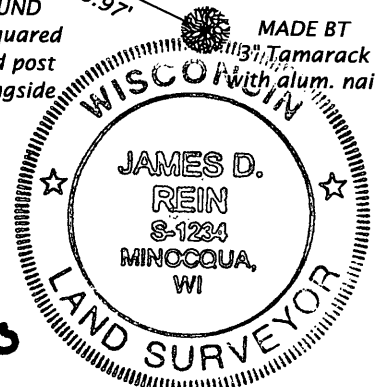
(c)(d)(e) PLAN VIEW OF CORNER WITH TIES TO AT LEAST 4 WITNESS MONUMENTS. IF IN DISAGREEMENT WITH PREVIOUSLY ESTABLISHED CORNER, SHOW THE DISTANCE BETWEEN THE TWO CORNERS AND ALSO INDICATE THE TIES TO THE DISPUTED CORNER.



(i) I, JAMES D. REIN, REGISTERED LAND SURVEYOR NO. S-1234 HEREBY CERTIFY THAT THE CORNER LOCATION ON THIS RECORD WAS DETERMINED BY ME OR UNDER MY DIRECTION AND CONTROL AND THAT THIS U.S. PUBLIC LAND SURVEY MONUMENT RECORD IS CORRECT AND COMPLETE TO THE BEST OF MY KNOWLEDGE AND BELIEF.

SIGNATURE *[Handwritten Signature]*

DATE 6/17/2004
3904080020



INDEX NO. 5-7