

U.S. PUBLIC LAND SURVEY MONUMENT RECORD

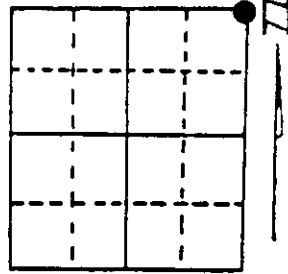
Note: This form is intended and designed to fulfill all requirements of Wisconsin Administrative Code, Chapter A-E 7.08 U.S. Public Land Survey Monument Record (3) (a) (b) (c) (d) (e) (f) (g) (h) (i). An additional sheet may be added if necessary to conform with said requirements.

(a) Corner location: Township 39 North

Range 4 East/West

Town/City/Village Minocqua

County Oneida



Section 16

(b) (f) (g) (h) Description of monument found at this corner and if it was accepted, state all evidence (material, testimonial, occupational, plats, records, other monuments) used as a basis for accepting. If not accepted or if nothing was found, state evidence used as basis for establishing location. If reestablished through lost corner proportionate methods, indicate all monuments, distances and directions used to establish. Indicate type of monument found or set and sign post.

May, 1865 - Alex Anderson, Deputy Surveyor, ~~set~~ section post, referenced by the following bearing trees: Spruce 5" S39°E, 21 links; and by a Spruce 7" S49°W, 32 links.

February, 1925 - C. D. Vaughan, Surveyor, Oneida County Surveyor's Field Book #38, found original post and SE bearing tree with scribing plain. Made bearing trees: 6" Spruce N67½°W, 96 links; and a 4" Spruce S43°W, 58¾ links.

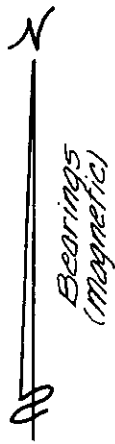
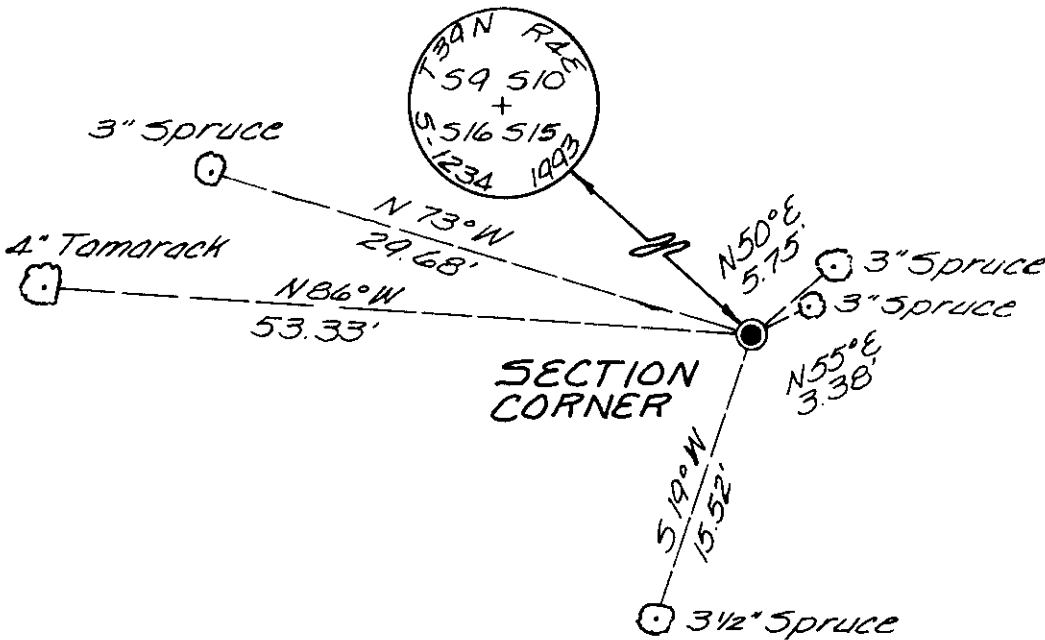
Nov. 14th, 1930 - Harry Hall, Oneida County Surveyor, identify Orig. SE cor. Sec. 9, as marked by C. D. Vaughan's post in Spruce swamp. Stumps check OK. No scribe marks left.

Jan. 2, 1947 - E. F. Kowalke, Surveyor, in Field Book 5, page 13 for a survey in Section 10, identify corner being monumented by "Old post & B.T. in swamp (Hall?)".

June 23, 1947 - E. F. Kowalke and W. A. Hennig, Surveyors, map of survey in Gov't. Lot 5, Section 9, identifies section corner monumented by 2" iron pipe.

March 1st, 1993 - James D. Rein, R.L.S. No. 1234, we recover a 2" dia. iron pipe with a plumber cap, the position of which, is harmonious with previous surveys. Thus we replaced the pipe with a capped 2" dia. x 30" long flange bottom aluminum monument. Set a plastic marker stake ½ foot south of corner and made new bearing trees in plan view. Reference tie distance measurements were made to aluminum nails set in side of bearing trees.

(c) (d) (e) Plan view of corner with ties to at least 4 witness monuments. If in disagreement with previously established corner, show the distances between the two corners and also indicate the ties to the disputed corner.

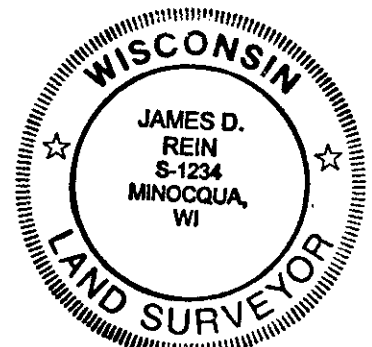


Scale 1" = 10'

(i) I, James D. Rein, Registered Land Surveyor No. 1234
(type or print name) certify that the corner location on this record was determined by me or under my direction and control and that this U.S. Public Land Survey Monument Record is correct and complete to the best of my knowledge and belief.

[Handwritten Signature]
Signature

March 17, 1993
Date



3904090000
Stamp

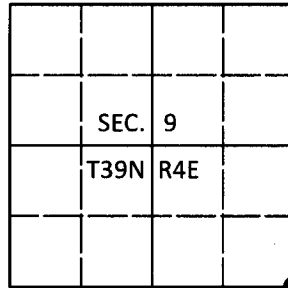
Index No. 7-13

U.S. PUBLIC LAND SURVEY MONUMENT RECORD

Note: This form is intended and designed to fulfill all requirements of Wisconsin Administrative Code, Chapter A-E 7.08 U.S. Public Land Survey Monument Record (3)(a-i).

(a) CORNER LOCATION
 Cor. of Secs. 9, 10, 15 & 16
 Township 39 North
 Range 4 East of the 4th P.M.
 Town of Minocqua
 County of Oneida

WISCRS - Oneida County
 N: 251,697.58 USft
 E: 118,127.07 USft
 Datum: NAD 83(2011)
 GNSS Method: RTN - Direct
 GNSS Control: WISCORS VRS



(b) HISTORY OF ORIGINAL CORNER ESTABLISHMENT

Original Surveyor: _____ Original Accessories: _____
 Date of Survey Commenced: _____ See previous USPLS Monument Record
 Completed: _____

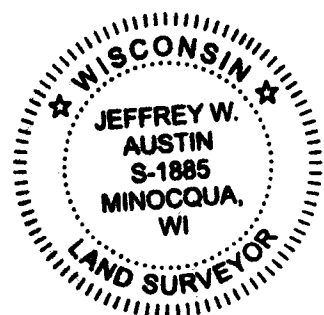
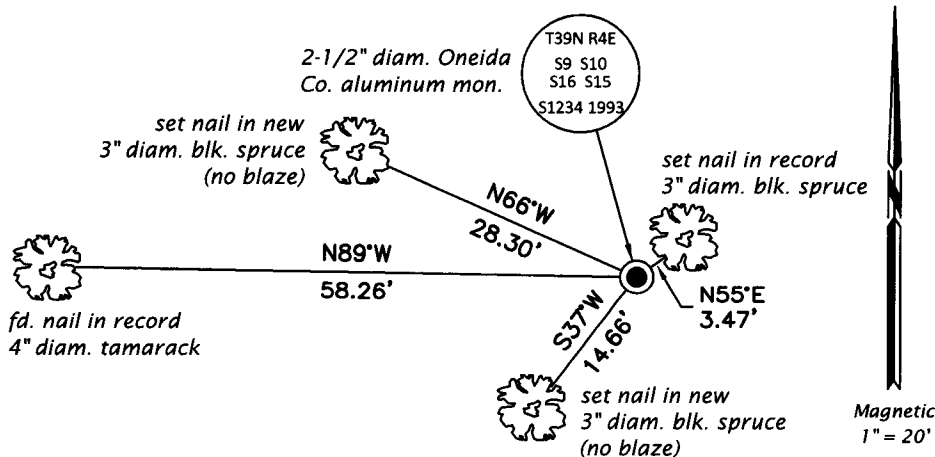
(b)(f)(g)(h) Description of monument found at this corner and if it was accepted, state all evidence (material, testimonial, occupational, plats, records, other monuments) used as a basis for accepting. If not accepted or if nothing was found, state evidence used as basis for establishing location. If re-established through lost corner proportionate methods, indicate all monuments, distances and directions used to establish. Indicate type of monument and sign post found or set.

This is a perpetuation of a previous USPLS Monument Record by James D. Rein, RLS dated March 17, 1993 and filed in the office of the Oneida County Register of Deeds. A complete history of the corner can be found on the previous monument record. I accept the previous location as a true and faithful perpetuation or reestablishment of the original corner location and further perpetuate it as follows.

April 19, 2018: I found and accepted the record monument, a 2-1/2" diam. aluminum pipe with a 3-1/4" diam. Oneida Co. aluminum cap flush with the bog surface. The record bearing trees at 5.75' and 15.52' are gone. The record bearing tree at 29.68' is standing dead. I found or established accessories as shown below. I found a white vinyl sign post bearing South, 0.8 ft.

The coordinate value shown has been verified by at least one of the following methods: 1) comparison to a previously GPS determined published value; 2) the value is the average of two or more GPS observations at a markedly different time; 3) one or more distances were measured back to the GPS observed corner from temporary GPS observed offset locations.

(c)(d)(e) Plan view of corner with ties to at least 4 witness monuments. If in disagreement with previously established corner, show the distances between the two corners and also indicate the ties to the disputed.

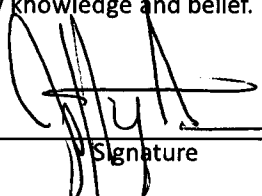


REGISTER OF DEEDS OFFICE
 ONEIDA COUNTY
 FILED

MAY 01 2018

KYLE J. FRANCON
 REGISTER OF DEEDS

(i) I, Jeffrey W. Austin, Professional Land Surveyor No. S-1885, hereby certify that the corner location on this record was determined by me or under my direction and control and that this U.S. Public Land Survey Monument Record is correct and complete to the best of my knowledge and belief.

 APR. 23, 2018

 Signature Date