

At 10 O'Clock AM
THOMAS H. LEIGHTON
REGISTER OF DEEDS

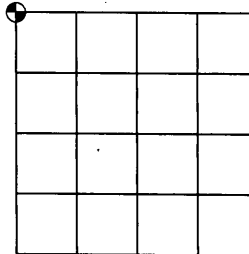
U.S. PUBLIC LAND SURVEY MONUMENT RECORD

Note: This form is intended and designed to fulfill all requirements of the Wisconsin Administrative Code, Chapter A-E 7.08 U.S. Public Land Monument Record (3)(a)(b)(c)(d)(e)(f)(g)(h)(i). An additional sheet may be added if necessary to conform with said requirements.

(a) CORNER LOCATION:

NW corner of Section 14
Township 39 North
Range 4 East
Town of Minocqua
County of Oneida

ONEIDA COUNTY
GRID COORDINATES
North: 251641.34
East: 123405.76
Control Station: Vilas County 310S
Latitude: 45-55-08.39995
Longitude: 89-59-22.41041
Datum: NAD 83 (1991) Method: RTK



(b) HISTORY OF ORIGINAL CORNER ESTABLISHMENT

Original Surveyor: Alex Anderson
Date of Survey: Commenced May 9, 1865
Completed May 22, 1865

Original B.T.'S: 2" Cherry, S8°W, 9 links
2" Cherry, S32°E, 21 links

SECTION 14

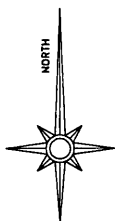
(f)(g)(h) DESCRIPTION OF MONUMENT FOUND AT THIS CORNER AND IF IT WAS ACCEPTED, STATE ALL EVIDENCE (MATERIAL, TESTIMONIAL, OCCUPATIONS, PLATS, RECORDS, OTHER MONUMENTS) USED AS A BASIS FOR ESTABLISHING LOCATION. IF NOT ACCEPTED OF IF NOTHING WAS FOUND, STATE EVIDENCE USED AS BASIS FOR ESTABLISHING LOCATION. IF REESTABLISHED THROUGH LOST CORNER PROPORTIONATE METHODS, INDICATE ALL MONUMENTS, DISTANCES AND DIRECTIONS USED TO ESTABLISH. INDICATE TYPE OF MONUMENT AND SIGN POST FOUND OR SET.

1962 +/- W.H. Stuth: NEPCO map for Section 11, prepared in February 1989, does not describe monument type, or any accessory ties. The map shows dimensional ties to the West Quarter Corner and southeast corner of Section 11.

October 20, 1978: B. Roberts and R. Messier, field notes by John H. Fisher & Associates, recover nail at base of a 6" x 6" post. No pipe or bearing trees were noted as being recovered.

June 18, 2003: James D. Rein, RLS No. 1234, recovered a spike and an old rotted down post, referenced by an 8" W. Birch tree with a NEPCO tag. I accept the spike as the best evidence of the original corner position and replace it with capped 2.4" OD aluminum monument extending 3" above ground. We placed a Carsonite type white stake 1 foot north of the corner monument and made additional bearing trees as shown in the plan view.

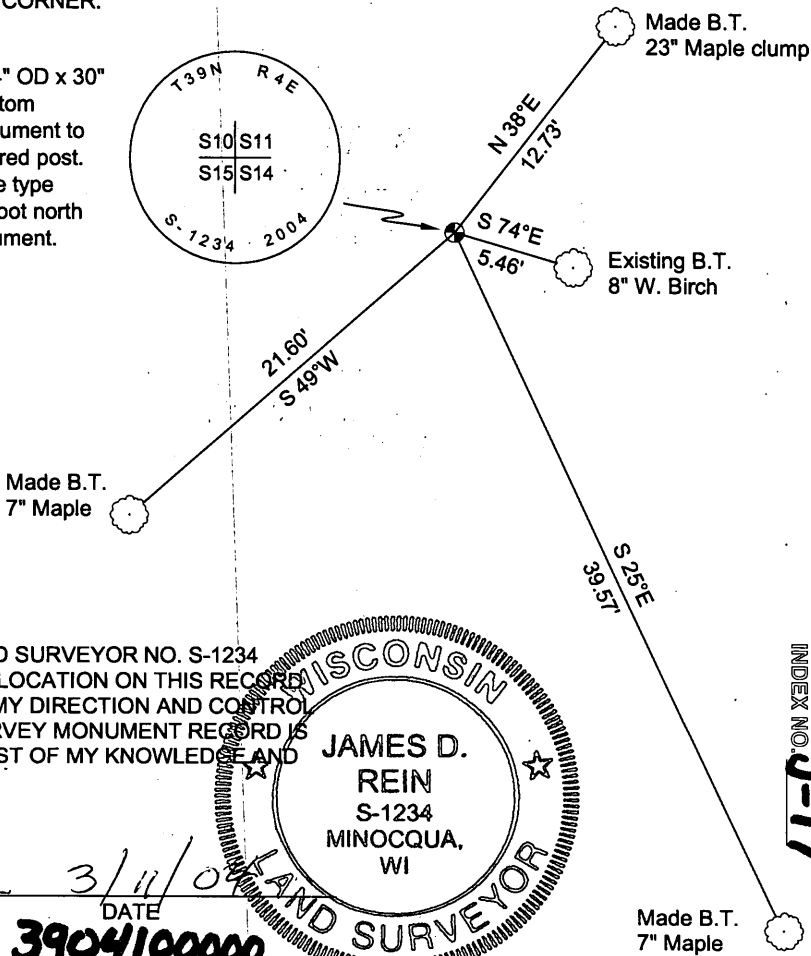
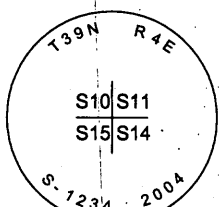
(c)(d)(e) PLAN VIEW OF CORNER WITH TIES TO AT LEAST 4 WITNESS MONUMENTS. IF IN DISAGREEMENT WITH PREVIOUSLY ESTABLISHED CORNER, SHOW THE DISTANCE BETWEEN THE TWO CORNERS AND ALSO INDICATE THE TIES TO THE DISPUTED CORNER.



Bearings are magnetic

Scale: 1" = 10'

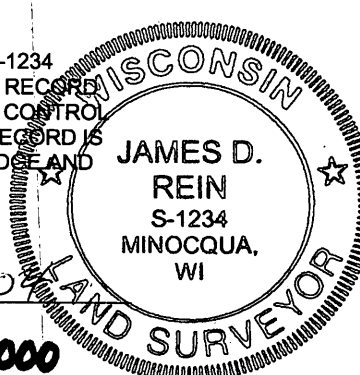
Set capped 2.4" OD x 30" long flange bottom aluminum monument to replace recovered post. Set a Carsonite type white stake 1 foot north of corner monument.



(i) I, JAMES D. REIN, REGISTERED LAND SURVEYOR NO. S-1234 HEREBY CERTIFY THAT THE CORNER LOCATION ON THIS RECORD WAS DETERMINED BY ME OR UNDER MY DIRECTION AND CONTROL AND THAT THIS U.S. PUBLIC LAND SURVEY MONUMENT RECORD IS CORRECT AND COMPLETE TO THE BEST OF MY KNOWLEDGE AND BELIEF.

[Handwritten Signature]
SIGNATURE

3/11/04
DATE
390410000



INDEX NO. 5-17