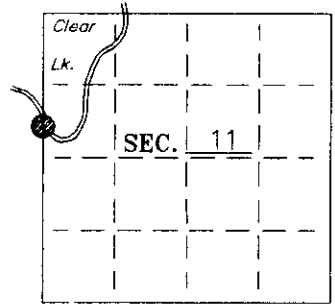


U. S. PUBLIC LAND SURVEY MONUMENT RECORD

Note: This form is intended and designed to fulfill all requirements of Wisconsin Administrative Code—Chapter A-E 7.08 U. S. Public Land Survey Monument Record (3)(a)(b)(c)(d)(e)(f)(g)(h)(i). An additional sheet may be added if necessary to conform with said requirements.

(a) CORNER LOCATION: State Plane Coordinates
Meander corner of Sec. 11 X ---
 Township 39 North Y ---
 Range 4 East Datum Base ---
 Town Minocqua County of Oneida



(b) HISTORY OF ORIGINAL CORNER ESTABLISHMENT: Original B.T.'S
 Original Surveyor: A. Anderson
 Date of Survey: Commenced May, 1865
 Completed May, 1865
 Hemlock 10 N78°W 4 links (2.64')
 Hemlock 18 S15°E 28 links

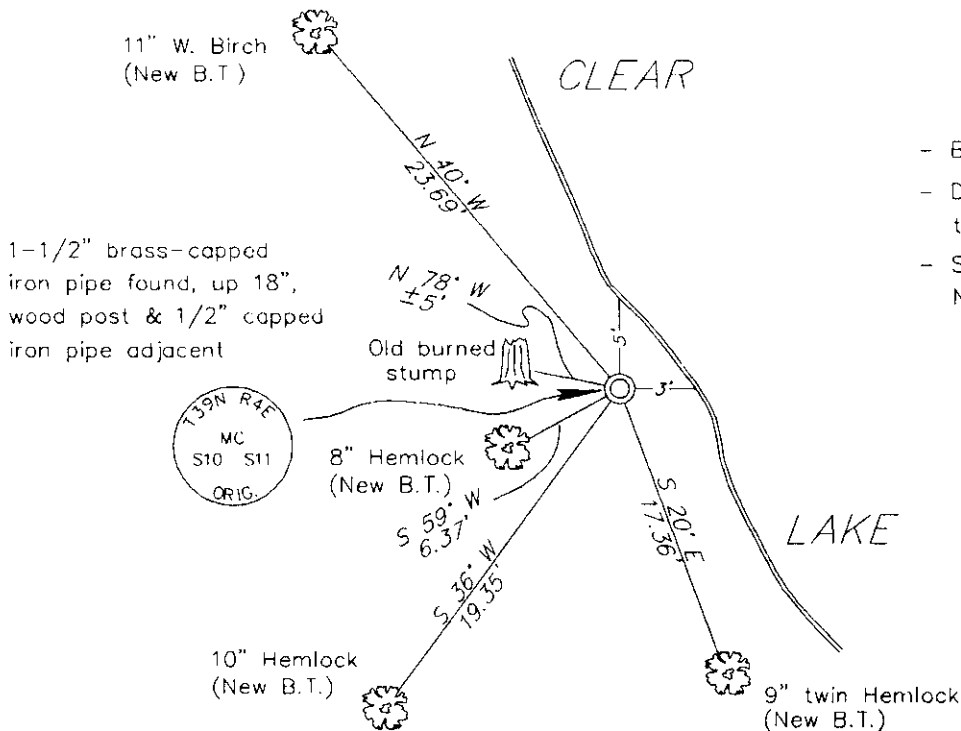
(b)(f)(g)(h) Description of monument found at this corner and if it was accepted—state all evidence (material—testimonial—occupation—plats—records—other monuments) used as a basis for accepting. If not accepted or if nothing was found state evidence used as basis for establishing location. If reestablished through lost corner proportionate methods indicate all monuments—distances and directions used to establish. Indicate type of monument and sign post found or set.

1865— Alex Anderson set meander corner and made B.T.'s.

1989-- NEPCO survey field notes show William Stuth accepted positions for both the meander corner and the W1/4 to the south. He called both corners original and measured 558.36' between them.

1998-- I found brass-capped iron pipes at the M.C. and W1/4 locations, measured 557.12' between them and found an old pine stump, possibly the orig. NW Bt. I accepted this corner as being correct and made the following Bt.'s. as shown below.

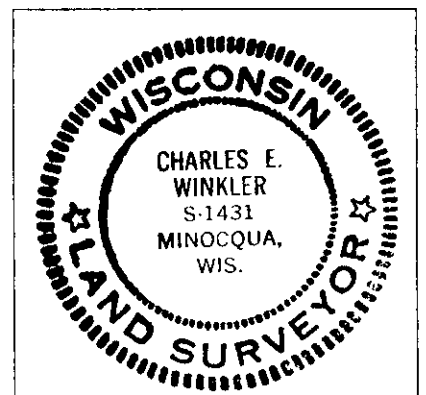
(c)(d)(e) Plan view of corner with ties to at least 4 witness monuments. If in disagreement with previously established corner—show the distances between the two corners and also indicate the ties to the disputed.



- Blazed new B.T.'s.
- Dist.'s measured to alum. nails set in the side of each bearing tree.
- Set white plastic sign post 1' North.

(i) I Charles E. Winkler S-1431
 hereby certify that the corner location on this record was determined by me or under my direction and control and that this U.S. Public Land Survey Monument Record is correct and complete to the best of my knowledge and belief.

Charles E. Winkler 7/9/1999
 Signature Foltz and Associates, Inc. Date



INDEX NO. XX
 FG 17

3904102400