

At _____ O'Clock _____ M
THOMAS H. LEIGHTON
REGISTER OF DEEDS

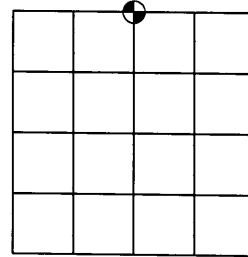
U.S. PUBLIC LAND SURVEY MONUMENT RECORD

Note: This form is intended and designed to fulfill all requirements of the Wisconsin Administrative Code, Chapter A-E 7.08 U.S. Public Land Monument Record (3)(a)(b)(c)(d)(e)(f)(g)(h)(i). An additional sheet may be added if necessary to conform with said requirements.

(a) CORNER LOCATION:

N 1/4 corner of Sec. 14
Township 39 North
Range 4 East
Town of Minocqua
County of Oneida

ONEIDA COUNTY
GRID COORDINATES
North: 251572.10
East: 125956.69
Control Station: Vilas County 310S
Latitude: 45-55-08.39995
Longitude: 89-59-22.41041
Datum: NAD 83 (1991) Method: RTK



(b) HISTORY OF ORIGINAL CORNER ESTABLISHMENT

Original Surveyor: Alex Anderson
Date of Survey: Commenced May 9, 1865
Completed May 22, 1865

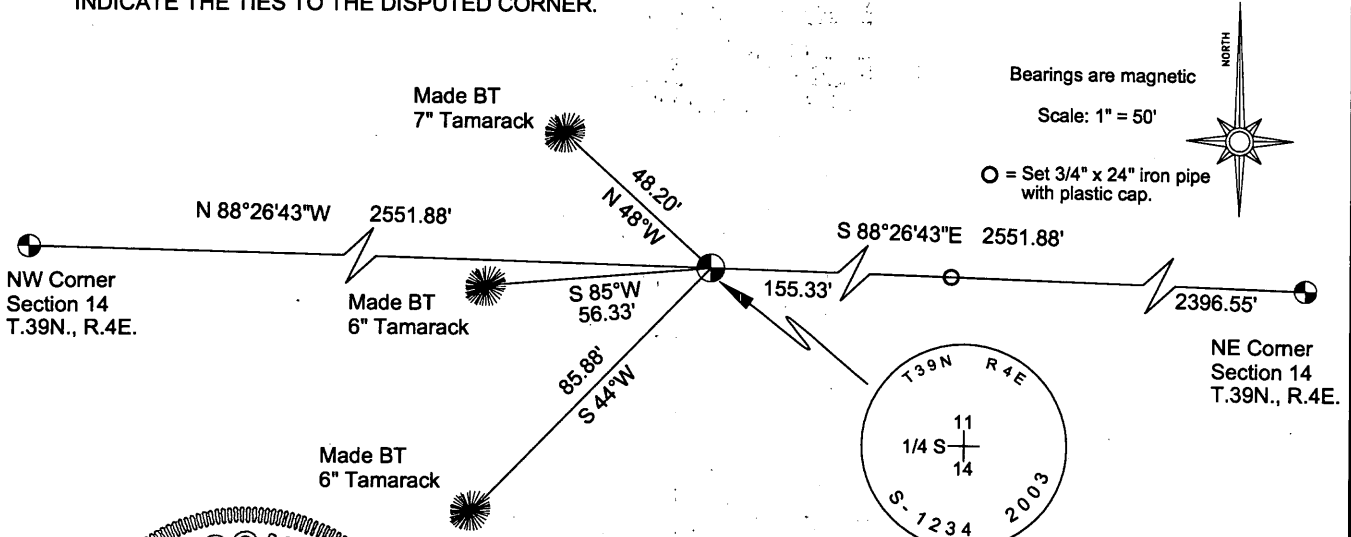
Original B.T.'S: 10" Birch, N65°W, 45 links
4" Alder, S5°E, 4 links

SECTION 14

(f)(g)(h) DESCRIPTION OF MONUMENT FOUND AT THIS CORNER AND IF IT WAS ACCEPTED, STATE ALL EVIDENCE (MATERIAL, TESTIMONIAL, OCCUPATIONS, PLATS, RECORDS, OTHER MONUMENTS) USED AS A BASIS FOR ESTABLISHING LOCATION. IF NOT ACCEPTED, IF NOTHING WAS FOUND, STATE EVIDENCE USED AS BASIS FOR ESTABLISHING LOCATION. IF REESTABLISHED THROUGH LOST CORNER PROPORTIONATE METHODS, INDICATE ALL MONUMENTS, DISTANCES AND DIRECTIONS USED TO ESTABLISH. INDICATE TYPE OF MONUMENT AND SIGN POST FOUND OR SET.

June 18, 2003: James D. Rein, RLS No. 1234, after thorough search, we were unable to find any evidence of the original corner, thus I re-established it by single proportionate measurement between the recovered northeast and northwest corners of Section 14. We monumented the re-established corner position in a wetland area with a capped 2.4" outside diameter x 60" long Oneida County aluminum monument extending 8" above ground level. We placed a white county Carsonite type stake 1.40 feet southeast of the corner and also set an iron pipe and made three bearing trees, with distance measurements to aluminum nails set in center of the tree root crowns on side facing the corner for reference ties as shown in the plan view.

(c)(d)(e) PLAN VIEW OF CORNER WITH TIES TO AT LEAST 4 WITNESS MONUMENTS. IF IN DISAGREEMENT WITH PREVIOUSLY ESTABLISHED CORNER, SHOW THE DISTANCE BETWEEN THE TWO CORNERS AND ALSO INDICATE THE TIES TO THE DISPUTED CORNER.



(i) I, JAMES D. REIN, REGISTERED LAND SURVEYOR NO. S-1234 HEREBY CERTIFY THAT THE CORNER LOCATION ON THIS RECORD WAS DETERMINED BY ME OR UNDER MY DIRECTION AND CONTROL AND THAT THIS IS A PUBLIC LAND SURVEY MONUMENT RECORD IS CORRECT AND COMPLETE TO THE BEST OF MY KNOWLEDGE AND BELIEF.

JAMES D. REIN
S-1234
MINOCQUA, WI
LAND SURVEYOR

3/11/04
DATE

3904110020

INDEX NO. 5-19

U.S. PUBLIC LAND SURVEY MONUMENT RECORD ADDENDUM

Note: This form is intended and designed to fulfill all requirements of the Wisconsin Administrative Code, Chapter A-E 7.08 U.S. Public Land Monument Record (3)(a)(b)(c)(d)(e)(f)(g)(h)(i). An additional sheet may be added if necessary to conform with said requirements.

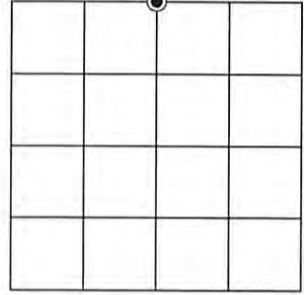
(a) CORNER LOCATION:

North Quarter Corner of Section 14
Township 39 North
Range 4 East
Town of Minocqua
County of Oneida

North:
East:
Datum:
GNSS Method:
GNSS Control:

(RECORDING AREA)

SECTION 14



(b) HISTORY OF ORIGINAL CORNER ESTABLISHMENT

Original Surveyor:
Date of Survey: Commenced
Completed
Original B.T.'S

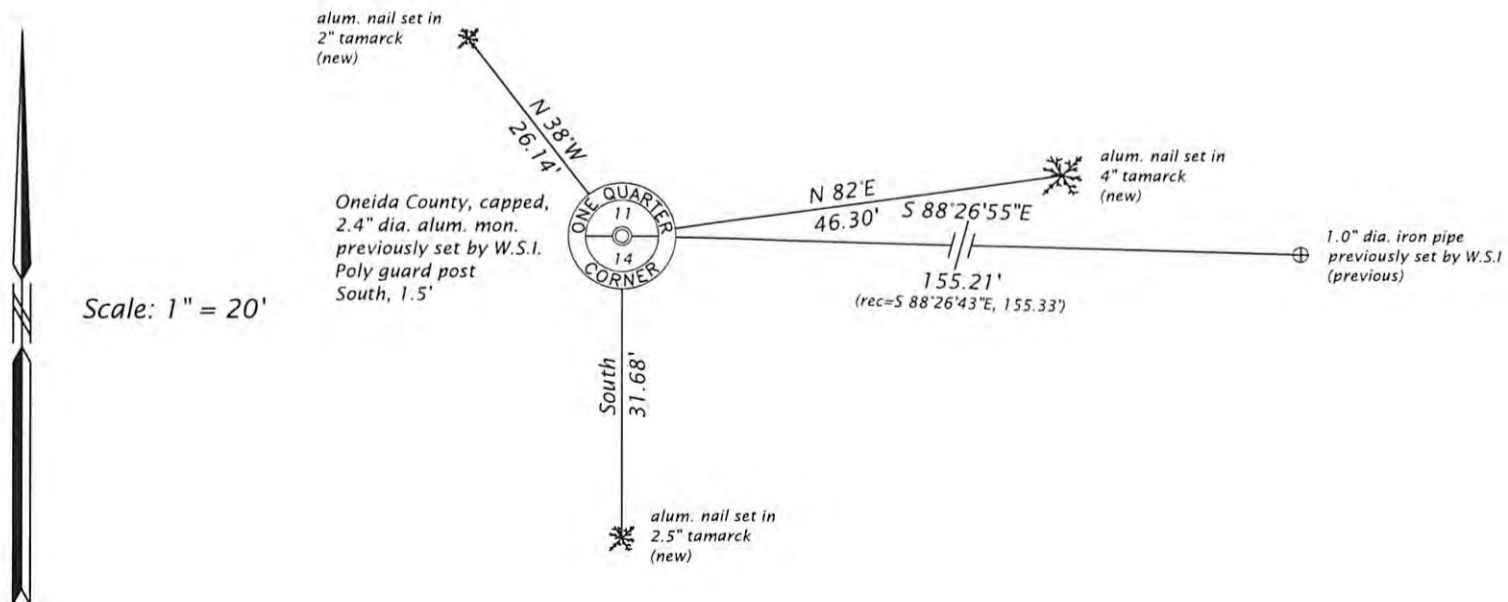
SEE PREVIOUS U.S.P.L.S. MONUMENT RECORD DATED MARCH 11, 2004

(f)(g)(h) DESCRIPTION OF MONUMENT FOUND AT THIS CORNER AND IF IT WAS ACCEPTED, STATE ALL EVIDENCE (MATERIAL, TESTIMONIAL, OCCUPATIONAL, PLATS, RECORD, OTHER MONUMENTS) USED AS A BASIS FOR ESTABLISHING LOCATION. IF NOT ACCEPTED OR IF NOTHING WAS FOUND, STATE EVIDENCE USED AS BASIS FOR ESTABLISHING LOCATION. IF REESTABLISHED THROUGH LOST CORNER PROPORTIONATE METHODS, INDICATE ALL MONUMENTS, DISTANCES AND DIRECTIONS USED TO ESTABLISH. INDICATE TYPE OF MONUMENT AND SIGN POST FOUND OR SET.

This is a perpetuation of a previous U.S.P.L.S. Monument Record by James D. Rein, RLS-1234, dated March 11, 2004, and filed in the office of the Oneida County Register of Deeds. A complete history of the corner can be found on the previous monument record. I accept the previous location as a true and faithful perpetuation or reestablishment of the original corner location and further perpetuate it as follows.

September 3, 2025, James D. Rein, PLS No. S-1234, we found and I accepted our previously set capped, 2.4" dia. Oneida County aluminum monument. We further perpetuate it as shown in the plan. The southwesterly and northwesterly tamarcks are now gone or disturbed. See below for 3 additional bearing trees and updated ties to the recovered references.

(c)(d)(e) PLAN VIEW OF CORNER WITH TIES TO AT LEAST 4 WITNESS MONUMENTS. IF IN DISAGREEMENT WITH PREVIOUSLY ESTABLISHED CORNER, SHOW THE DISTANCE BETWEEN THE TWO CORNERS AND ALSO INDICATE THE TIES TO THE DISPUTED CORNER.



(i) I, JAMES D. REIN, PROFESSIONAL LAND SURVEYOR NO. S-1234 HEREBY CERTIFY THAT THE CORNER LOCATION ON THIS RECORD WAS DETERMINED BY ME OR UNDER MY DIRECTION AND CONTROL AND THAT THIS U.S. PUBLIC LAND SURVEY MONUMENT RECORD IS CORRECT AND COMPLETE TO THE BEST OF MY KNOWLEDGE AND BELIEF.



James D. Rein
SIGNATURE
3/09/26
DATE

INDEX NO. J-19
3904110020