

At \_\_\_\_\_ O'Clock \_\_\_\_\_ M  
**THOMAS H. LEIGHTON**  
REGISTER OF DEEDS

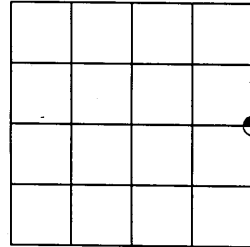
**U.S. PUBLIC LAND SURVEY MONUMENT RECORD**

Note: This form is intended and designed to fulfill all requirements of the Wisconsin Administrative Code, Chapter A-E 7.08 U.S. Public Land Monument Record (3)(a)(b)(c)(d)(e)(f)(g)(h)(i). An additional sheet may be added if necessary to conform with said requirements.

(a) CORNER LOCATION:

East 1/4 corner of Section 11  
Township 39 North  
Range 4 East  
Town of Minocqua  
County of Oneida

ONEIDA COUNTY  
GRID COORDINATES  
North: 254139.67  
East: 128542.13  
Control Station: Vilas County 310S  
Latitude: 45-55-08.39995  
Longitude: 89-59-22.41041  
Datum: NAD 83 (1991) Method: RTK



SECTION 11

(b) HISTORY OF ORIGINAL CORNER ESTABLISHMENT

Original Surveyor: Alexander Anderson  
Date of Survey: Commenced May 9, 1865  
Completed May 22, 1865

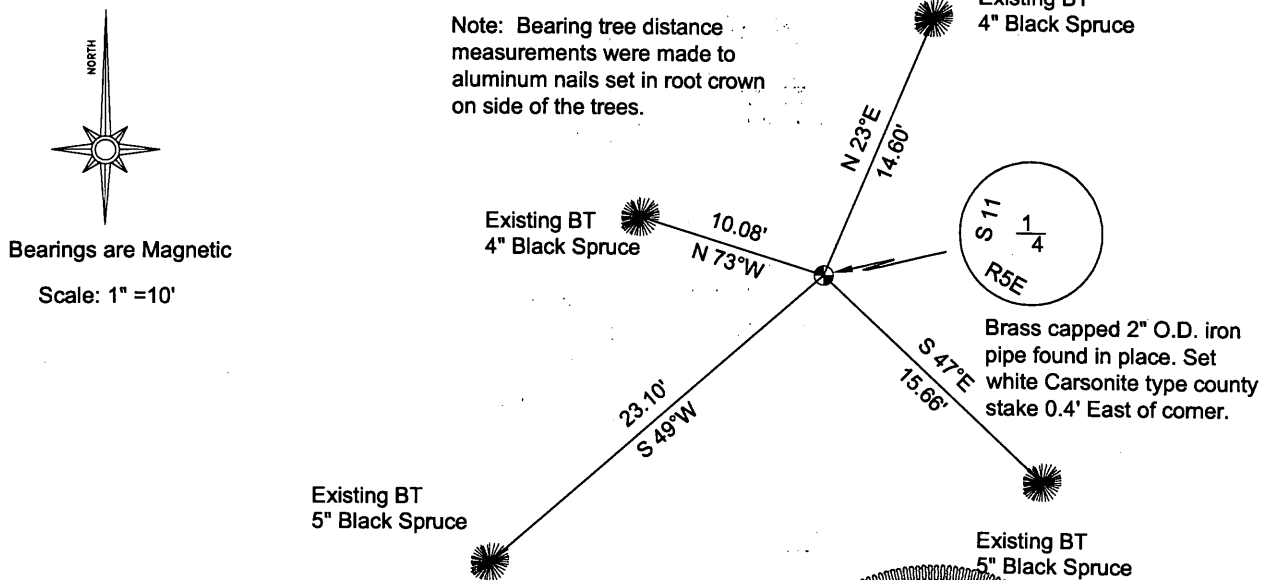
Original B.T.'S: 6" Tamarac, N74°W, 14 links  
6" Spruce, S84°E, 11 links

(f)(g)(h) DESCRIPTION OF MONUMENT FOUND AT THIS CORNER AND IF IT WAS ACCEPTED, STATE ALL EVIDENCE (MATERIAL, TESTIMONIAL, OCCUPATIONS, PLATS, RECORDS, OTHER MONUMENTS) USED AS A BASIS FOR ESTABLISHING LOCATION. IF NOT ACCEPTED OF IF NOTHING WAS FOUND, STATE EVIDENCE USED AS BASIS FOR ESTABLISHING LOCATION. IF REESTABLISHED THROUGH LOST CORNER PROPORTIONATE METHODS, INDICATE ALL MONUMENTS, DISTANCES AND DIRECTIONS USED TO ESTABLISH. INDICATE TYPE OF MONUMENT AND SIGN POST FOUND OR SET.

February 1, 1962: NEPCO survey in Section 12, mapped by W. H. Stuth, legends corner as being monumented by a brass capped iron pipe. Map states that is was a "Transit & Chain Survey, using corners found" and does not reference any bearing trees.

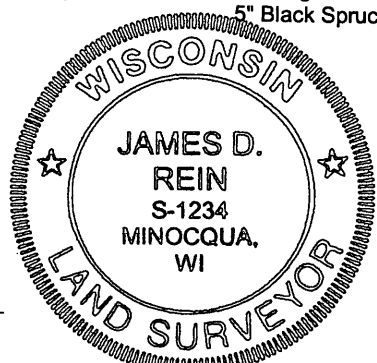
May 12, 2003: James D. Rein, Registered Land Surveyor No. S-1234, recovered a brass capped 2" outside diameter iron pipe extending 14" above ground level. The corner was referenced by a 4" square Cedar post 1 foot West of the monument and existing bearing trees as shown in the plan view.

(c)(d)(e) PLAN VIEW OF CORNER WITH TIES TO AT LEAST 4 WITNESS MONUMENTS. IF IN DISAGREEMENT WITH PREVIOUSLY ESTABLISHED CORNER, SHOW THE DISTANCE BETWEEN THE TWO CORNERS AND ALSO INDICATE THE TIES TO THE DISPUTED CORNER.



(i) I, JAMES D. REIN, REGISTERED LAND SURVEYOR NO. S-1234 HEREBY CERTIFY THAT THE CORNER LOCATION ON THIS RECORD WAS DETERMINED BY ME OR UNDER MY DIRECTION AND CONTROL AND THAT THIS U.S. PUBLIC LAND SURVEY MONUMENT RECORD IS CORRECT AND COMPLETE TO THE BEST OF MY KNOWLEDGE AND BELIEF.

*[Signature]*  
SIGNATURE  
3/11/04  
DATE



INDEX NO. 6-21  
3904112000