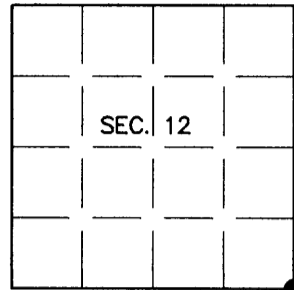


U.S. PUBLIC LAND SURVEY MONUMENT RECORD

Note: This form is intended and designed to fulfill all requirements of Wisconsin Administrative Code, Chapter A-E 7.08 U.S. Public Land Survey Monument Record (3)(a)(b)(c)(d)(e)(f)(g)(h)(i). An additional sheet may be added if necessary to conform with said requirements.

(a) CORNER LOCATION: Plane Coordinates
 Cor. of Secs. 7, 12, 13 & 18 X:
 Township 39 North Y:
 Range 4 & 5 East of the 4th P.M. Datum:
 Town of Minocqua County of Oneida



(b) HISTORY OF ORIGINAL CORNER ESTABLISHMENT

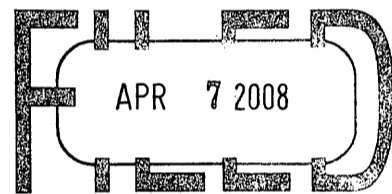
Original Surveyor: Alfred Millard Original Accessories:
 Date of Survey: Commenced Sept., 1860 Y. Pine 18" N36°W, 18 lks.
 Completed Sept., 1860 Hemlock 12" N5°E, 24 lks.
Y. Birch 10" S70°E, 20 lks.
W. Pine 15" S43°W, 72 lks.

(b)(f)(g)(h) Description of monument found at this corner and if it was accepted, state all evidence (material, testimonial, occupational, plats, records, other monuments) used as a basis for accepting. If not accepted or if nothing was found, state evidence used as basis for establishing location. If re-established through lost corner proportionate methods, indicate all monuments, distances and directions used to establish. Indicate type of monument and sign post found or set.

NOTE: This is a perpetuation of a previous USPLS Monument Record by Charles E. Winkler, RLS dated January 25, 1990 and filed in the office of the Oneida County Register of Deeds. A complete history of the corner can be found on the previous monument record. I accept the previous location as a true and faithful perpetuation or reestablishment of the original corner location and further perpetuate it as follows.

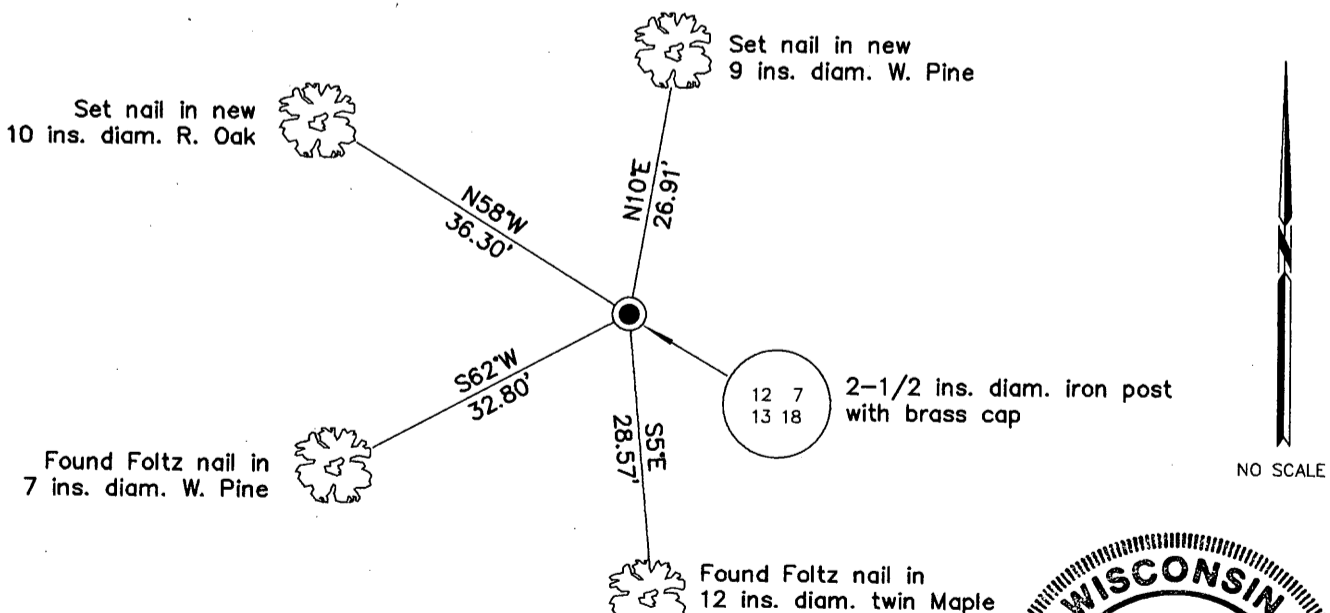
12 September 2005: I found and accepted a 2-1/2 ins. diam. iron post with brass cap projecting 24 ins. above the ground. I found Winkler's birch and NW pine standing dead. I found or established accessories as shown below and found a white plastic sign post bearing North, 1 ft. dist.

REGISTER OF DEEDS OFFICE
ONEIDA COUNTY, WIS.

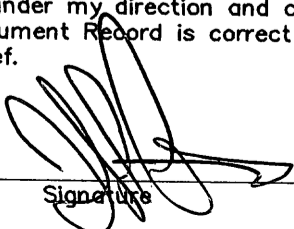


At _____ O'Clock _____ M
THOMAS H. LEIGHTON
REGISTER OF DEEDS

(c)(d)(e) Plan view of corner with ties to at least 4 witness monuments. If in disagreement with previously established corner, show the distances between the two corners and also indicate the ties to the disputed.



(i) I, Jeffrey W. Austin, Registered Land Surveyor No. S-1885, hereby certify upon honor that the corner location on this record was determined by me or under my direction and control and that this U.S. Public Land Survey Monument Record is correct and complete to the best of my knowledge and belief.


Signature

MAR. 3, 2008
Date



INDEX NO. J-25 (3904120000)